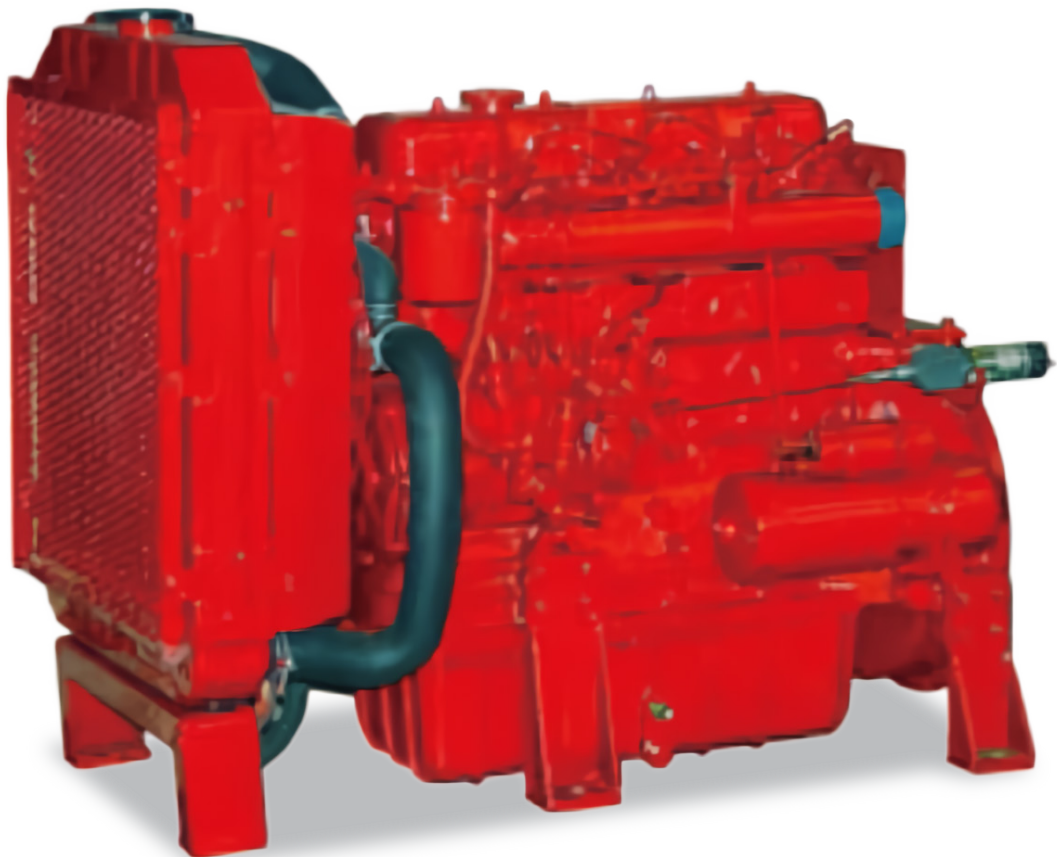
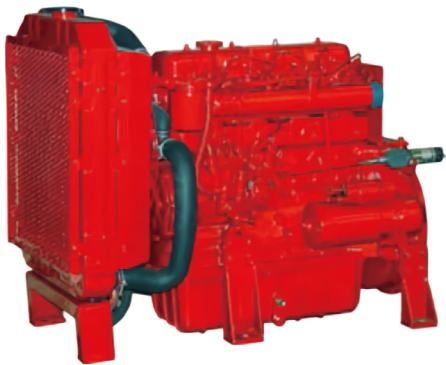


Download from, mepbali.net
GuardALL[®]
Guard for ALL

FIRE PUMP ENGINE



RELIABLE FIRE PUMP ENGINE



The GuardALL Fire Pump Engine plays an important role in the Fire Pump Package as it drives the diesel pumps in main standby operation, that arranged to allow power take-off via flexible specifications directly from the engine rotation elements. Where this power is designed to allow the necessary work space to service the fire pump when connected directly to the engine. The GuardALL Fire Pump Engine can be matched with a variety of fire pumps to suit protection needs.

ITEM	UNIT	SPECIFICATION
Engine Model		
Type		Vertical, water-cooled, 4-cycle diesel engine
Number of cylinder		4
Cylinder Bore	mm	93
Stroke	mm	105
Combustion Type		Omega Type
Total Displacement	L	2.85
Brake Horse Power (Stand-by)	kW/rpm (PS/rpm)	55/3000(75/3000)
Brake Horse Power (Continuous)	kW/rpm (PS/rpm)	50/3000(68/3000)
Firing Order		1-3-4-2
Direction of Rotation		Counter-Clockwise (Viewed from Flywheel Side)
Injection Pump		Mechanical Type
Fuel Injection Pressure	MPa (kgf/cm ²)	22 (215)
Fuel Injection Timing	deg.	20 Before T.D.C (p)
Compression Ratio		17.5
Fuel Oil		Diesel Fuel No.2-D(ASTM D975)
Starter Output	V-kW	12 – 3.5
Alternator Output	V - A	14 - 36

ITEM	UNIT	SPECIFICATION
Cooling System		Pressurized Radiator, Forced Circulation with water pump
Lubricating System		Forced Lubricating by Trochoid Pump
Lubrication Oil		Class CD lubricating oil as per API classification is recommended
Lub.Oil Capacity	L	5.5
Dimensions (L x W x H)	mm	765x520x720
Emission Regulation		China Off Road Stage II
Intake Resistance	kPa(mmAq)	≤ 2.2 (234)
Back Pressure	kPa(mmHg)	≤ 6.4(49)
Ho(Heat Rejection to coolant)	kcal/h	22000
Combustion Air Requirements (25°C and 750mmHg)	m ³ /min	3.8
Exhaust Gas Volume (25°C and 750mmHg)	m ³ /min	5.5
Dry Weight	kg	230

※ Lubrication Oil is not filled for engine delivery.

PART NAME	Q'ty	DESCRIPTION
Crank Case Comp.	1	
Oil Pan Comp.	1	Depth 145mm
Gear Case,Assy	1	Oil Filter Cartridge : Inlet Side
Water Pump Assy.	1	
Inlet Manifold	1	Horizontal and back Inlet (Closed Breather Type)
Exhaust Manifold	1	Horizontal Outlet
Head Cover Assy.	1	Closed Breather Type
Flywheel	1	SAE 7-1/2
Flywheel Housing Assy	1	SAE4
Flywheel ring gear	1	109
Oil Filter Cartridge	1	
Oil Gauge	1	Inlet side
Oil Gauge Guide	1	

PART NAME	Q'ty	DESCRIPTION
Injection Pump Assy	1	
Nozzle Holder Assy	4	
Starter	1	12V – 3.5kW
Alternator	1	12V - 36A
Water Flange	1	Rc1/4"
Thermostat cover	1	Upward Outlet
Fan Spacer	1	40mm
Fan	1	Φ420mm 7 blades, Pusher
Fan Pulley	1	Φ115mm
Fan Drive Pulley	1	Φ160mm
Fan Belt	1	15×1036Li
Oil Pressure Switch	1	0.5kgf/cm2
Water Temp. Sensor	1	100°C

Download from, mepbali.net

GuardALL[®]
Guard for ALL

guardall.co.id