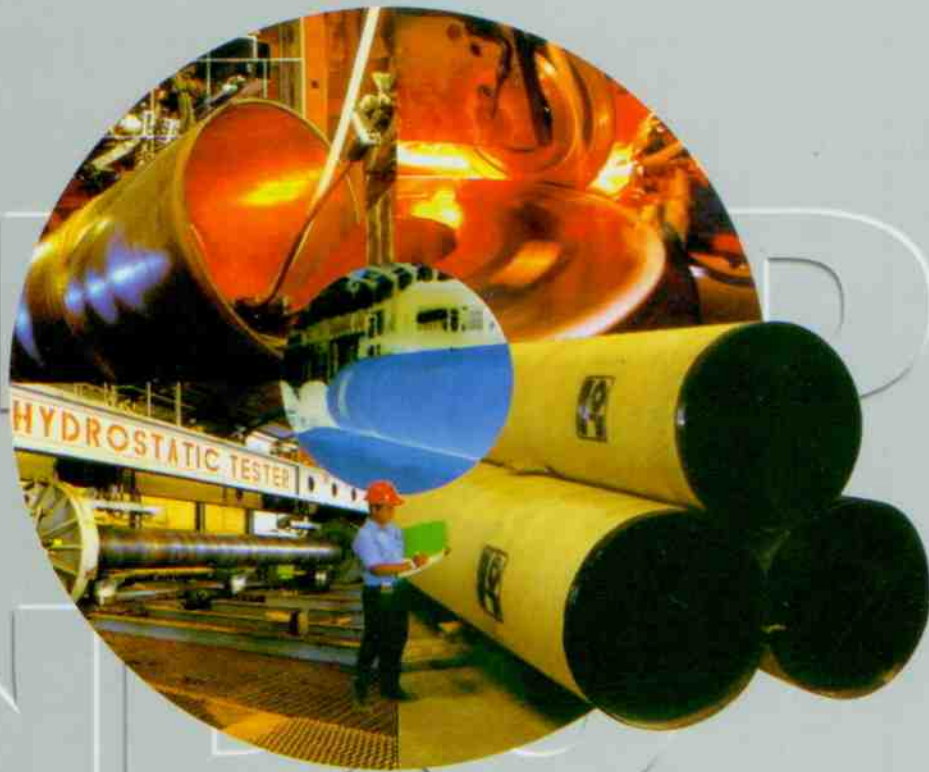




PT. STEEL PIPE INDUSTRY OF INDONESIA



**PIPA BAJA KARBON**  
(Carbon Steel Pipe)  
BS 1387 - 67; SNI 07 - 0039 - 87 / SII 0161 - 81

KELAS	UKURAN				Tebal	Berat		Banyaknya Ulir per Inchi
	Diameter Nominal		Diameter Luar			Ujung polos	Berulir bersoket	
			maks.	min.				
	Inchi	mm	mm	mm		kg/m	kg/m	
RINGAN	1/2	15	21.4	21.0	2.0	0.947	0.956	14
	3/4	20	26.9	26.4	2.35	1.38	1.39	14
	1	25	33.8	33.2	2.65	1.98	2.0	11
	1 1/4	32	42.5	41.9	2.65	2.54	2.57	11
	1 1/2	40	48.4	47.8	2.9	3.23	3.27	11
	2	50	60.2	59.6	2.9	4.08	4.15	11
	2 1/2	65	76.0	75.2	3.25	5.71	5.83	11
	3	80	88.7	87.9	3.25	6.72	6.89	11
4	100	113.9	113.0	3.65	9.75	10.0	11	

MEDIUM	1/2	15	21.7	21.1	2.6	1.21	1.22	14
	3/4	20	27.2	26.6	2.6	1.56	1.57	14
	1	25	34.2	33.4	3.2	2.41	2.43	11
	1 1/4	32	42.9	42.1	3.2	3.10	3.13	11
	1 1/2	40	48.8	48.0	3.2	3.57	3.61	11
	2	50	60.8	59.8	3.6	5.03	5.10	11
	2 1/2	65	76.6	75.4	3.6	6.43	6.55	11
	3	80	89.5	88.1	4.0	8.37	8.54	11
	4	100	114.9	113.33	4.5	12.2	12.5	11
	5	125	140.6	138.7	4.85	16.6	17.1	11
6	150	166.1	164.1	4.85	19.7	20.3	11	

BERAT	1/2	15	21.7	21.1	3.2	1.44	1.45	14
	3/4	20	27.2	26.6	3.2	1.87	1.88	14
	1	25	34.2	33.4	4.0	2.94	2.96	11
	1 1/4	32	42.9	42.1	4.0	3.80	3.83	11
	1 1/2	40	48.8	48.0	4.0	4.38	4.42	11
	2	50	60.8	59.8	4.5	6.19	6.26	11
	2 1/2	65	76.6	75.4	4.5	7.93	8.05	11
	3	80	89.5	88.1	4.85	10.3	10.5	11
	4	100	114.9	113.33	5.4	14.5	14.8	11
	5	125	140.6	138.7	5.4	17.9	18.4	11
6	150	166.1	164.1	5.4	21.3	21.9	11	

**KETERANGAN :**

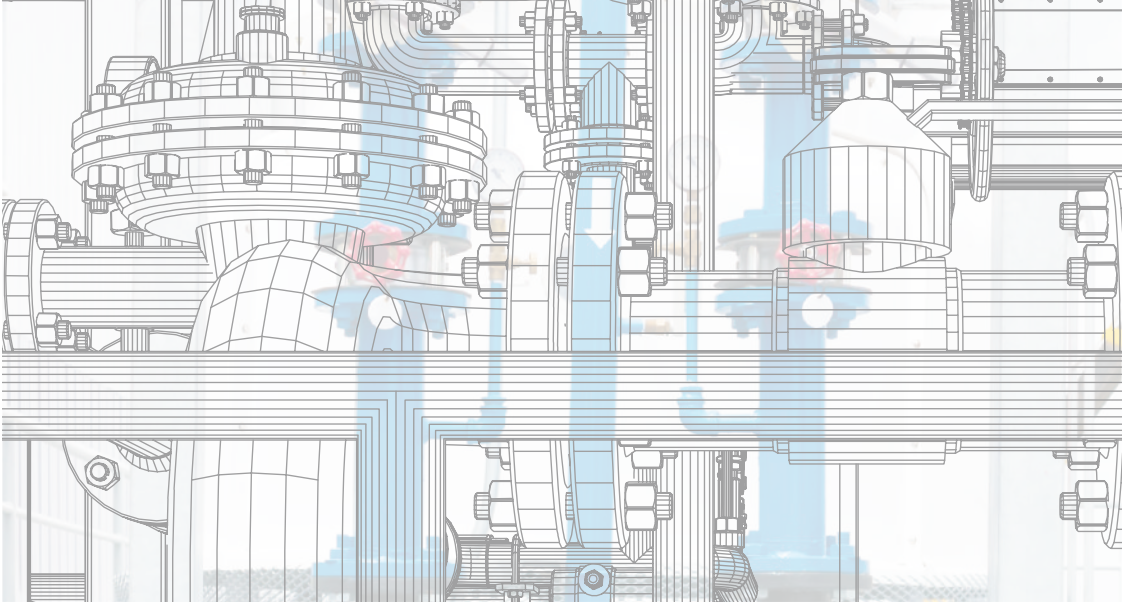
1. Toleransi Diameter :  $\pm 1\%$
2. Toleransi Tebal : + tidak ditentukan / -10% (BS 1387 /85)
3. Panjang : 6 m / pipa, atau sesuai permintaan
4. Lapisan : Galvanis dan polos

**PIPA BAJA KARBON**  
 ( Carbon Steel Pipe )  
 ASTM A 53 Grade A  
 ASTM A 120

Diameter Nominal	Diameter Luar		Tebal		Berat		
	Inci	mm	Inci	mm	Ujung Polos (kg/m)	Sch	Berulir Bersoket (kg/m)
1/2	0.840	21.3	0.109	2.77	1.27	40	1.27
			0.147	3.73	1.62	80	1.62
3/4	1.050	26.7	0.113	2.87	1.68	40	1.68
			0.154	3.73	1.62	80	1.62
1	1.315	33.4	0.133	3.38	2.50	40	1.68
			0.179	4.55	3.23	80	3.25
1 1/4	1.660	42.2	0.140	3.56	3.38	40	3.40
			0.191	4.85	4.47	80	4.50
1 1/2	1.900	48.3	0.145	3.68	4.05	40	4.06
			0.200	5.08	5.41	80	5.45
2	2.375	60.3	0.154	3.91	5.44	40	5.48
			0.218	5.54	7.48	80	7.55
2 1/2	2.875	73.0	0.203	5.16	8.62	40	8.68
			0.276	7.01	11.41	80	5.45
3	3.500	88.9	0.216	5.49	11.29	40	11.35
			0.300	7.52	15.27	80	15.39
4	4.500	114.3	0.237	6.02	16.07	40	16.22
			0.337	8.56	22.32	80	22.60
5	5.563	141.3	0.258	6.55	21.78	40	22.07
6	6.625	168.3	0.280	7.11	28.26	40	28.58
8	8.625	219.1	0.277	7.04	36.79	30	38.07
			0.322	8.18	42.53	40	43.73

**KETERANGAN :**

1. Toleransi Diameter :  $\pm 1\%$
2. Toleransi Tebal : + tidak ditentukan / -10% (BS 1387 /85)
3. Panjang : 6 m / pipa, atau sesuai permintaan



**SSAW & HFW | ERW**

Spiral Submerged Arc Welded  
High Frequency Welded |  
Electric Resistance Welded

# Water Pipes



PT Steel Pipe Industry of Indonesia, Tbk.



SPINDO®'s high quality pipe is used in a wide variety of applications including water and sewage transmission. Greater strength in proportion to wall thickness of any competitive product means the pipe performs safely at higher pressures and its strength provides distinct handling and laying advantages in difficult locations.

Industrial Standards

**SNI 0039 | ASTM A53 | AWWA C200 | AWWA C208 | AS 1579**

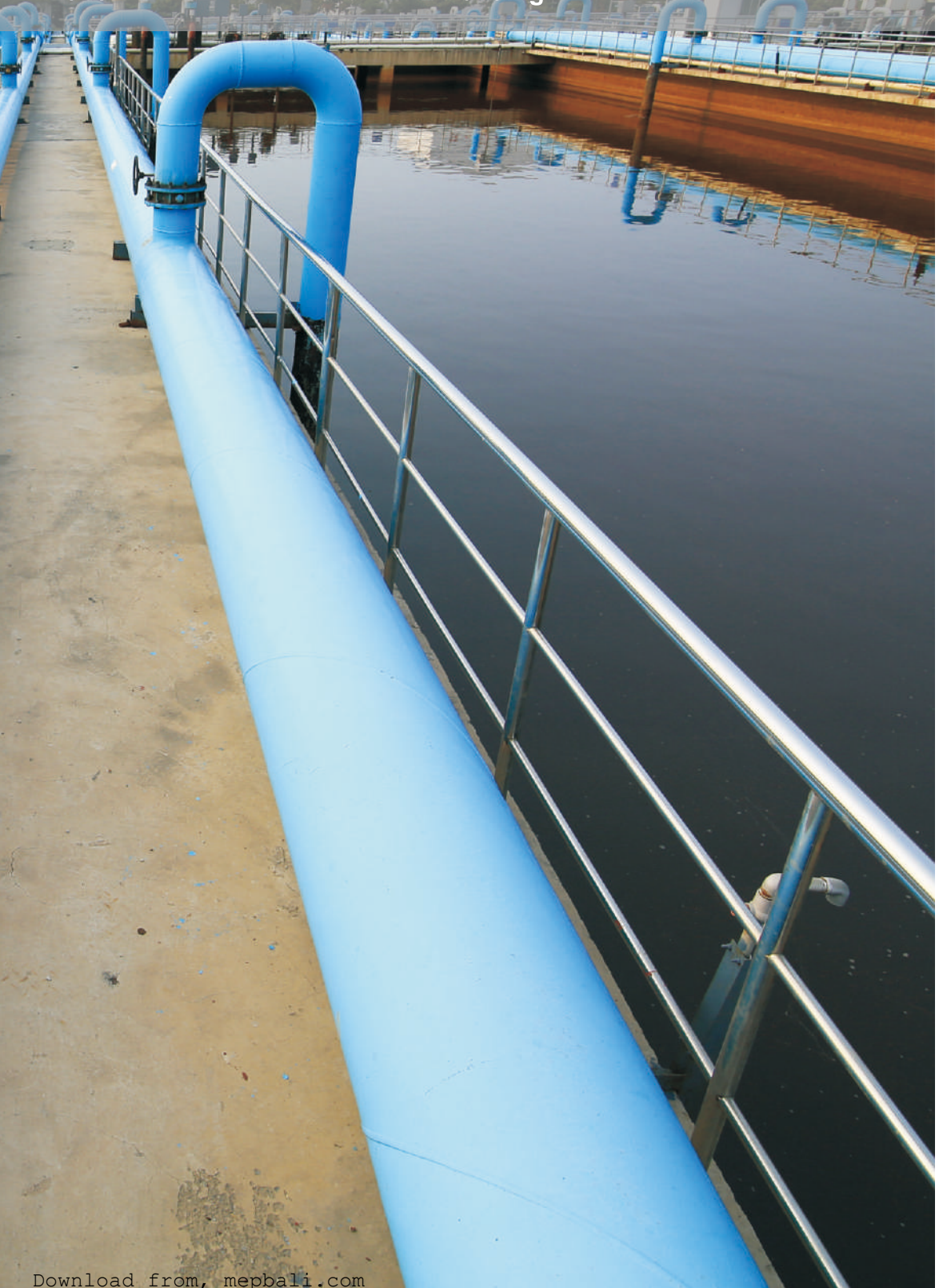




Water Treatment  
**Plant**



Water Transmission  
**Building**





# HFW | ERW Water Pipes

Range of Diameter	½" - 12"
Range of Wall Thickness	2.00 mm - 10.30 mm
Classification	Light/Medium/Heavy - <b>SNI 0039 Standard</b> Grade A/Grade B - <b>ASTM A53 Standard</b>

## HFW | ERW Water Pipes

Electric Resistance Welded (ERW) or High Frequency Welding (HFW) steel pipes is based on welding in flat sheet rolled into a tube. Through its proven coating process, SPINDO® steel water pipe fulfill various industrial standard.

These steel pipes are mainly used for water transmission pipelines, water treatment plants, wastewater treatment plants, cogeneration facilities & circulating water systems in the building.

Download from, [mepbali.com](http://mepbali.com)

Pengelasan elektrik (ERW) atau pengelasan elektrik frekwensi tinggi (HFW) untuk pipa baja mengacu pada pengelasan pada lembaran yang digulung menjadi bentuk tabung. Melalui proses pelapisan yang telah teruji, pipa baja SPINDO® memenuhi berbagai standar kelayakan penggunaannya sebagai pipa air.

Penggunaan pipa baja ini terutama untuk jaringan pipa air transmisi, pabrik pengolahan air, pabrik pengolahan air limbah, fasilitas penggunaan tenaga air dan sistem sirkulasi air pada bangunan.

# SSAW Water Pipes

Range of Diameter	6" - 80"
Range of Wall Thickness	4.10 mm - 25.40 mm
Classification	Light/Medium/Heavy - <b>SNI 0039 Standard</b> <b>AWWA C200, AWWA C208, AS 1579</b>

## SSAW Water Pipes

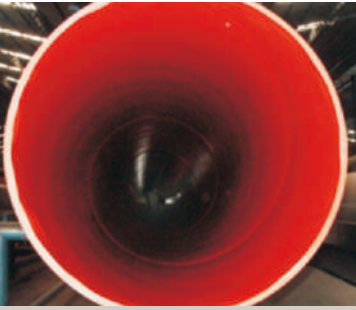
Spiral Submerged Arc Welding (SSAW) steel pipes is a forming tube process of rolled steel sheet with centerline hose reel molding angle (adjustable), side molding edge welding and weld them into a spiral.

These steel pipes are used for large diameter of water distribution, such as water tunnel, water treatment plants, wastewater treatment plants, etc

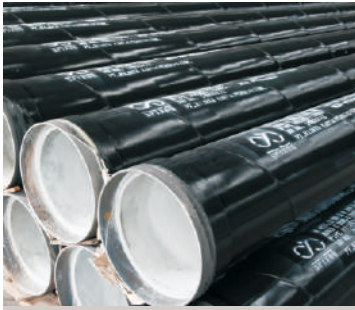
Pengelasan spiral pada pipa baja (SSAW) adalah pembentukan tabung dengan proses menggulung lembaran baja dengan sudut tertentu mengacu pada garis pusat, sisi tepi lembaran dilas mengikuti alur spiral yang telah ditentukan.

Pipa baja ini digunakan untuk distribusi air dengan diameter besar, seperti pada terowongan air, pabrik pengolahan air, pabrik pengolahan air limbah, dan sebagainya.

## Internal Coating

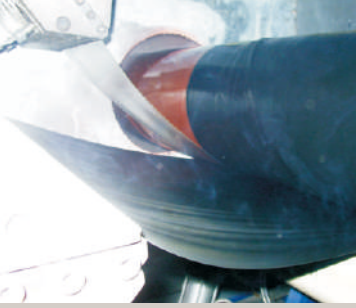


Internal Epoxy Coating



Cement Mortar Lining

## External Coating



Three Layer Polyethylene (3LPE)



Three Layer Polypropylene (3LPP)



Fusion Bond Epoxy Coating (FBE)



External Epoxy Coating

## Galvanized



Application **Underground Water Pipelines**





## PT ADIMAS ISOLASITAMA

AUTHORIZED DISTRIBUTOR

INSULATION, BUILDING, AIRCON & INDUSTRIAL INSTALLATION MATERIALS

Jl. Pangeran Jayakarta 131 - A / 11, Jakarta 10730 - INDONESIA

Telp. (021) 6257888 (H), 6397888 (H) Fax. (021) 6258836 - 6393079

WA Customer Care : 081213157888 (H)

website : [www.adimas.co.id](http://www.adimas.co.id)

Email : [info@adimas.co.id](mailto:info@adimas.co.id)

### PT STEEL PIPE INDUSTRY OF INDONESIA, Tbk.

#### Headquarter

##### SPINDO Surabaya Office

Jl. Kalibutih No. 189 -191,  
Surabaya 60173, East Java, Indonesia  
p : +6231 532 0921, 531 6921,  
+6231 532 0320, 535 3290,  
f : +6231 531 0712, 532 0290,  
e : [marketing@spindo.co.id](mailto:marketing@spindo.co.id)

##### SPINDO Jakarta Office

Gedung Baja, Lt. 7  
Jl. Pangeran Jayakarta No. 55  
Jakarta 10730, Indonesia  
p : +6221 6231 3502  
f : +6221 624 0313  
e : [marketing.sjo@spindo.co.id](mailto:marketing.sjo@spindo.co.id)



[www.spindo.com](http://www.spindo.com)

