

The Cisco logo is displayed in a bold, blue, italicized sans-serif font. It features a registered trademark symbol (®) at the top right of the word. The background of the entire page is a black and white photograph of a server rack's perforated metal mesh, with a close-up of a sliding door handle on the right side.

CISCO[®]

Cisco rack system has provides a wide variety of server rack, Server Cabinets, Wall Mounts, Cooling Solutions, and Server Rack Accessories for the Datacom and Telco industries.

www.ampnet-online.com
www.cisco-international.com

FABRICATION MACHINERY

With the expertise and fabrication machinery we have developed over time, we offer a range of variety RACK SYSTEM products of DATA CENTER and support components.



Laser Cutting Machine



CMM Test Machine



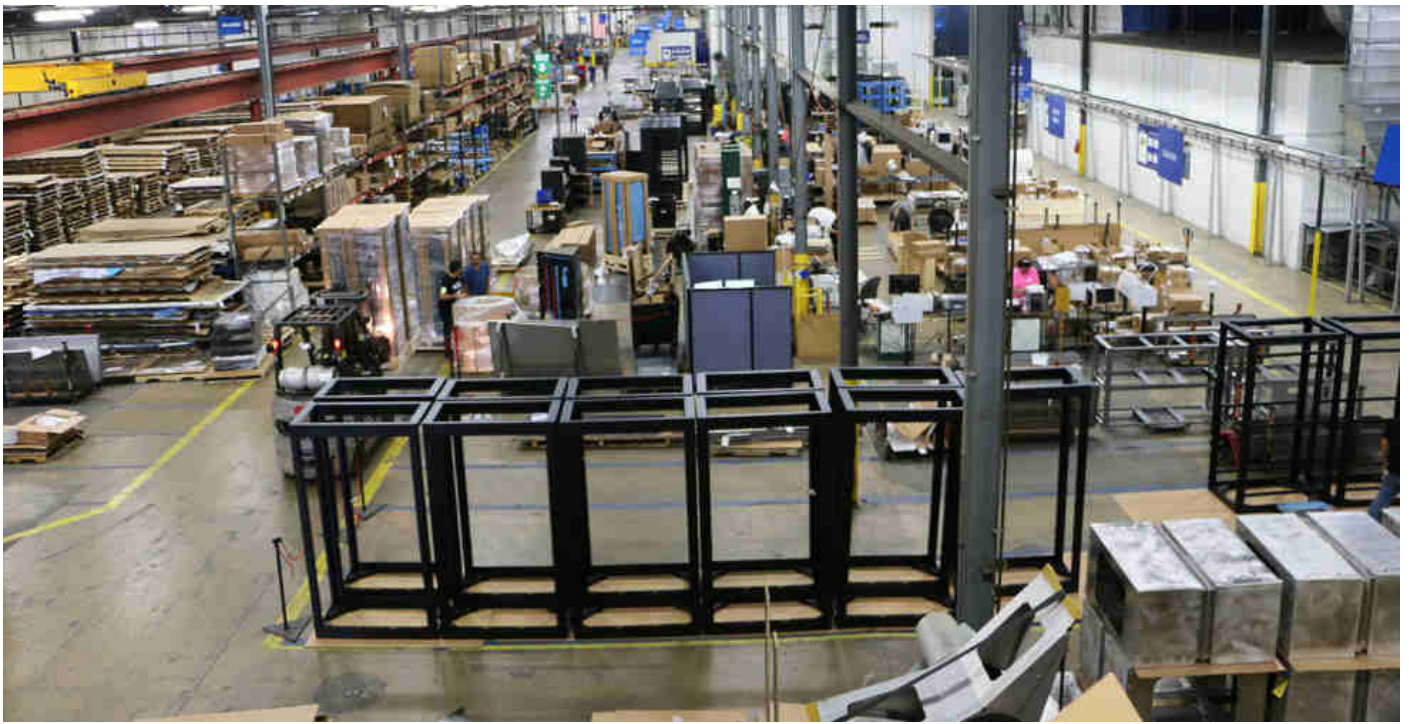
Salt spray corrosion test chamber



Robot Welding Manipulator

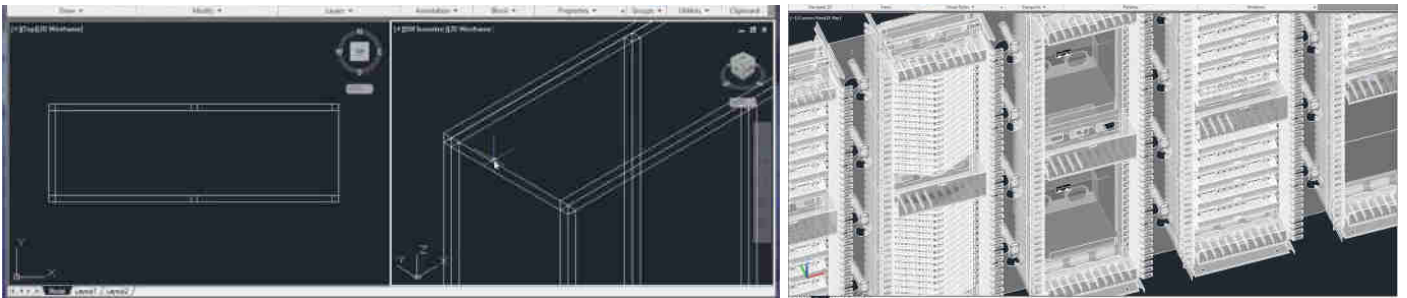


High Velocity Ram Machine



CISCO RACK SYSTEM is an industry leader in providing the ICT Racking solutions and is committed to the modular data center integrated solutions as well as the product development, production, sales, consultation, design, implementation, operation and maintenance services. With its own brand of system products, including the cold aisle containment systems, fast-termination structured cabling systems, intelligent power supply and distribution systems, cooling systems and integrated management platform systems.

RESEARCH & DEVELOPMENT



AMPNET independently researched and developed mini smart data center with integrated and combined cabinets are with advantages of environmental protection, high efficiency, energy saving and many other advantages, which completely changed the state of traditional mini machine rooms. The company actively explores the Indonesia market, and cooperates with the major international operators and the upstream and downstream industry chain companies of data centers to complete global promotion of independent brands. Taking technological innovation as the engine, market as the orientation and meeting the needs of customers as the goal, the company focuses on the technology field of data centers to promote the high integration, upgrade and transformation of data center industries and create a good operation environment of big data.

PRODUCT DESCRIPTION

CISCO CS Series is a high quality server rack specifically designed to maximize the placement and maintenance of IT network devices. This server rack is equipped with air circulation system so that it can optimize the performance of electronic devices in it to work optimally. This server rack is very suitable to be applied for IDC (International Data Corporation) or Data Center of a company



DOUBLE INTERLOCKING SIDE DOOR



EQUIPMENT HEIGHT MEASUREMENT (U-MARK)



2 INSTALLED AND 2 OPTIONAL FAN



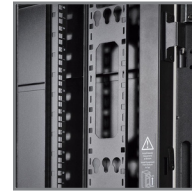
2 DIRECTION DOOR OPEN



HEAVY DUTY CASTOR



GROUNDING CONNECTOR



VERTICAL CABLE MANAGEMENT



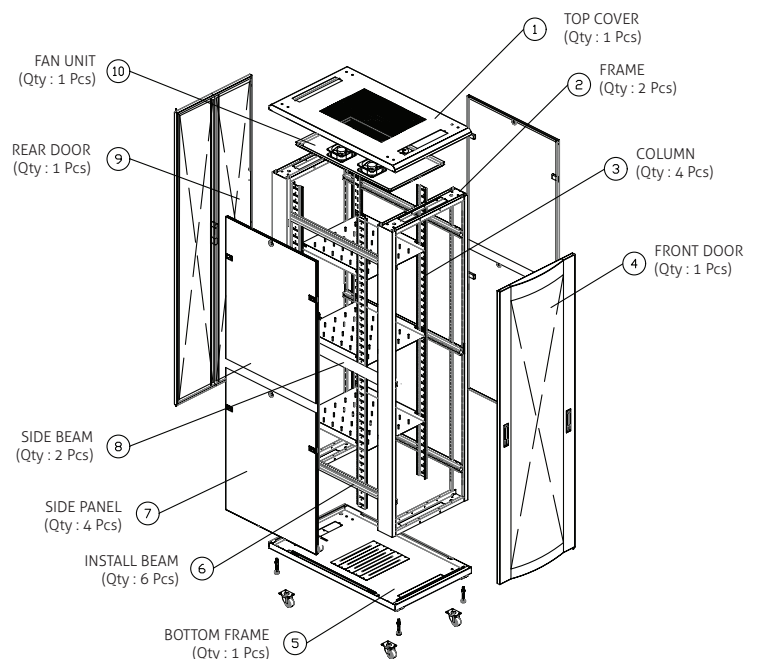
TOP AND BOTTOM CABLE ENTRY

MODEL

Part No.	Capacity	Width(mm)	Depth(mm)	Height(mm)
CS32-612-BLK	32U	600	1200	1600
CS42-608-BLK	42U	600	800	2000
CS42-612-BLK	42U	600	1200	2000
007-CSSE-81142-001	42U	800	1200	2000
007-CSSE-81145-001	45U	800	1200	2133

FEATURES

- Mounting cabinet structure static load bearing 1500 KG
- Front rear high density mesh perforated door, enhance airflow, reduce cabinet power consumption• Sectionalside door with interlocks could open independently easy for maintenance
- Sectional type side door(with interlock), open separately, easy for maintenance
- Top side tool-less installation, easy for dismounting and maintenance
- Cabinet active component and frame earth connection
- Cabinet surface adopted static painting treatment, adapt all kinds of environment





PRODUCT DESCRIPTION

CISCO CW series is a standard 19 inch professional wall mounted cabinet which has abundant functions and flexible operation. It could provide proper and stable environment for small equipments, widely used in structured cabling and intelligent buildings.



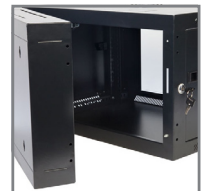
LOCKING GLASS FRONT DOOR



REMOVEABLE SIDE PANEL



ADJUSTABLE STRIP



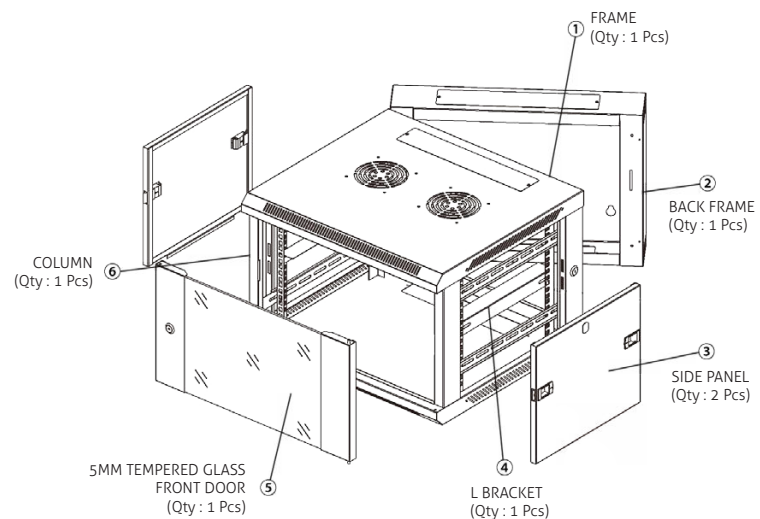
LOCKING SOLID REAR DOOR

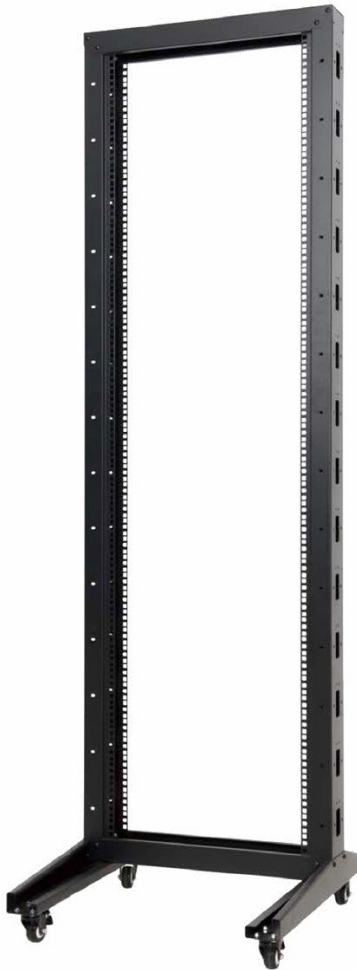
MODEL

Part No.	Capacity	Width(mm)	Depth(mm)	Height(mm)
CW09-606-BLK	9U	600	600	502
CW12-606-BLK	12U	600	600	635
CW15-606-BLK	15U	600	600	768

FEATURES

- Standard 19" wall mounting cabinet overall welding structure, static load bearing 60kg
- Accessible rear section, easy for rear cabling and daily maintenance
- Quick and convenient wall mounted installation design, support feet or truckles optional for ground installing
- Accessible side panel, convenient operation
- Top rear side has cabling channel, support wiring and structured cabling
- With U mark installation column, adjustable sign, column accurate adjustment





PRODUCT DESCRIPTION

CO series is a standard 19inch flexible single column rack, which could satisfy the use of Easy Installation, Easy Maintenance, Easy Organization, Unrestricted Air Flow and Lower Cost.



COLUMN
INSTALLATION



EQUIPMENT HEIGHT
MEASUREMENT (U-MARK)



HEAVY DUTY CASTOR



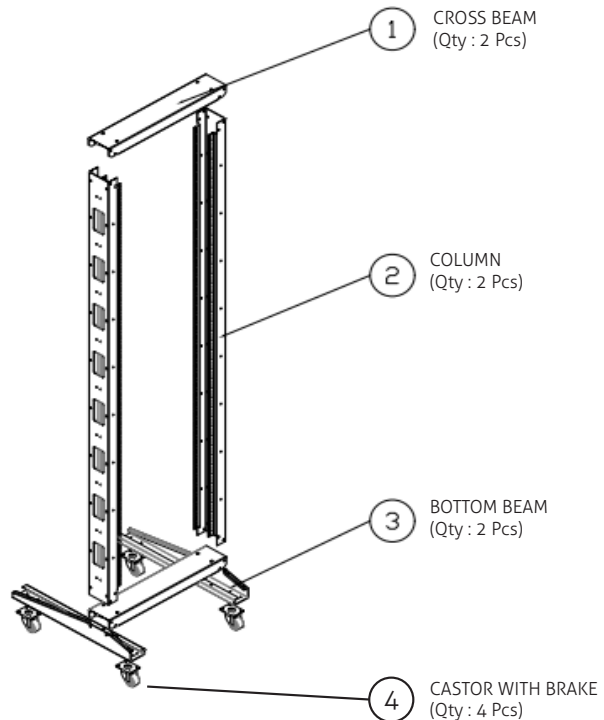
6 PORT HORIZONTAL
POWER DISTRIBUTION
UNIT

MODEL

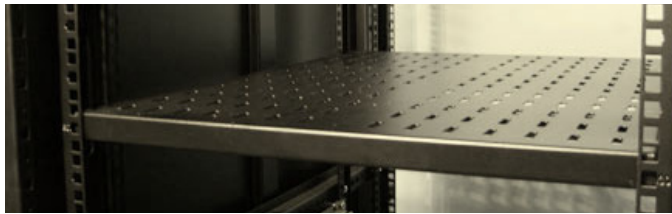
Part No.	Capacity	Width(mm)	Depth(mm)	Height(mm)
CO32-606-BLK	32U	600	600	1625
CO42-606-BLK	42U	600	600	2070

FEATURES

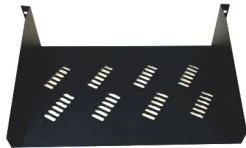
- Standard 19" rack, assembled structure, static load bearing 160KG.
- Quick and convenient installation design.
- With brake type truckles, moving flexible, safe and reliable.
- With U mark installation column, with adjustable sign, column accurate adjustment.



RACK SHELVES



Server rack shelves have been specifically designed to fit in 19" server cabinets. The racks are easily adjustable with some shelves vented to allow for airflow, helping to cool any equipment down that might be prone to over-heating. Heavy duty shelves are also available and are able to hold more weight than a cantilever shelf. A shelf is measured by using rack units (U or RU) and is defined as 44.5 mm (1.75 in).



Part No.	Desc.	Depth(mm)	Load(Kg)
CFS-735-BLK	Fixed-Shelf	350	70
CFS-755-BLK	Fixed-Shelf	550	70
CFS-775-BLK	Fixed-Shelf	750	70
CFS-1290-BLK	Fixed-Shelf	900	120



Part No.	Desc.	Depth(mm)	Load(Kg)
CSS-300-BLK	Sliding-Shelf	300	40
CSS-550-BLK	Sliding-Shelf	550	40

POWER DISTRIBUTION UNIT



A power distribution unit (PDU) or mains distribution unit (MDU) is a device fitted with multiple outputs designed to distribute electric power, especially to racks of computers and networking equipment located within a data center.



Part No.	Desc.	Port	Lenght (M)	ac Max.
CPD-0616-H220	Horizontal w/switch, German Standard	6	3	16A 220Vac
CPD-1216-V220	Vertical w/switch, German Standard	12	3	16A 220Vac
CPD-1220-V380	Vertical w/switch, Industrial Power Plug	12	3	20A 380Vac

CABLE MANAGEMENT



We offer a wide range of cable management solutions that make it easy to keep the cabling in your server rack tidy (Don't leave your cables hanging).



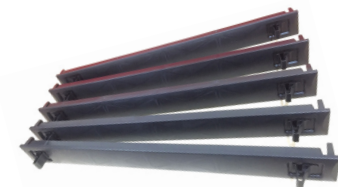
Part No.	Desc.	Dimension	Remark
CMM-1U-H	Plastic Cable Management with Cover	1U	19"
CCM-M1U-BLK	Metal Cable Management with Cover	1U	19"

PANEL



Snap-in Blank Panel

By installing snap-in blanking panels you can keep cool air from bypassing equipment and mixing with hot exhaust air, immediately improving cooling efficiencies for a modest investment.



Part No.	Desc.	Dimension	Remark
CBP-1U-H	Plastic Blank Panel	1U	19"

EXHAUST AIR COOLING FAN



Fan

Part No.	Desc.	Voltage	Dimension
CFU-ACDC-220	Fan	AC220V	120X120X38mm

Keeping your network equipment cool under controlled airflow is a necessity.



DTCT SMART RACK



Coded lock

Enclosed cabinet

Collector

Battery pack

Emergency cooling devices

Network patch panel



7 inch touch screen

Network switch

Server

RAM



Power distribution unit

UPS



AC



EN-A Single Cabinet



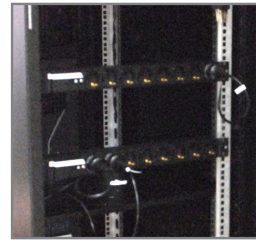
EN-C Single Cabinet

PRODUCT DESCRIPTION

CISCO Edge N green smart data room mini data center are safe, stable, reliable, flexible, and highly efficient. One integrated cabinet is a network data center, providing safe, reliable, intelligent management and energy-saving operation place and environment for information equipments.



DOOR EMBEDDED A/C



DUAL PDU OUTLET



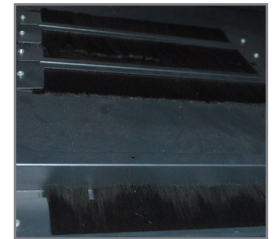
POWER SUPPLY MODULE



SMOKE DETECTOR



DIGITAL TEMP. DISPLAY



BRUSHED CABLE ENTRY

FEATURES

- Front door embedded cooling module, maximum cooling capacity 1kW (*)
- In-Row cooling module, maximum cooling capacity 1kW up to 2kW (**)
- Uninterruptible power supply module 1KVA/800W (*) up to 2KVA/1.6KW (**).
- Embedded DCIM host to realize remote centralized management of environment and infrastructure equipment in the cabinet, support SMS & Email alarm function, achieve 7x24 hours unattended (*)
- Intelligent management module: 7 inch intelligent touch screen realizes the local management of environment and infrastructure of the cabinet (*)

MODEL

Part No.	Capacity	Width(mm)	Depth(mm)	Height(mm)
*CEN-0101G1-1R6042E	39U	600	1000	2000
**CEN-0301G1-1R8842PE	42U	300+800	800	2000

Safe & Reliable

- The fully enclosed structure of the cabinet is isolated from the outside world
- Cabinet access control system with high level of protection
- Emergency ventilation, dynamic adjustment and optimization of airflow organization

Convergence & efficiency

- Innovatively integrated data center infrastructuresuch as power distribution unit, UPS, racktype AC, emergency cooling system, airflow management, cabling, and intelligent management system into one cabinet

Quick deployment

- Software and hardware integration, preinstallation, pre-tuning
- Reduce the difficulty of planning and implementing of the data center through standardized design

Simplified Operation

- Distributed deployment, unified management, unattended
- Support multiple ways of alarm for remote management





Single Cabinets-25U



Dual Cabinets-26U

PRODUCT DESCRIPTION

DCTC MicroD green smart data room mini data center series It provides you with precision cooling, UPSs, power management, monitoring and control technologies, and fire suppression all in an enclosed system. These systems are quick to deploy compared to conventional data center build, efficient to operate, built for flexibility, and easy to manage.



MINIATURE CIRCUIT BRAKER (MCB)



BATTERY PACK



DATA COLLECTOR



AIR CONDITIONER UNIT



UNINTERRUPTIBLE POWER SUPPLY (UPS)



CODE LOCK



7 INCH TOUCH SCREEN



SMOKE DETECTOR

FEATURES

- Integrated cabinet module: Fully enclosed, front door hollow tempered glass door, cabinet with hot and cold air circulation, built-in intelligent emergency air supply device, lightning system and local no-load sealed assembly
- refrigeration module: Supports maximum cooling capacity: 4kW
- Uninterruptible power supply module: 3KVA/2.4kW up to 20KVA/16kW
- supports remote centralized management, SMS, and Email alarm function, and achieves 7x24 hours unattended
- Backup time: Equip battery pack or lead-acid battery and battery box (rack) according to actual needs

MODEL

Part No.	Capacity	Width(mm)	Depth(mm)	Height(mm)
CMD-0304G1-1R6	25U	600	1280	2000
CMD-0604G1-2R6	65U	1200	1280	2000

Highly shielded

- Effectively suppress computer electromagnetic information leakage and prevent the influence of external strong electromagnetic interference
- Safe and reliable, the whole shielded structure isolating with the outside world

Green technology

- Consolidate data center infrastructure in single or multiple cabinets to reduce cooling path
- Optimize hot and cold airflow organization, precise cooling, and reduce PUE

Simplify operation and maintenance

- Distributed deployment, unified management, unattended
- Support multiple ways of alarm for remote management

Fast Deployment

- Software and hardware integration, factory pre-integrated and pre-tuning
- Fast delivery



PRODUCT DESCRIPTION

The DCTC CONTAINMENT data center is a new generation of data center deployment based on the cloudy computing. In order to cope with the trend of server development such as cloudy computing, virtualization, centralization, and high density, it adopts a modular design concept to minimize the coupling of infrastructure to the data center environment. Integrated subsystems such as power distribution, refrigeration, cabinets, airflow organization, fast termination cabling, and DCIM to improve the overall operational efficiency of the data center, enabling rapid deployment, flexible expansion, and green energy conservation. All of the infrastructure elements of the DCTC CONTAINMENT data center form a single, enclosed unit that is a complete modular data center, which can be quickly replicated to form a medium, large or super large data center.

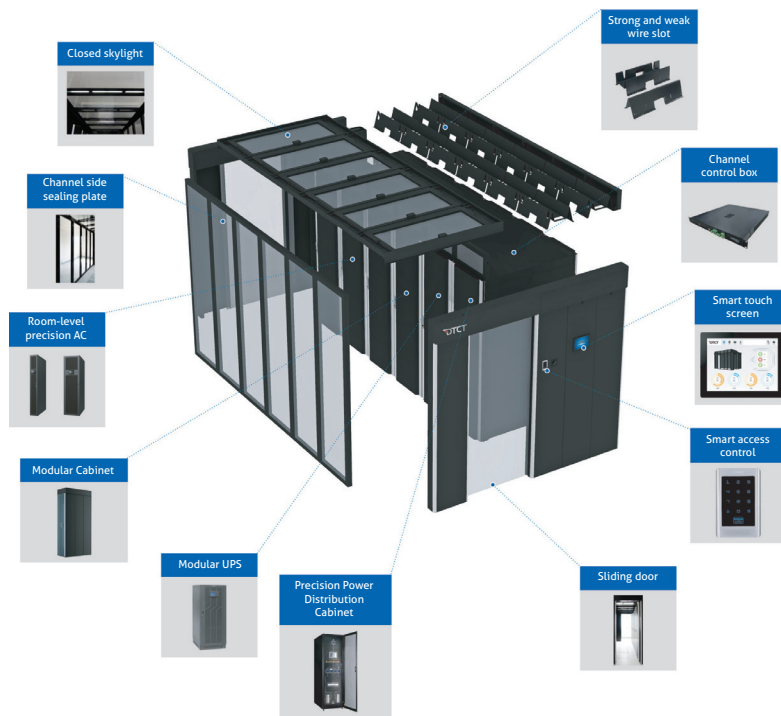
Single Row Modular Data Center Structural Scene



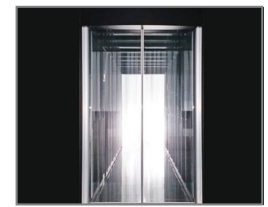
Dual Row Modular Data Center Structural Scene



STRUCTURE SCENE



SKYLIGHT ROOF



GLASS DOOR



SMART TOUCH SCREEN



SMART ACCESS CONTROL



MODULAR UPS



WIRE SLOT

FEATURES

- Modular, standardized and highly reliable design for high system stability
- Design solutions can be provided on the power supply and core cooling equipment configuration according to the actual conditions
- Improve planning and design efficiency, and properly configure system architecture according to IT business needs
- Standardized, modular components, factory assembled and pre-tested to reduce on-site assembly effort
- Realize on-demand deployment of data centers
- For the needs of large IDC construction, easy to quickly expand at any time in the data center
- Integrated modular components such as end cooling, terminal power distribution, and end cabling, on the basis of reducing initial investment, realize on-demand deployment of data centers, avoid idle waste of fixed assets, and ensure optimal infrastructure configuration for IT space in a large data center



Authorized Distributor :



Head Office

Jl. RE Martadinata No.12AA, Ancol,
Pademangan, Jakarta Utara 14430 - Indonesia
Phone : +6221 690 3311
Fax : +6221 690 3303
email : ampnet@ampnet-online.com

Subsidiary Office

Japfa Indoland Center Japfa Tower II
Lt. 6, Ruang 603
Jl. Panglima Sudirman No. 66 - 68
Surabaya
Phone : +6231 531 2324
Fax : +6231 531 2244