

SDR 26 (PN 0.6)

SAP No. (black/5.8M)	d _n (mm)	e _n (mm)
8010030738	110	4.2
8010031423	125	4.8
8010030794	160	6.2
	180	6.9
8010030783	200	7.7
8010030087	225	8.6
8010030091	250	9.6
	280	10.7
8010030101	315	12.1
	355	13.6
8010031970	400	15.3
8010030114	450	17.2
	500	19.1
	560	21.4
8010032009	630	24.1
	710	27.2
	800	30.6
	900	34.4
	1000	38.2
	1200	46.3
	1400	53.9
	1600	61.6

SDR 17 (PN1.0)

SAP No. (black/5.8M)	d _n (mm)	e _n (mm)
8010031422	75	4.5
8010030324	90	5.4
8010030225	110	6.6
8010031146	125	7.4
8010030241	160	9.5
8010030825	180	10.7
8010030249	200	11.9
8010031148	225	13.4
8010030261	250	14.8
8010031149	280	16.6
8010031151	315	18.7
8010031153	355	21.1
8010030279	400	23.7
8010031156	450	26.7
8010030294	500	29.7
8010031158	560	33.2
8010030308	630	37.4
	710	42.1
8010030320	800	47.4
	900	53.3
	1000	59.3

SDR 21 (PN 0.8)

SAP No. (black/5.8M)	d _n (mm)	e _n (mm)
8010031920	90	4.3
8010031919	110	5.3
8010033031	125	6.0
8010033030	140	6.7
8010033029	160	7.7
	180	8.6
8010031111	200	9.6
	225	10.8
	250	11.9
8010031113	280	13.4
	315	15.0
	355	16.9
	400	19.1
	450	21.5
8010031118	500	23.9
	560	26.7
	630	30.0
	710	33.9
	800	38.1
	900	42.9
	1000	47.7
	1200	57.2
	1400	66.8

SDR 13.6 (PN 1.25)

SAP No. (black/5.8M)	d _n (mm)	e _n (mm)
8010031718	50	3.7
8010031597	63	4.7
8010031673	75	5.6
8010011478	90	6.7
8010011479	110	8.1
8010032001	125	9.2
8010031455	160	11.8
8010032002	180	13.3
8010031433	200	14.7
8010031999	225	16.6
8010032013	250	18.4
	280	20.6
8010032000	315	23.2
8010033010	355	26.1
8010032012	400	29.4
8010032119	450	33.1
8010032117	500	36.8
8010032118	630	46.3
8010033143	★ 710	52.2
	800	58.8

The product mold marked as "★" on this page has not been improved, please note.

SDR 11 (PN 1.6)

SAP No. (black/5.8M)	d _n (mm)	e _n (mm)
8010011477	20	2.3
8010030746	25	2.3
8010030477	32	3.0
8010030484	40	3.7
8010030491	50	4.6
8010030500	63	5.8
8010030765	75	6.8
8010030506	90	8.2
8010030428	110	10.0
8010030433	125	11.4
8010030438	160	14.6
8010030444	180	16.4
8010031445	200	18.2
8010030458	225	20.5
8010031217	250	22.7
8010031218	280	25.4
8010030473	315	28.6
8010031444	355	32.2
8010031443	400	36.3
8010030488	450	40.9
8010030495	500	45.4
8010031424	560	50.8
8010032132	630	57.2
	710	64.5

Coil Pipe

SDR 13.6 (PN 1.25)

SAP No. (blue/50M)	d _n (mm)	e _n (mm)	Length (m/roll)
8010030604	63	4.7	50

Coil Pipe

SDR 11 (PN 1.6)

SAP No. (black/50M)	d _n (mm)	e _n (mm)	Length (m/roll)
8010031806	20	2.3	50/100
8010030754	25	2.3	50/100
8010030615	32	3.0	50/100
8010031543	40	3.7	50/100
8010030619	50	4.6	50
8010030620	63	5.8	50



■ Features

Material: PE 100

Size: full 20mm through 400mm availability

Pressure Rating: 1.6MPa or other nominal pressures available upon request

Standard: ISO 4427-3, EN 12201-3, BS EN 12201-3 AS/NZS 4129 BS 6920

Color: blue, black or other colors available upon request

Joint: joining pipe and electro fusion fittings by electro fusion joint

■ Advantages

Non-toxic: no heavy metal additives, would not be covered with dirt or contaminated by bacterium

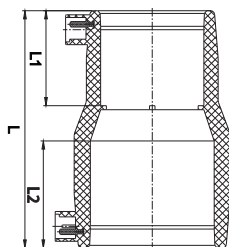
Corrosion Resistance: resist chemical matters and electron chemical corrosion

Low Installation Costs: light weight and ease of installation can reduce installation costs

High Flow Capacity: smooth interior walls result in low pressure loss and high volume

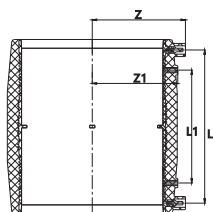
Longevity: more than 50 years under proper use

E/F Reducer



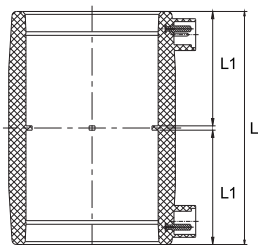
SAP Number (black)	Size (mm)	L	L1	L2	PCS/CTN
8010040493	32×25	89	41	44	250
8010040496	40×32	105	44	49	150
8010040497	50×32	115	44	55	126
8010040498	50×40	115	49	55	100
8010040499	63×32	130	44	63	72
8010040500	63×40	130	49	63	72
8010040501	63×50	130	55	63	70
8010040502	75×63	145	63	70	48
8010040503	90×63	175	63	79	28
8010040504	90×75	175	70	79	28
8010040474	110×50	160	55	82	24
8010040475	110×63	180	63	82	20
8010040476	110×75	180	70	82	24
8010040477	110×90	180	79	82	20
8010040478	125×90	195	79	87	14
8010040481	160×90	224	79	98	6
8010040479	160×110	224	82	98	6
8010040485	★ 200×63	250	63	112	5
8010040482	200×110	250	82	112	4
8010040483	200×160	250	98	112	4
	★ 225×110	255	82	120	
	★ 225×160	260	98	120	
8010040487	250×110	280	82	129	3
8010040488	250×160	280	98	129	2
8010040489	250×200	280	112	129	2
8010040490	315×160	320	98	150	
8010040491	315×200	320	112	150	1
8010040492	315×250	320	129	150	1
8010040494	400×200	370	112	179	
8010040495	400×315	370	150	179	

New Type Electro Fusion Coupling



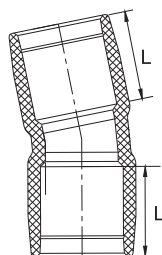
SAP Number (black)	Size (mm)	L	L1	Z	Z1	PCS/CTN
8010044891	90	131	87	69.5	45.4	
8010044821	110	137	93	68.5	55.4	
8010044468	160	175	129	106.4	97.7	
8010044825	200	183	137	126.5	123	

E/F Coupling



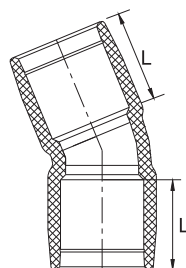
SAP Number (black)	Size (mm)	L	L1	PCS/CTN
8010040318	20	84	41	350
8010040321	25	84	41	320
8010040325	32	90	44	240
8010040327	40	100	49	180
8010040330	50	113	55	82
8010040332	63	129	63	54
8010040333	75	143	70	48
8010040334	90	161	79	32
8010040314	110	167	82	18
8010040315	125	177	87	12
8010040316	160	199	98	6
8010040317	180	213	105	4
8010040319	200	227	112	4
8010040320	225	243	120	2
8010040322	250	261	129	2
8010040323	280	273	135	2
8010040324	315	304	150	1
8010040326	355	332	164	1
8010040328	400	362	179	1
8010040329	450	394	194.5	
8010040331	500	429	212	
8010042122	560	476	234	
8010042123	630	546	270	

E/F 11.25° Elbow



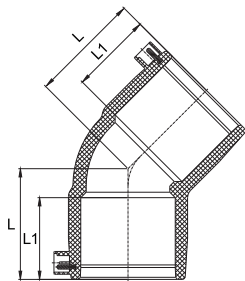
SAP Number (black)	Size (mm)	L	PCS/CTN
8010044792	50	55	46
8010044726	63	63	24
8010044728	75	70	30
8010044694	90	79	23

E/F 22.5° Elbow



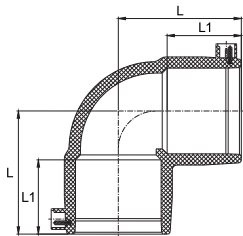
SAP Number (black)	Size (mm)	L	PCS/CTN
8010044793	50	55	42
8010044727	63	63	22
8010044729	75	70	30
8010044794	90	79	8

E/F 45° Elbow



SAP Number (black)	Size (mm)	L	L1	PCS/CTN
8010040362	32	56	44	180
8010040363	40	64	49	120
8010040365	50	73	55	80
8010040366	63	85	63	50
8010040367	75	95	70	48
8010040368	90	107	79	20
8010040355	110	116	82	12
8010040356	125	127	87	8
8010040357	160	150	98	4
8010040358	180	157	105	3
8010040359	200	170	112	2
	★ 225	182	120	
8010040360	250	202	129	1
8010040361	315	238	150	
8010040364	400	280	179	

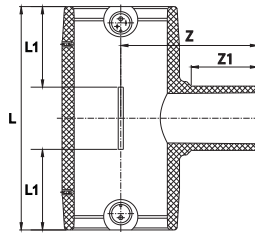
E/F 90° Elbow



SAP Number (black)	Size (mm)	L	L1	PCS/CTN
8010040379	20	54	41	360
8010040381	25	56.2	41	240
8010040384	32	65	44	160
8010040385	40	74	49	100
8010040387	50	86	55	60
8010040388	63	100	63	40
8010040389	75	114	70	24
8010040390	90	131	79	16
8010040375	110	145	82	9
8010040376	125	159	87	6
8010040377	160	192	98	4
8010040378	180	206	105	2
8010040380	200	225	112	2
8010044643	★ 225	245	120	
8010040382	250	265	129	1
8010040383	315	320	150	
8010040386	400	395	179	

The product mold marked as "★" on this page has not been improved, please note.

E/ F Reducing Tee

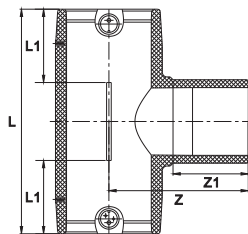


SAP Number (black)	Size (mm)	L	L1	Z1	Z	PCS/CTN
8010040434	32×20	107	44	43	70	130
8010040435	32×25	111.5	44	43	70	130
8010040441	40×20	118.5	49	43	76	90
8010040442	40×25	123	49	43	76	90
8010040443	40×32	129	49	46	79	90
8010040444	50×20	130.5	55	42	79.5	70
8010040445	50×25	135.8	55	43	81	65
8010040446	50×32	142.2	55	46	84	60
8010040447	50×40	149	55	51	89	60
8010040448	63×20	153	63	43	90	40
8010040449	63×25	158	63	43	90	40
8010040450	63×32	165.5	63	46	96	40
8010040451	63×40	172.5	63	51	101	40
8010040452	63×50	180.5	63	57	107	36
8010040453	75×40	186.3	70	51	109	
8010040454	75×50	194.2	70	57	115	
8010040455	75×63	204	70	65	123	
8010040456	90×40	197	79	51	120	16
8010040457	90×50	209.5	79	57	126	16
8010040458	90×63	219	79	65	134	15
8010040459	90×75	230	79	72	141	14
8010040403	110×50	218	82	57	140	10
8010040404	110×63	226	82	65	148	10

SAP Number (black)	Size (mm)	L	L1	Z1	Z	PCS/CTN
8010040405	110×75	238	82	72	155	9
8010040406	110×90	250	82	81	164	6
8010040408	125×63	239	87	65	160	6
8010040409	125×75	249.6	87	72	167	6
8010040410	125×90	261.6	87	81	175	6
8010040407	125×110	278.6	87	84	178	4
8010040412	160×50	249	98	57	174	4
8010040413	160×63	259	98	65	182	3
8010040414	160×75	270	98	72	189	3
8010040415	160×90	282	98	81	198	3
8010040411	160×110	298	98	84	201	
8010043150	180×160	352	105	100	230	2
8010040418	200×50	308	112	70	216	2
8010040419	200×63	308	112	70	216	
8010040420	200×75	308	112	81	227	
8010040421	200×90	308	112	81	227	2
8010040416	200×110	365	112	100	245	2
8010040417	200×160	365	112	100	245	
8010040425	250×50	330	129	80	252	
8010040426	250×63	330	129	80	252	
8010040427	250×75	330	129	80	254	
8010040428	250×90	358	129	90	265	1
8010040422	250×110	358	129	90	265	1
8010040423	250×160	430	129	110	291	1
8010040424	250×200	430	129	120	291	
8010040433	315×90	440	150	100	325	
8010040429	315×110	440	150	100	325	
8010040430	315×160	440	150	105	325	
8010040431	315×200	514	150	120	346	
8010040432	315×250	514	150	134	346	
8010040436	400×110	453	179	82	355	
8010040437	400×160	526	179	110	390	
8010040438	400×200	526	179	112	390	
8010040439	400×250	619	179	134	415	
8010040440	400×315	619	179	163	425	

Nominal Pressure is available in 0.6MPa, 1.0MPa and 1.6MPa.

E/F Tee



SAP Number (black)	Size (mm)	L	L1	Z1	Z	PCS/CTN
8010040289	20	98	41	42	60.5	180
8010040291	25	102	41	42	63	
8010040294	32	118	44	46	73	120
8010040295	40	136	49	51	84	70
8010040297	50	157	55	57	95	48
8010040298	63	190	63	65	115	30
8010040299	75	215	70	72	130	20
8010040300	90	242	79	81	150	12
8010040285	110	266	82	86	167	7
8010040286	125	290	87	89	181	5
8010040287	160	338	98	105	222	3
8010040288	180	368	105	107	237	2
8010040290	200	398	112	115	255	1
8010044640	★ 225	460	120	129	290	
8010040292	250	472	129	135	301	1
8010040293	315	567	150	150	360	
8010040296	400	690	179	179	440	

E/F Tapping Saddle



SAP Number (black)	Size (mm)	PCS/CTN
8010042710	63×25	
8010042711	63×32	
8010042712	75×32	
8010042713	90×32	
8010042714	90×63	12
8010042715	110×32	
8010042716	110×40	
8010042717	110×63	10
8010042718	125×32	
8010042719	125×63	
8010042720	160×32	
8010042721	160×63	5
8010042722	180×32	
8010042723	180×63	
8010042724	200×32	
8010042725	200×63	
8010042726	200×90	4
8010042727	250×90	3
8010042728	★ 315×110	
8010042729	★ 315×160	

The product mold marked as "★" on this page has not been improved, please note.

E/F Straight Saddle



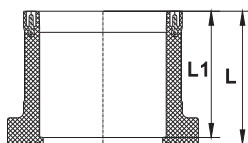
SAP Number (black)	Size (mm)	PCS/CTN
8010042696	75×63	
8010042697	90×63	40
8010042698	110×63	30
8010042699	125×63	
8010042700	160×63	
8010042701	180×63	
8010042702	200×63	12
8010042703	200×90	12
8010042704	★ 250×63	
8010042705	250×90	12
8010042706	★ 315×63	
8010042707	★ 315×90	
8010042708	315×110	4
8010042709	315×160	3

E/F Stop Saddle



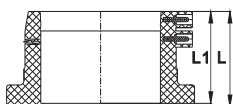
SAP Number (black)	Size (mm)	PCS/CTN
8010041359	90	36
8010041353	110	30
8010041354	125	30
8010041355	160	30
8010041356	200	20
8010041357	250	
8010041358	315	8

E/F Stub Flange



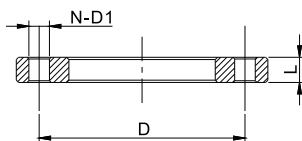
SAP Number (black)	Size (mm)	L	L1	PCS/CTN
8010043684	50	62	55	
8010043692	63	66	63	
8010043685	75	73	70	
8010042116	90	81	79	
8010040278	160	128	125	12
8010040279	200	138	134	6
8010040280	250	142	138	3
8010040281	315	159	150	2
8010040282	400	185	175	
8010040283	500	220	210	
8010043074	630	283	255	

E/F Stub Flange (short)

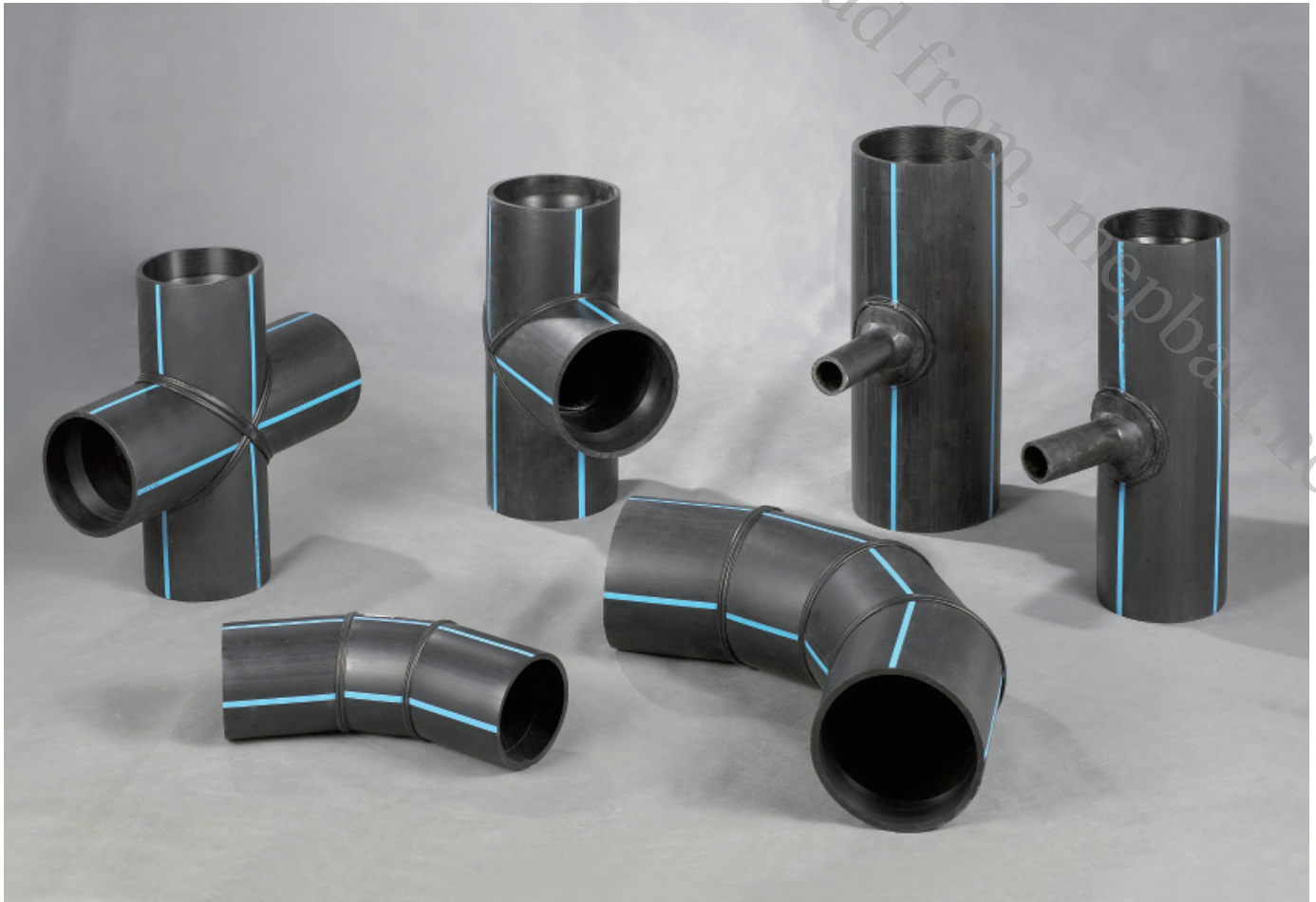


SAP Number (black)	Size (mm)	L	L1	PCS/CTN
8010043075	110	88	85	

E/F Flange (Steel Tray)



SAP Number (black)	Size (mm)	N	D1	D	L	PCS/CTN
8010043104	50	4	18	75	10	
8010043105	63	4	18	82.5	12	
8010043106	75	4	18	92.5	15	
8010042113	90	8	19	100	15	
8010040267	110	8	18	180	22	3
8010040268	160	8	22	240	24	1
8010040269	200	12	22	295	26	1
8010040270	250	12	26	355	29	1
8010040271	315	12	26	410	32	1
8010040273	400	16	30	525	36	1
8010040274	500	20	33	650	44	
8010043076	630	20	36	770	54	



■ Features

Material: PE 100

Size: full 110mm through 800mm availability

Pressure Rating: 0.6MPa, 1.0MPa, 1.6MPa or other nominal pressures available upon request

Standard: ISO 4427-3 EN 12201-3 BS EN 12201-3 BS 6920

Color: blue, black with blue stripes or other colors available upon request

Angles: various angles available upon request

Joint: joining pipe and fabricated fittings by butt fusion joint

■ Advantages

Non-toxic: no heavy metal additives, would not be covered with dirt or contaminated by bacterium

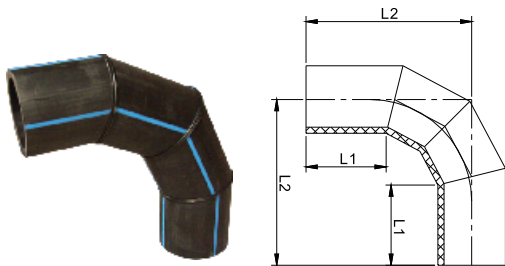
Corrosion Resistance: resist chemical matters and electron chemical corrosion

Low Installation Costs: light weight and ease of installation can reduce installation costs

High Flow Capacity: smooth interior walls result in low pressure loss and high volume

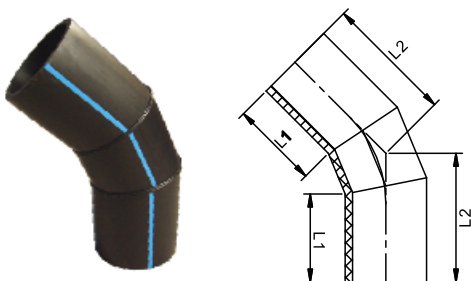
Longevity: more than 50 years under proper use

Fabricated 90° Elbow



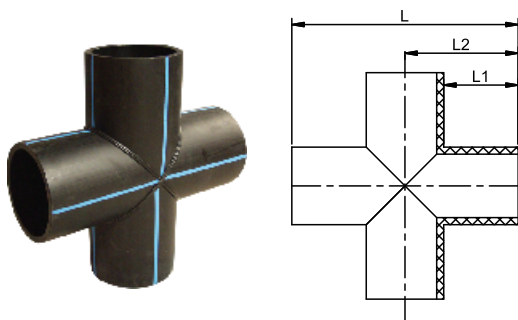
SAP Number (black)		Size (mm)	L1	L2	PCS/CTN
1.0MPa	1.25MPa				
-----	8010045010	355	345	835.7	
8010045003	8010045011	400	375	909.7	
8010045004	8010045012	450	405	985.2	
8010045005	8010045013	500	405	1086.2	
8010045006	8010045014	560	480	1197.1	
8010045007	8010045015	630	525	1304.5	
8010045008	8010045016	710	540	1414.1	
8010045009	8010045017	800	565	1552.4	

Fabricated 45° Elbow



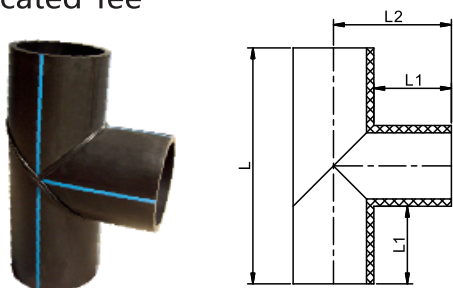
SAP Number (black)		Size (mm)	L1	L2	PCS/CTN
1.0MPa	1.25MPa				
8010044987	8010044995	355	525	525.9	
8010044988	8010044996	400	550	550.7	
8010044989	8010044997	450	581	581.4	
8010044990	8010044998	500	622	622.2	
8010044991	8010044999	560	697	697.8	
8010044992	8010045000	630	170	740.8	
8010044993	8010045001	710	791	791.3	
8010044994	8010045002	800	848	848.9	

Fabricated Cross



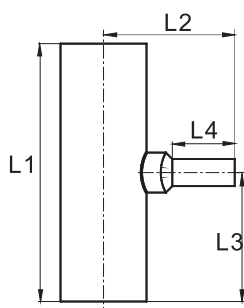
SAP Number (black)		Size (mm)	L1	L2	L	PCS/CTN
0.6MPa	0.8MPa					
8010045026	8010045035	250	250	375	750	
8010045027	8010045036	280	250	390	780	
8010045028	8010045037	315	300	457.5	915	
8010045029	8010045038	355	300	477.5	955	
8010045030	8010045039	400	300	500	1000	
8010045031	8010045040	450	300	525	1050	
8010045032	8010045041	500	350	600	1200	
8010045033	8010045042	560	350	630	1260	
8010045034	8010045043	630	350	665	1330	

Fabricated Tee



SAP Number (black)		Size (mm)	L1	L2	L	PCS/CTN
0.6MPa	0.8MPa					
8010045018	8010045022	450	300	500	1000	
8010045019	8010045023	500	300	525	1050	
8010045020	8010045024	560	350	600	1200	
8010045021	8010045025	630	350	665	1330	

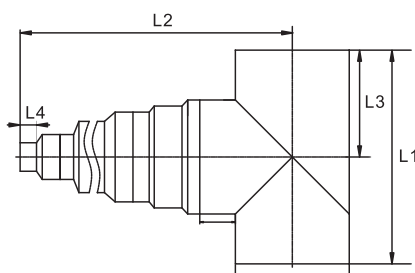
Fabricated Reducing Tee



Note:
 ≤ dn630 specifications with 0.6、0.8MPa;
 When pressure levels of the main pipe and
 branch pipe are different, please indicate
 when placing order and customize the
 product.

SAP Number (black)		Size (mm)	L1	L2	L3	L4	PCS/CTN
0.6MPa	0.8MPa						
8010045044	8010045094	200×63	600	305	300	145	
8010045045	8010045095	200×75	600	325	300	145	
8010045046	8010045096	225×63	600	315	300	145	
8010045047	8010045097	225×75	600	337.5	300	155	
8010045048	8010045098	225×90	600	347.5	300	160	
8010045049	8010045099	225×110	600	357.5	300	155	
8010045050	8010045100	250×75	630	350	315	155	
8010045051	8010045101	250×90	630	360	315	155	
8010045052	8010045102	250×125	630	385	315	160	
8010045053	8010045103	280×63	670	345	335	145	
8010045054	8010045104	280×75	670	365	335	155	
8010045055	8010045105	280×90	670	375	335	155	
8010045056	8010045106	280×110	670	385	335	160	
8010045057	8010045107	280×125	670	400	335	160	
8010045058	8010045108	315×63	670	362.5	335	145	
8010045059	8010045109	315×75	670	382.5	335	155	
8010045060	8010045110	315×90	670	392.5	335	155	
8010045061	8010045111	315×125	670	417.5	335	160	
8010045062	8010045112	355×63	670	382.5	335	145	
8010045063	8010045113	355×75	670	402.5	335	155	
8010045064	8010045114	355×90	670	412.5	335	155	
8010045065	8010045115	355×110	670	422.5	335	160	
8010045066	8010045116	355×125	670	437.5	335	160	
8010045067	8010045117	355×160	670	447.5	335	160	
8010045068	8010045118	400×63	720	405	360	145	
8010045069	8010045119	400×75	720	425	360	155	
8010045070	8010045120	400×90	720	435	360	155	
8010045071	8010045121	400×110	720	445	360	160	
8010045072	8010045122	400×125	720	460	360	160	
8010045073	8010045123	400×160	720	470	360	160	
8010045074	8010045124	450×63	720	430	360	145	
8010045075	8010045125	450×75	720	450	360	155	
8010045076	8010045126	450×90	720	460	360	155	
8010045077	8010045127	450×110	720	470	360	160	
8010045078	8010045128	450×125	720	485	360	160	
8010045079	8010045129	450×160	720	495	360	160	
8010045080	8010045130	500×63	760	455	380	145	
8010045081	8010045131	500×75	760	475	380	155	
8010045082	8010045132	500×90	760	485	380	155	
8010045083	8010045133	500×110	760	495	380	160	
8010045084	8010045134	500×125	760	510	380	160	
8010045085	8010045135	500×160	760	520	380	160	
8010045086	8010045136	560×110	760	525	380	160	
8010045087	8010045137	560×160	760	550	380	160	
8010045088	8010045138	630×63	760	520	380	145	
8010045089	8010045139	630×75	760	540	380	155	
8010045090	8010045140	630×90	760	550	380	155	
8010045091	8010045141	630×110	760	560	380	160	
8010045092	8010045142	630×125	760	575	380	160	
8010045093	8010045143	630×160	760	585	380	160	

Fabricated Reducing Tee Assembly



Note:

≤ dn315 specifications with 0.6, 0.8, 1.0, 1.6MPa
(200×50,250×50,315×50 only with 0.6,0.8MPa);
dn355,400 specifications with 0.6, 0.8, 1.0MPa
(355×50,400×50 only with 0.6,0.8MPa);

≥ dn450 specifications with 0.6, 0.8MPa;

When pressure levels of the main pipe and branch pipe are different, please indicate when placing order and customize the product.

SAP Number (black)				Size (mm)	L1	L2	L3	L4	PCS/CTN
0.6MPa	0.8MPa	1.0MPa	1.6MPa						
8010045144	8010045201	—	—	200×50	600	346.5	300	25	
8010045149		8010041138	8010041316	200×125	426	435	213	90	
8010045150		8010041145	8010041317	225×125	530	675	265	75	
8010045151	8010042488	8010041146	8010041318	225×160	530	485	265	80	
8010045152	8010042489	8010041147	8010041319	225×200	530	460	265	85	
8010045145	8010045202	—	—	250×50	630	359.6	315	25	
8010045153	8010042494	8010041309	8010043352	250×200	600	526	300	84.8	
8010045154	8010042495	8010041156	8010041258	250×225	600	495	300	90	
8010045155	8010042498	8010041163	8010044860	280×160	632	800	316	80	
8010045156	8010042499	8010041536	8010044857	280×200	632	791	316	84.8	
8010045146	8010045203	—	—	315×50	670	385.3	335	25	
8010045157	8010042504	8010042625	8010041990	315×225	710	570	355	90	
8010045158	8010042505	8010041174	8010041274	315×250	710	585	355	88	
8010045159	8010042506	8010041175	8010041275	315×280	710	585	355	88	
8010045147	8010045204	—	—	355×50	670	405.3	355	25	
8010045160		8010043403	—	355×180	660	795	330	80	
8010045161	8010042509	8010041183	—	355×200	660	602	330	75	
8010045162		8010043405	—	355×225	660	750.2	330	90	
8010045163	8010042510	8010041185	—	355×250	660	560	330	77	
8010045164		8010041601	—	355×280	660	729.2	330	85	
8010045165	8010042511	8010043426	—	355×315	660	535.2	330	85	
8010045148	8010045205	—	—	400×50	720	427.2	360	25	
8010045166	8010042514	8010041395	—	400×200	715	612.5	357.5	70	
8010045167	8010042515	8010041438	—	400×225	715	781.5	357.5	90	
8010045168	8010042516	8010041436	—	400×250	715	579.6	357.5	75	
8010045169		8010041194	—	400×280	715	562.3	357.5	77	
8010045170	8010042518	8010041556	—	400×355	715	-	357.5	-	

Fabricated Reducing Tee Assembly

SAP Number (black)				Size (mm)	L1	L2	L3	L4	PCS/CTN
0.6MPa	0.8MPa	1.0MPa	1.6MPa						
8010045171	8010045206			450×180	1050	864	525	90	
8010045172	8010045207			450×200	1050	669	525	65	
8010045173	8010045208			450×225	1050	750.6	525	90	
8010045174	8010045209			450×250	1050	631.5	525	77	
8010045175	8010045210			450×280	1050	-	525	-	
8010045176	8010045211			450×315	1050	544	525	37	
8010045177	8010045212			450×355	1050	685	525	97	
8010045178	8010045213			450×400	1050	685	525	97	
8010045179	8010045214			500×180	1200	1236	600	90	
8010045180	8010045215			500×200	1200	1041	600	95	
8010045181	8010045216			500×225	1200	1044	600	100	
8010045182	8010045217			500×250	1200	1004	600	88	
8010045183	8010045218			500×280	1200	960	600	85	
8010045184	8010045219			500×315	1200	765	600	95	
8010045185	8010045220			500×355	1200	765	600	95	
8010045186	8010045221			500×400	1200	765	600	95	
8010045187	8010045222			500×450	120	765	600	130	
8010045188	8010045223			560×225	1260	1280	630	100	
8010045189	8010045224			560×280	1260	1195	630	85	
8010045190	8010045225			560×315	1260	1000	630	95	
8010045191	8010045226			630×180	1330	1605	665	90	
8010045192	8010045227			630×200	1330	1410	665	115	
8010045193	8010045228			630×225	1330	1410	665	100	
8010045194	8010045229			630×250	1330	1364	665	88	
8010045195	8010045230			630×280	1330	1325	665	85	
8010045196	8010045231			630×315	1330	1130	665	95	
8010045197	8010045232			630×355	1330	1130	665	95	
8010045198	8010045233			630×400	1330	1130	665	95	
8010045199	8010045234			630×450	1330	1130	665	130	
8010045200	8010045235			630×500	130	865	665	100	

Pipe Cutter



SAP Number	Model	Application Range
8010041504	TU 140	50~140
8010041505	T3	100~160
	T4	180~315

Blade Scraper



SAP Number	Model	Application Range
8010041502	Small Scraper	1,5"
8010041503	Big Scraper	2.0"

Rotation Scraper



SAP Number	Model	Application Range
8010042738	RTC160	50~160
	RTC315	75~315

Socket Fusion Welding Machine



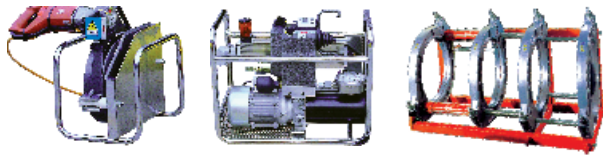
SAP Number	Model	Application Range
8010041418	1000w	20~63
8010041419	1600w	75~110
8010041420	2500w	160

Melting Socket



SAP Number	Model	Application Range
8010040972		20
8010040973		25
8010040974		32
8010040975		40
8010040976		50
8010040977		63
8010040978		75
8010040979		90
8010040970		110
8010040971		160

Butt Fusion Welding Machine



SAP Number	Model	Application Range
8010041410	160	63~160
8010041411	250	90~250
8010041382	250	110~250
8010041553	315	160~315
	450	280~450
	630	400~630
	800	630~800
	1200	900~1200

Electro Fusion Welding Machine



SAP Number	Model	Application Range
8010041972	DRJ-CA-9C	
8010042745	DRJ-CA-15C	

It can save the data and the data can be printed when connecting to the computer.

LESSO

Download from: mep.pli.net

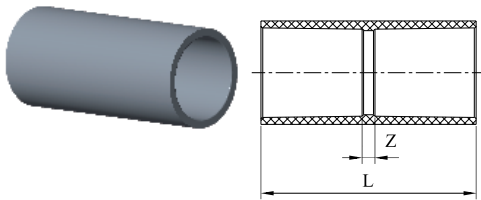


JIS PVC-U Fittings



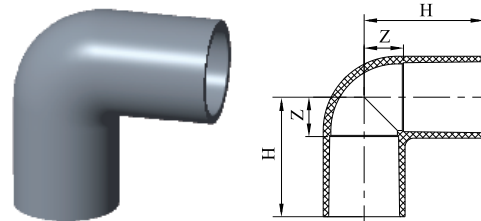
www.lesso.com

Socket (AW)



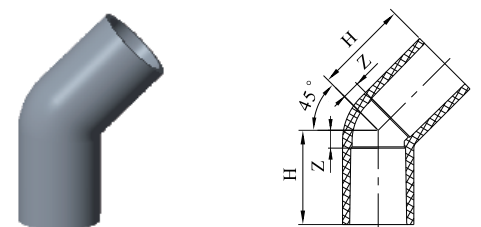
SAP Number	Size (mm)	L	Z	PCS /CTN	Carton Size (mm×mm×mm)
8010024550	1/2"	67	7	300	410×280×330
8010024551	3/4"	77	7	300	410×280×330
8010024448	1"	87	7	128	410×280×330
8010024386	1-1/4"	95	4	120	410×280×330
8010024387	1-1/2"	117	7	78	410×280×330
8010024812	2"	133	7	96	560×420×330
8010024327	2-1/2"	145	19	48	560×420×330
8010024552	3"	155	27	40	560×420×330
8010024388	4"	200	32	16	560×420×330
8010024948	6"	286	22	12	560×420×330

Elbow (AW)



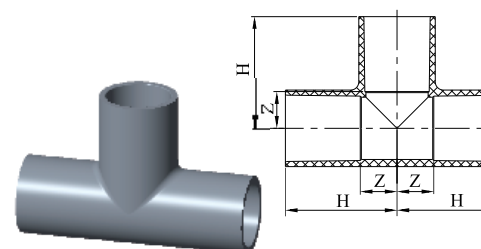
SAP Number	Size (mm)	H	Z	PCS /CTN	Carton Size (mm×mm×mm)
8010024350	1/2"	30	13	300	410×280×330
8010024351	3/4"	50	15	200	410×280×330
8010024318	1"	58	40	100	410×280×330
8010024352	1-1/4"	68	22.5	60	410×280×330
8010024403	1-1/2"	82	27	50	410×280×330
8010024319	2"	96	33	30	410×280×330
8010024353	2-1/2"	110	47	36	560×420×330
8010024354	3"	120	56	24	560×420×330
8010024355	4"	153	69	10	560×420×330
8010025333	6"	230	98		

45°Elbow (AW-45L)



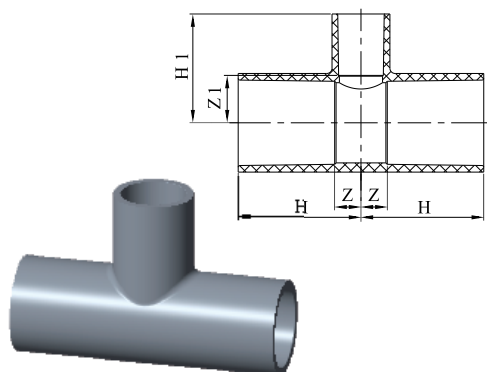
SAP Number	Size (mm)	L	Z	PCS /CTN	Carton Size (mm×mm×mm)
8010024438	1/2"	37	7	250	410×280×330
8010024347	3/4"	44	9	200	410×280×330
8010024348	1"	51	11	100	410×280×330
8010024349	2"	80	17	60	560×420×330
8010024873	4"	122	38	10	560×420×330
8010024874	6"	184	52	3	560×420×330

Tee (AW)



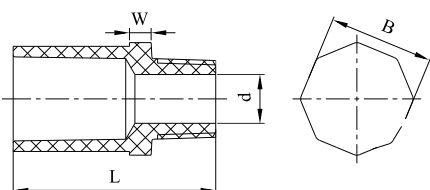
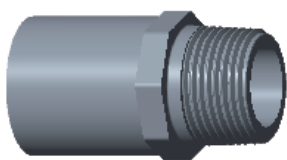
SAP Number	Size (mm)	H	Z	PCS /CTN	Carton Size (mm×mm×mm)
8010024356	1/2"	43	13	150	410×280×330
8010024192	3/4"	50	15	125	410×280×330
8010024357	1"	58	18	75	410×280×330
8010024358	1-1/4"	69	23.5	48	410×280×330
8010024359	1-1/2"	82	27	56	560×420×330
8010024360	2"	96	33	48	560×420×330
8010024361	2-1/2"	110	47	24	560×420×330
8010024362	3"	120	56	15	560×420×330
8010024363	4"	152	68	7	560×420×330
8010024982	6"	230	98	2	560×420×330

Reducing Tee (AW)



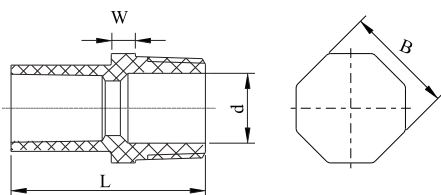
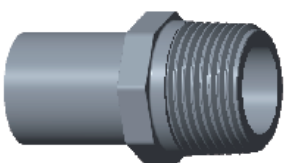
SAP Number	Size (mm)	H	H1	Z	Z1	PCS /CTN	Carton Size (mm×mm×mm)
8010024440	3/4"×1/2"	48	45	13	15	125	410×280×330
8010024324	1"×1/2"	53	48	13	18	100	410×280×330
8010024368	1"×3/4"	55	53	15	18	100	410×280×330
8010024369	1-1/4"×1/2"	59	54	13.5	24	78	410×280×330
8010024414	1-1/4"×3/4"	60.5	59	15	24	60	410×280×330
8010024444	1-1/4"×1"	64	63	18.5	23	66	410×280×330
8010024370	1-1/2"×1/2"	68	57	13	27	48	410×280×330
8010024371	1-1/2"×3/4"	70	62	15	27	90	560×420×330
8010024372	1-1/2"×1"	73	67	18	27	36	410×280×330
8010024373	1-1/2"×1-1/4"	78	73	23	27.5	72	560×420×330
8010024374	2"×1/2"	76	63	13	33	72	560×420×330
8010024375	2"×3/4"	78	68	15	33	60	560×420×330
8010024376	2"×1"	81	73	18	33	64	560×420×330
8010024377	2"×1-1/4"	86	79	23	33.5	64	560×420×330
8010024378	2"×1-1/2"	90	88	27	33	50	560×420×330
8010024415	3"×2"	105	110	41	47	18	560×420×330

Valve Socket (AW)



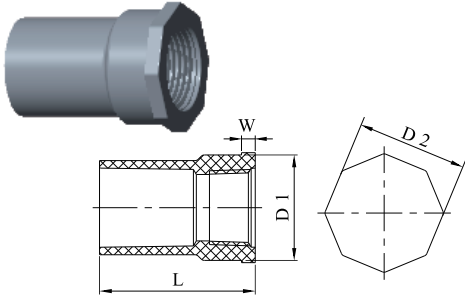
SAP Number	Size (mm)	L	W	d	B	PCS /CTN	Carton Size (mm×mm×mm)
8010024411	1/2"	54	6	13	28.4	450	410×280×330
8010024659	3/4"	64	8	18	33	300	410×280×330
8010024412	1"	71	8	23	39.3	180	410×280×330
8010024660	1-1/4"	80	10	31	49.3	130	410×280×330
8010024367	1-1/2"	92	10	37	56.2	120	410×280×330
8010024442	2"	106	12	48	70	132	560×420×330
8010024810	3"	127	16	75	101		
8010024443	4"	157	18	98	129	24	560×420×330

Valve Socket (AW)



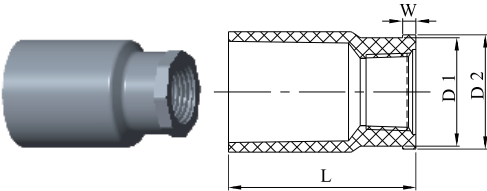
SAP Number	Size (mm)	L	W	d	B	PCS /CTN	Carton Size (mm×mm×mm)
8010024658	3/4"×1/2"	59	6	13	34	390	410×280×330
8010024561	1/2"×1"	64	8	23	36	300	410×280×330
8010024549	3/4"×1"	64	8	23	36	300	410×280×330

Faucet Socket (AW)



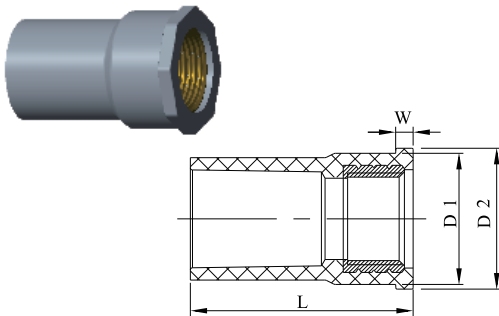
SAP Number	Size (mm)	L	W	D1	D2	PCS /CTN	Carton Size (mm×mm×mm)
8010024365	1/2"	51	5	30	30	400	410×280×330
8010024323	3/4"	59	4.5	37	39	250	410×280×330
8010024423	1"	68	6	46	48	125	410×280×330
8010024366	1-1/4"	72	9	53	53	144	410×280×330
8010024321	1-1/2"	84	10	58	58	84	410×280×330
8010024322	2"	99	12	73	73	60	410×280×330

Faucet Socket (AW)



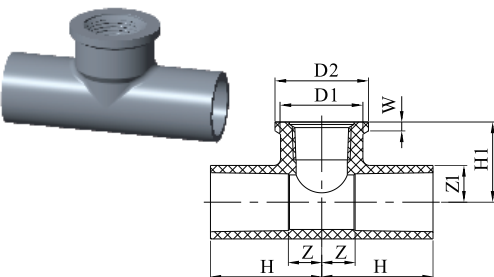
SAP Number	Size (mm)	L	W	D1	D2	PCS /CTN	Carton Size (mm×mm×mm)
8010024876	3/4"×1/2"	55	2	22.5	30	240	410×280×330
8010024408	1"×1/2"	63	2	22.5	30	100	410×280×330
8010024548	1/2"×1"	60	6	34.5	46	250	410×280×330
8010024320	3/4"×1"	64	6	35.5	46	200	410×280×330

Faucet Socket With Metal Insert (AW)



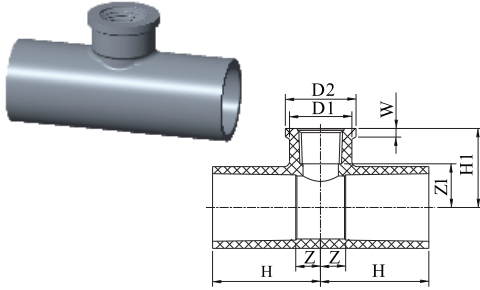
SAP Number	Size (mm)	L	W	D1	D2	PCS /CTN	Carton Size (mm×mm×mm)
8010024389	1/2"	51	4	22.5	30	300	410×280×330
8010024197	3/4"	59	4.5	28	38.5	240	410×280×330
8010024198	3/4"×1/2"	57	4	22.5	30	240	410×280×330

Faucet Tee (AW)



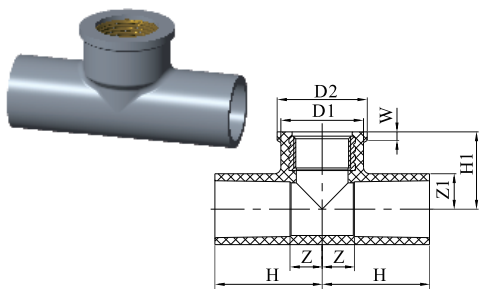
SAP Number	Size (mm)	Z	Z1	W	H	H1	D1	D2	PCS /CTN	Carton Size (mm×mm×mm)
8010024364	1/2"	10	15	2	43	32	30	34	192	410×280×330
8010024421	3/4"	15	17	2.5	50	36	37	42	100	410×280×330

Faucet Tee (AW)



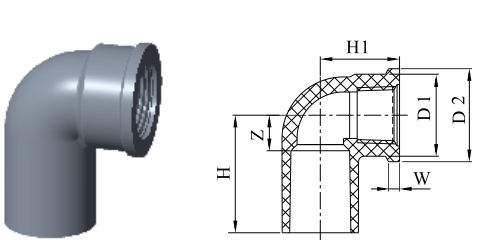
SAP Number	Size (mm)	Z	Z1	W	H	H1	D1	D2	PCS /CTN	Carton Size (mm×mm×mm)
8010024440	3/4"×1/2"	12	17	2	47	34	30	34	160	410×280×330
8010024422	1"×1/2"	12	21	2	52	38	30	34	90	410×280×330

Faucet Tee With Metal Insert (AW)



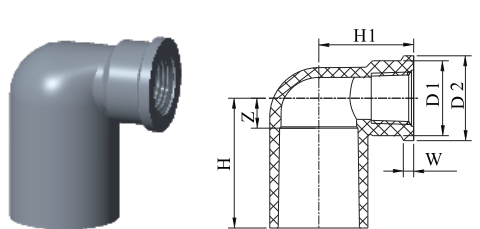
SAP Number	Size (mm)	Z	Z1	W	H	H1	D1	D2	PCS /CTN	Carton Size (mm×mm×mm)
8010024563	1/2"	13	14	4	43	30	30	33	300	410×280×330
8010024424	3/4"	15	18	4	50	36	38.5	42	240	410×280×330
8010024425	3/4"×1/2"	12	18	4	47	34	30	33	240	410×280×330

Faucet Elbow (AW)



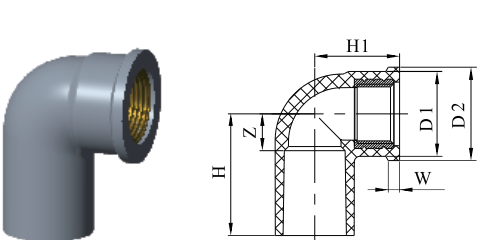
SAP Number	Size (mm)	Z	W	H	H1	D1	D2	PCS /CTN	Carton Size (mm×mm×mm)	
8010024875	1/2"	13	4	43	30	30	34	300	410×280×330	
8010024806	3/4"	15	4	50	36	37	42	200	410×280×330	
8010024562	1"	21	5	61	43	46	50	120	410×280×330	

Faucet Elbow (AW)



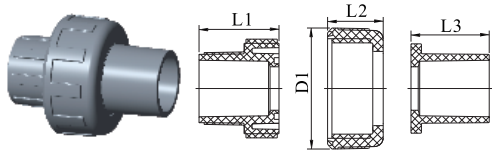
SAP Number	Size (mm)	Z	W	H	H1	D1	D2	PCS /CTN	Carton Size (mm×mm×mm)	
8010024807	3/4"×1/2"	12	2	47	34	30	34	240	410×280×330	
8010024808	1"×1/2"	12	2	52	38	30	34	160	410×280×330	

Faucet Elbow With Metal Insert (AW)



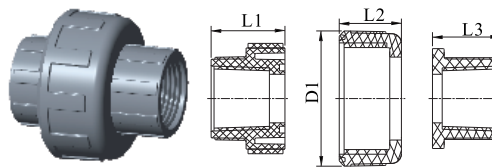
SAP Number	Size (mm)	Z	W	H	H1	D1	D2	PCS /CTN	Carton Size (mm×mm×mm)	
8010024449	1/2"	13	4	43	30	30	33	240	410×280×330	
8010024418	3/4"	15	4	50	36	37	42	120	410×280×330	
8010024426	3/4"×1/2"	12	4	47	34	30	33	180	410×280×330	

Union Socket (AW)



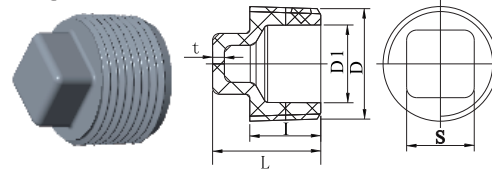
SAP Number	Size (mm)	L1	L2	L3	D1	PCS /CTN	Carton Size (mm×mm×mm)
8010024553	1/2"	35	28	34	56	100	410×280×330
8010024813	3/4"	41	30	39	62	90	410×280×330
8010024419	1"	46	32	45	69.5	60	410×280×330
8010024450	1-1/4"	53	36	53	84.4	40	410×280×330
8010024420	1-1/2"	63	39	63	96.4	30	410×280×330

Union Threaded (AW)



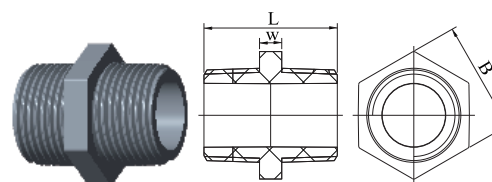
SAP Number	Size (mm)	L1	L2	L3	D1	PCS /CTN	Carton Size (mm×mm×mm)
8010024554	1/2"	32.5	28	31	56	110	410×280×330
8010024949	3/4"	33	30	30	62	100	410×280×330
8010024814	1"	38	32	35	69.5	64	410×280×330
8010024451	1-1/4"	42	36	37	84.4	48	410×280×330
8010024452	1-1/2"	48	39	41	96.4	40	410×280×330

Plug (AW)



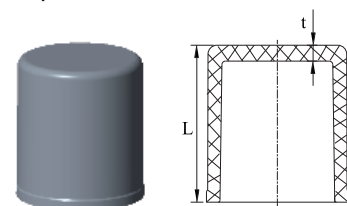
SAP Number	Size (mm)	L	I	D	D1	PCS /CTN	Carton Size (mm×mm×mm)
8010024809	1/2"	25.5	16.6	R1/2"	13	1350	410×280×330
8010024877	3/4"	28	18.7	R3/4"	18		
8010024878	1"	32	21	R1"	23		

Double Nipple (AW)



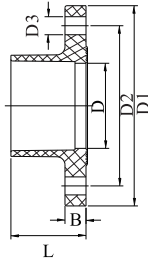
SAP Number	Size (mm)	L	W	B	PCS /CTN	Carton Size (mm×mm×mm)
8010024409	1/2"	38	6	24	750	410×280×330
8010024410	3/4"	42	8	33	450	410×280×330
8010024441	1"	48	8	40	300	410×280×330

Cap (AW)



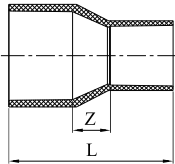
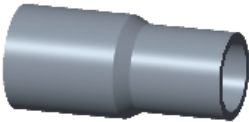
SAP Number	Size (mm)	L	PCS /CTN	Carton Size (mm×mm×mm)
8010024405	1/2"	34	510	410×280×330
8010024406	3/4"	39.2	450	410×280×330
8010024547	1"	45.5	300	410×280×330
8010024407	2"	68.8	80	410×280×330
8010024439	3"	71.65	80	560×420×330
8010024663	4"	93.55	60	560×420×330

Flange PVC (AW)



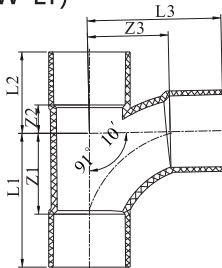
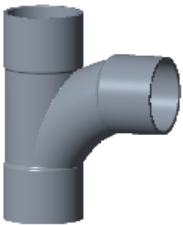
SAP Number	Size (mm)	L	B	D	D1	D2	D3	PCS /CTN	Carton Size (mm×mm×mm)
8010024802	2"	70	16	55	155	120	18	24	410×280×330
8010024803	3"	75	21	85	200	160	18	10	410×280×330
8010024804	4"	95	22	107	212	180	18	18	560×420×330
8010024805	6"	144	23	154	285	240	22	5	560×420×330

Reducing Socket (AW)



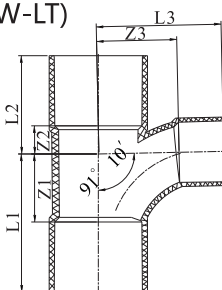
SAP Number	Size (mm)	L	Z	PCS /CTN	Carton Size (mm×mm×mm)
8010024193	3/4"×1/2"	71	6	360	410×280×330
8010024416	1"×1/2"	84	14	160	410×280×330
8010024194	1"×3/4"	84	9	200	410×280×330
8010024379	1-1/4"×1/2"	99	23.5	180	410×280×330
8010024326	1-1/4"×3/4"	93	12.5	180	410×280×330
8010024195	1-1/4"×1"	93	7.5	120	410×280×330
8010024325	1-1/2"×1/2"	110	25	100	410×280×330
8010024196	1-1/2"×3/4"	114	24	100	410×280×330
8010024380	1-1/2"×1"	114	19	90	410×280×330
8010024381	1-1/2"×1-1/4"	114	13.5	81	410×280×330
8010024417	2"×1/2"	136	43	54	410×280×330
8010024445	2"×3/4"	136	37	108	560×420×330
8010024661	2"×1"	136	30	108	560×420×330
8010024662	2"×1-1/4"	125	16	108	560×420×330
8010024446	2"×1-1/2"	136	15	108	560×420×330
8010024382	3"×2"	165	35	60	560×420×330
8010024811	4"×1-1/2"	199	57	30	560×420×330
8010024383	4"×2"	182	32	30	560×420×330
8010024384	4"×3"	190	42	24	560×420×330
8010024385	6"×3"	275	79	8	560×420×330
8010024447	6"×4"	295	79	6	560×420×330

Large Radius Tee (AW-LT)



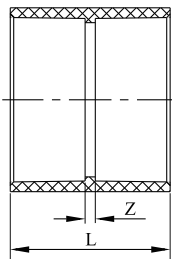
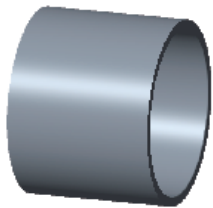
SAP Number	Size (mm)	L1	L2	L3	Z1	Z2	Z3	PCS /CTN	Carton Size (mm×mm×mm)
8010025106	4"	341	129	212	128	45	128	6	560×420×330

Large Radius Tee (AW-LT)



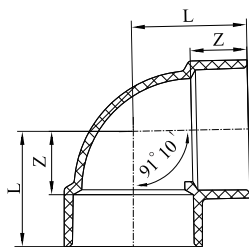
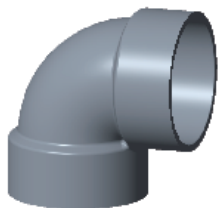
SAP Number	Size (mm)	L1	L2	L3	Z1	Z2	Z3	PCS /CTN	Carton Size (mm×mm×mm)
8010025107	4×2"	150	116	153	66	32	90	8	560×420×330
8010025487	6×4"	260	185	236	128	53	152	5	690×460×530

Socket (D-DS)



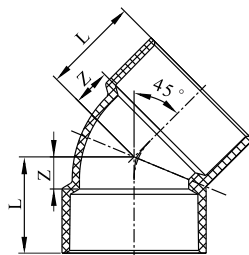
SAP Number	Size (mm)	L	Z	PCS /CTN	Carton Size (mm×mm×mm)
8020022639	1-1/4"	39	3	280	410×280×330
8020022808	1-1/2"	47	3	210	410×280×330
8020022667	2"	53	3	120	410×280×330
8020022624	2-1/2"	73	3	120	410×280×330
8020022668	3"	84	4	60	560×420×330
8020022669	4"	104	4	36	560×420×330
8020022670	6"	164	4	12	560×420×330

Elbow (D-DT)



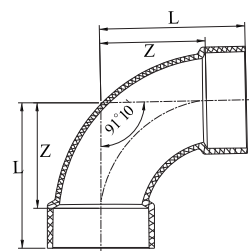
SAP Number	Size (mm)	L	Z	PCS /CTN	Carton Size (mm×mm×mm)
8020022746	1-1/4"	44	26	170	410×280×330
8020022760	1-1/2"	49	27	100	410×280×330
8020022822	2"	58	33	60	410×280×330
8020022619	2-1/2"	77	42	150	560×420×330
8020022650	3"	88	48	35	560×420×330
8020022806	4"	112	62	18	560×420×330
8020022807	6"	168	88	5	560×420×330

45° Elbow (D-45L)



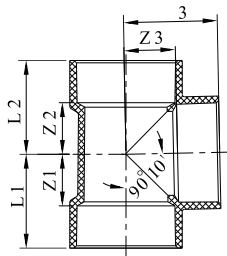
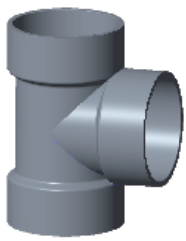
SAP Number	Size (mm)	L	Z	PCS /CTN	Carton Size (mm×mm×mm)
8020022805	1-1/4"	30	12	180	410×280×330
8020022754	1-1/2"	36	14	120	410×280×330
8020022742	2"	43	18	70	410×280×330
8020022618	2-1/2"	57	22	35	410×280×330
8020022755	3"	65	25	40	560×420×330
8020022756	4"	80	30	21	560×420×330
8020022757	6"	124	44	5	560×420×330

Large Radius Elbow (D-DLL)



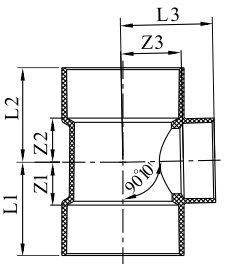
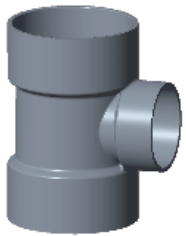
SAP Number	Size (mm)	L	Z	PCS /CTN	Carton Size (mm×mm×mm)
8020022759	1-1/4"	63	45	100	410×280×330
8020022649	2"	91	66	40	410×280×330
8020022789	3"	140	100	12	410×280×330
8020022744	4"	178	128		
8020022745	6"	250	170		

Tee (D-DT)



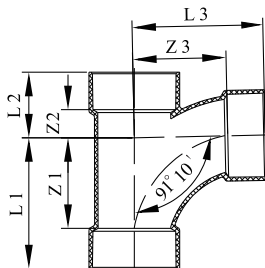
SAP Number	Size (mm)	L1	L2	L3	Z1	Z2	Z3	PCS /CTN	Carton Size (mm×mm×mm)
8020022651	1-1/4"	40	40	40	22	22	19.3	108	410×280×330
8020022652	1-1/2"	49	49	49	27	27	24.3	50	410×280×330
8020022784	2"	59	59	59	34	34	30.9	40	410×280×330
8020022628	2-1/2"	77	78	77	42	43	38.9	40	560×420×330
8020022761	3"	88	89	88	48	49	44.4	35	560×420×330
8020022653	4"	112	113	112	62	63	57.5	8	560×420×330
8020022638	6"	169	170	169	89	90	82.7	3	560×420×330

Tee (D-DT)



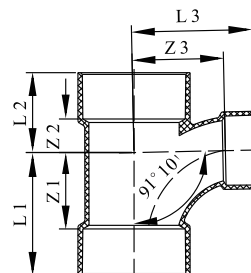
SAP Number	Size (mm)	L1	L2	L3	Z1	Z2	Z3	PCS /CTN	Carton Size (mm×mm×mm)
8020022747	3"×1-1/2"	67	68	70	27	28	48	40	560×420×330
8020022762	3"×2"	74	75	73	34	35	48	36	560×420×330
8020022763	3"×2-1/2"	82	83	83	42	43	48	30	560×420×330
8020022823	4"×2"	84	85	87	34	35	62	20	560×420×330
8020022815	4"×3"	98	99	102	48	49	62	16	560×420×330
8020022847	6"×4"	142	144	138	62	64	88	5	560×420×330

Large Radius Tee (D-LT)



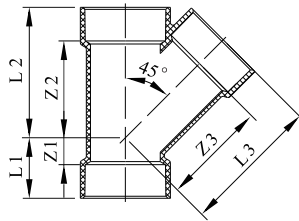
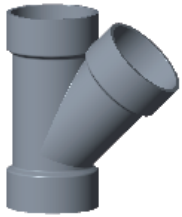
SAP Number	Size (mm)	L1	L2	L3	Z1	Z2	Z3	PCS /CTN	Carton Size (mm×mm×mm)
8020022629	1-1/2"	74	45	74	52	23	52	50	410×280×330
8020022748	2"	91	51	91	66	26	66	64	560×420×330
8020022846	2-1/2"	125	68	125	90	33	90	28	560×420×330
8020022785	3"	140	70	140	100	30	100	18	560×420×330
8020022764	4"	178	95	178	128	45	128	11	560×420×330
8020022881	6"	250	145	250	170	65	170	2	560×420×330

Large Radius Tee (D-LT)



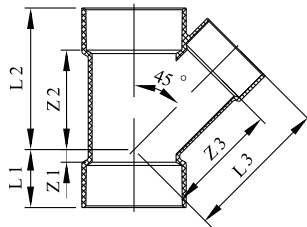
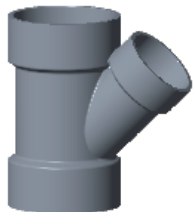
SAP Number	Size (mm)	L1	L2	L3	Z1	Z2	Z3	PCS /CTN	Carton Size (mm×mm×mm)
8020022765	1-1/2"×1-1/4"	59	42	60	37	20	42	50	410×280×330
8020022786	2"×1-1/2"	77	48	79	52	23	57	35	410×280×330
8020022787	2-1/2"×1-1/2"	87	59	88	52	24	66	50	560×420×330
8020022766	2-1/2"×2"	101	62	99	66	27	74	36	560×420×330
8020022749	3"×2"	106	69	104	66	29	79	25	560×420×330
8020022630	3"×2-1/2"	130	72	130	90	32	95	33	410×280×330
8020022655	4"×2"	116	82	115	66	32	90	19	560×420×330
8020022656	4"×3"	150	83	150	100	33	110	8	560×420×330
8020022750	6"×4"	208	133	202	128	53	152	2	560×420×330

Y Branch PVC (D)



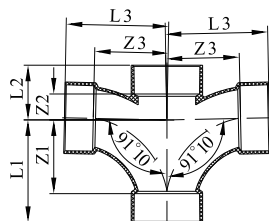
SAP Number	Size (mm)	L1	L2	L3	Z1	Z2	Z3	PCS /CTN	Carton Size (mm×mm×mm)
8020022813	2"	43	101	101	18	76	76	56	410×280×330
8020022821	3"	64	151.5	151.5	24	111.5	111.5	25	410×280×330
8020022790	4"	80	192.5	192.5	30	142.5	142.5	20	560×420×330
8020022636	6"	124	284	290	44	204	290	8	560×420×330
8020022648	1-1/2"	34	80	84	12	58	62	2	560×420×330

Y Branch PVC (D)



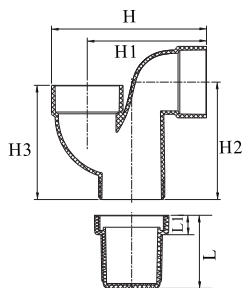
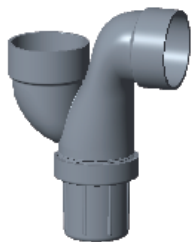
SAP Number	Size (mm)	L1	L2	L3	Z1	Z2	Z3	PCS /CTN	Carton Size (mm×mm×mm)
8020022814	1-1/2"×1-1/4"	30	76	79	8	54	57	60	410×280×330
8020022743	2"×1-1/4"	28	86	87	3	61	69	40	410×280×330
8020022940	3"×2"	43	126	123	3	86	98	25	560×420×330
8020022758	4"×2"	42	148	143	8	98	118	20	560×420×330
8020022791	4"×3"	69	168	172	19	118	132	10	560×420×330
8020022637	6"×4"	84	245	235	6	165	185	4	560×420×330

Large Radius Double Tee (D-WLT)



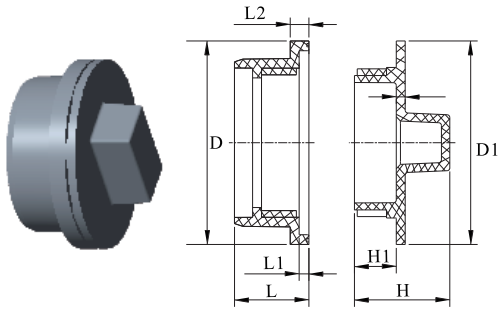
SAP Number	Size (mm)	L1	L2	L3	Z1	Z2	Z3	PCS /CTN	Carton Size (mm×mm×mm)
8020022631	2"×2"	90	51	91	66	26	63.73	20	410×280×330
8020022632	3"×2"	106	69	106	66	29	79	18	560×420×330
8020022824	4"×4"	178	95	178	128	45	124.04	5	560×420×330

P-Trap (D)



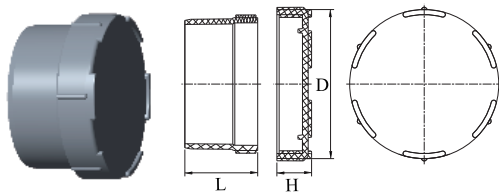
SAP Number	Size (mm)	L	L1	H	H1	H2	H3	PCS /CTN	Carton Size (mm×mm×mm)
8020022917	2"	68.5	18.2	145.2	111.7	110	107	20	410×280×330

Cleanout With Plug (D)



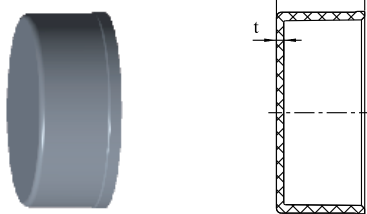
SAP Number	Size (mm)	L	L1	L2	H	H1	D	D1	PCS /CTN	Carton Size (mm×mm×mm)
8020022809	2"	26.7	3.5	6.7	34.2	15	73	73	120	410×280×330
8020022671	3"	39.1	3.5	7.1	42.5	20.5	102.5	102.5	50	410×280×330
8020022672	4"	49	3.5	8	53	28.5	128	128	30	410×280×330

Cleanout With Cap (D)



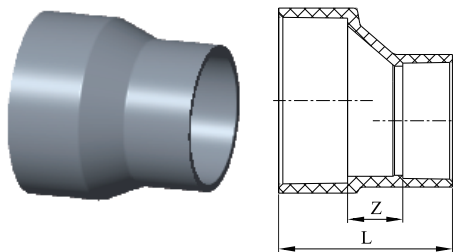
SAP Number	Size (mm)	L	H	D	PCS /CTN	Carton Size (mm×mm×mm)
8020022753	4"	64	30.5	135		

Cap (D)



SAP Number	Size (mm)	L	PCS /CTN	Carton Size (mm×mm×mm)
8020022620	1-1/4"	20.7	480	410×280×330
8020022621	1-1/2"	24.7	350	410×280×330
8020022622	2"	28.1	200	410×280×330
8020022623	3"	43.6	138	560×420×330
8020022654	4"	54.5	36	560×420×330

Increaser (D-IN)



SAP Number	Size (mm)	L	Z	PCS /CTN	Carton Size (mm×mm×mm)
8020022657	1-1/2"×1-1/4"	60	20	150	410×280×330
8020022658	2"×1-1/4"	63	20	120	410×280×330
8020022751	2"×1-1/2"	67	20	96	410×280×330
8020022788	2-1/2"×1-1/2"	77	20	60	410×280×330
8020022659	2-1/2"×2"	80	20	60	410×280×330
8020022660	3"×1-1/2"	87	25	90	560×420×330
8020022661	3"×2"	90	25	33	410×280×330
8020022752	3"×2-1/2"	100	25	72	560×420×330
8020022662	4"×2"	105	30	48	560×420×330
8020022663	4"×2-1/2"	115	30	34	560×420×330
8020022664	4"×3"	120	30	42	560×420×330
8020022665	6"×3"	161	41	16	560×420×330
8020022666	6"×4"	170	40	12	560×420×330

■ Product Overview

- ⊗ **Material:** Random Polypropylene
- ⊗ **Size:** full 16mm through 160mm availability
- ⊗ **Pressure Rating:** 1.25MPa, 1.6MPa, 2.0MPa, 2.5MPa
- ⊗ **Standard:** GB/T 18742-2, EN ISO 15874-2, BS EN ISO 15874-2, DIN8077, DIN8078, NSF/ANSI/CAN 61, NSF/ANSI N372
- ⊗ **Colors:**
 - Green, pipe for cold water is marked with blue stripes, pipe for hot water is marked with red stripes
 - Other colors are also available upon request
- ⊗ **Form Supplied:**
 - 4 meters straight length (all size)
 - 50 or 100 meters coil length (d_n16~d_n32)
 - Other forms are also available upon request



■ Physical Properties

Properties	Typical Value	
Specific Gravity, g/cm ³ (20°C)	0.89 ~ 0.91	
Tensile Strength, MPa	≥20	
Modulus of Elasticity, N/mm ² (20°C)	800	
Thermal Conductivity, w/(m·k) (20°C)	0.23 ~ 0.24	
Coefficient of Linear Expansion, mm/(m·k)	0.14 ~ 0.16	
Longitudinal Reversion, % (135°C, 2h)	≤2	
Hydraulic Pressure Test	20°C, 1h, Hoop Stress is 16MPa	No Failure
	95°C, 1000h, Hoop Stress is 3.5MPa	No Failure
	110°C, 8760h, Hoop Stress is 1.90MPa	No Failure

Note: The plastic fittings should be adopted threaded metal fittings with corrosion resistance when they are intended to connect with metal pipe and water transportation device.

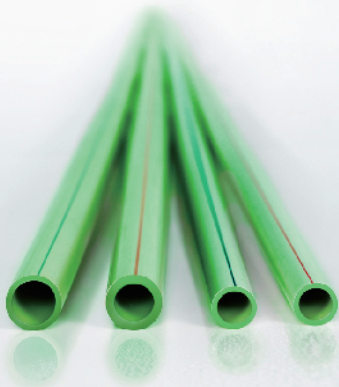
■ Advantages

- ⊗ **High Temperature Resistance:** the maximum sustained working temperature is up to 70°C, the maximum transient temperature is up to 95°C.
- ⊗ **Heat Preservation:** low thermal conductivity which is only 1/1500 of brass pipe, and 1/250 of steel pipe.
- ⊗ **Non-toxic:** no heavy metal additives, would not be covered with dirt or contaminated by bacterium.
- ⊗ **Corrosion Resistance:** resist chemical matters and electron chemical corrosion.
- ⊗ **High Flow Capacity:** smooth interior walls and low friction result in low flow resistance and high volume.
- ⊗ **Excellent Flexibility:** can be supplied in coil.
- ⊗ **Low Installation Costs:** light weight and ease of installation can reduce installation costs
- ⊗ **Longevity:** more than 50 years under proper use
- ⊗ **Recycled and Environment-friendly**

■ Applications

- ⊗ Cold and hot water supply
- ⊗ Heating system including flooring heating, wall heating and radiant system
- ⊗ Central air conditioning system
- ⊗ Industrial liquids transportation

Straight Pipe



S 5 (PN 1.25)

* Suitable for Cold Water Supply

SAP No. (5.8M)	d _n (mm)	e _n (mm)
8010060185	20	2.0
8010060186	25	2.3
8010060187	32	2.9
8010060188	40	3.7
8010060189	50	4.6
8010060190	63	5.8
8010060419	75	6.8
8010061528	90	8.2
8010061527	110	10.0
	125	11.4
8010061526	160	14.6

S 4 (PN 1.6)

* Suitable for Cold Water Supply

SAP No. (5.8M)	d _n (mm)	e _n (mm)
8010060109	16	1.9
8010060111	20	2.3
8010060113	25	2.8
8010060115	32	3.6
8010060117	40	4.5
8010060119	50	5.6
8010060121	63	7.1
8010061148	75	8.4
8010060906	90	10.1
8010060510	110	12.3
	125	14.0
8010061525	160	17.9

S 3.2 (PN 2.0)

* Suitable for Cold or Hot Water Supply

SAP No. (5.8M)	d _n (mm)	e _n (mm)
8010060376	16	2.2
8010060378	20	2.8
8010060379	25	3.5
8010060380	32	4.4
8010060381	40	5.5
8010060383	50	6.9
8010061098	63	8.6
8010061097	75	10.3
8010060999	90	12.3
	110	15.1
	125	17.1
	160	21.9

S 2.5 (PN 2.5)

* Suitable for Cold or Hot Water Supply

SAP No. (5.8M)	d _n (mm)	e _n (mm)
8010060295	20	3.4
8010060296	25	4.2
8010060297	32	5.4
8010060298	40	6.7
8010060299	50	8.3
8010060300	63	10.5
	75	12.5
8010060998	90	15.0
	110	18.3
	125	20.8
	160	26.6

Coil Pipe



S 5 (PN 1.25)

* Suitable for Cold Water Supply

SAP Number (50m)	d _n (mm)	e _n (mm)
8010060899	20	2.0
8010060900	25	2.3
8010060801	32	2.9

S 4 (PN 1.6)

* Suitable for Cold Water Supply

SAP Number (50m)	d _n (mm)	e _n (mm)
	16	1.9
	20	2.3
	25	2.8
	32	3.6

S 3.2 (PN 2.0)

* Suitable for Cold or Hot Water Supply

SAP Number (50m)	d _n (mm)	e _n (mm)
	16	2.2
	20	2.8
	25	3.5
8010060804	32	4.4

S 2.5 (PN 2.5)

* Suitable for Cold or Hot Water Supply

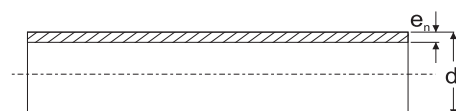
SAP Number (50m)	d _n (mm)	e _n (mm)
8010060901	20	3.4
	25	4.2
8010060902	32	5.4

S: Pipe Series

PN: Nominal Pressure (unit: MPa)

d_n: Nominal Outside Diameter

e_n: Nominal Wall Thickness





■ Features

- ⊗ **Material:** Random Polypropylene
- ⊗ **Size:** full 16mm through 160mm availability
- ⊗ **Pressure Rating:** 2.5MPa, or other nominal pressures available upon request
- ⊗ **Standard:** ISO 15874-3, EN ISO 15874-3, BS EN ISO 15874-3, DIN 16962, GB/T 18742-3
- ⊗ **Colors:** Green or other colors available upon request
- ⊗ **Joint:** Joining pipe and socket joint fittings by socket fusion joint

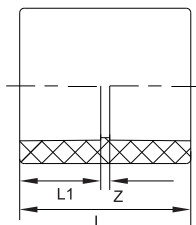
■ Advantages

- ⊗ **High Temperature Resistance:** the maximum sustained working temperature is up to 70°C, the maximum transient temperature is up to 95°C
- ⊗ **Heat Preservation:** low thermal conductivity result in preserving heat
- ⊗ **Non-toxic:** no heavy metal additives, would not be covered with dirt or contaminated by bacterium
- ⊗ **Low Installation Costs:** light weight and ease of installation can reduce installation costs
- ⊗ **High Flow Capacity:** smooth interior walls result in low pressure loss and high volume
- ⊗ **Longevity:** more than 50 years under proper use

Definitions of abbreviated configuration description follow

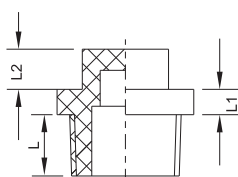
Soc: Socket	Fipt: Female Iron Pipe Thread
Spig: Spigot	Mipt: Male Iron Pipe Thread

Coupling (Soc×Soc)



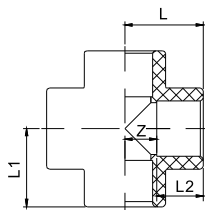
SAP Number	Size (mm)	Z	L1	L	PCS/CTN	Carton Size (mm×mm×mm)
8010070882	16	1	15	31	1200	410x280x330
8010070884	20	1.5	16	33.5	870	410x280x330
8010070885	25	1.5	18	37.5	520	410x280x330
8010070886	32	2	20	42	300	410x280x330
8010070887	40	1.5	22.5	46.5	210	410x280x330
8010070888	50	2	25.5	53	260	560x420x330
8010070889	63	2	29.5	61	150	560x420x330
8010070890	75	2	31.5	65	100	560x420x330
8010070891	90	3.5	36.5	76.5	50	560x420x330
8010070881	110	5	42	89	36	560x420x330
8010070883	160	9	58.5	126	10	560x420x330

Male Thread Plug (Mipt)



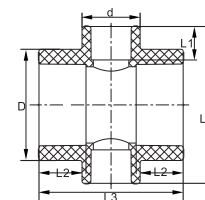
SAP Number	Size (mm)	L	L1	L2	PCS /CTN	Carton Size (mm×mm×mm)
8010070483	1/2"	12	5	9	1200	410x280x330
8010070484	3/4"	14	6	9	900	410x280x330
8010070482	1"	16.5	7	11	420	410x280x330

Cross (Soc×Soc×Soc×Soc)



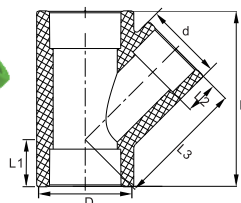
SAP Number	Size (mm)	Z	L1	L	L2	PCS /CTN	Carton Size (mm×mm×mm)
8010070854	20	11	27	27	16	300	410x280x330
8010070855	25	14.8	32.8	32.8	18	192	410x280x330
8010070856	32	17.8	37.8	37.8	20	105	410x280x330
8010070857	40	22.3	44.8	44.8	22.5	63	410x280x330
8010070858	50	27.5	53	53	25.5	60	560x420x330

Reducing Cross (Soc×Soc×Soc×Soc)



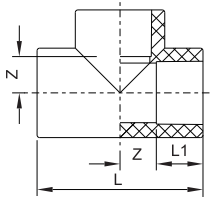
SAP Number	Size (mm)	L	L1	L2	L3	D	d	PCS /CTN	Carton Size (mm×mm×mm)
	40×25	81	18	22.5	74	53.2	33.8		

Reducing Wye (Soc×Soc×Soc)



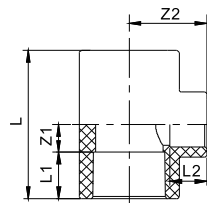
SAP Number	Size (mm)	L	L1	L2	L3	D	d	PCS /CTN	Carton Size (mm×mm×mm)
	50×40	120	32	22.5	88	66.6	53.2		

Tee (Soc×Soc×Soc)



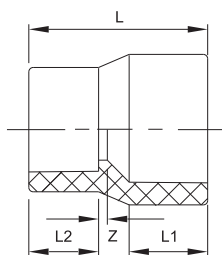
SAP Number	Size (mm)	L1	Z	L	PCS /CTN	Carton Size (mm×mm×mm)
8010070090	16	15	8	46	640	410x280x330
8010070092	20	16	10	54	360	410x280x330
8010070093	25	18	14	64	240	410x280x330
8010070094	32	20	17.8	75.5	140	410x280x330
8010070095	40	22.5	21.5	88	90	410x280x330
8010070096	50	25.5	26.5	104	100	560x420x330
8010070097	63	29.5	32.5	124	60	560x420x330
8010070098	75	31.5	37.8	138.5	30	560x420x330
8010070099	90	37.5	45.5	166	20	560x420x330
8010070089	110	42	55.5	195	12	560x420x330
8010070091	160	58.5	91.5	300	4	560x420x330

Reducing Tee (Soc×Soc×Soc)



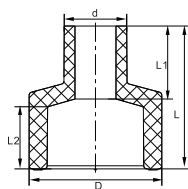
SAP Number	Size (mm)	Z1	Z2	L1	L2	L	PCS /CTN	Carton Size (mm×mm×mm)
8010070166	20×16	8.8	25.5	16	15	49.5	360	410x280x330
8010070167	20×25×20	13.5	29.5	16	18	59	250	410x280x330
8010070168	25×16	8.5	27.5	18	15	53		410x280x330
8010070169	25×20	11.5	29.5	18	16	59	280	410x280x330
8010070170	25×20×20	13	28.5	18	16	59	250	410x280x330
8010070171	32×16	9	30.7	20	15	58	180	410x280x330
8010070172	32×20	12	33.5	20	16	64	160	410x280x330
8010070173	32×25	14	35	20	18	68	150	410x280x330
8010070174	40×20	12	37.5	22.5	16	69	112	410x280x330
8010070175	40×25	14.5	40.5	22.5	18	74	112	410x280x330
8010070176	40×32	17.5	42	22.5	20	80	88	410x280x330
8010070177	50×20	11.3	42.2	25.5	16	73.5	180	560x420x330
8010070178	50×25	13.5	44	25.5	18	78	168	560x420x330
8010070179	50×32	17.5	47.3	25.5	20	86	120	560x420x330
8010070180	50×40	21.5	49.3	25.5	22.5	94	120	560x420x330
8010070181	63×25	13.2	42.5	29.5	18	85.4	96	560x420x330
8010070182	63×32	16.5	55.5	29.5	20	92	96	560x420x330
8010070183	63×40	20.5	54	29.5	22.5	100	80	560x420x330
8010070184	63×50	25.8	56.8	29.5	25.5	110.5	60	560x420x330
8010070185	75×32	17	62	31.5	20	97	60	560x420x330
8010070186	75×40	21	59.5	31.5	22.5	105	50	560x420x330
8010070187	75×50	25.5	62.5	31.5	25.5	114	50	560x420x330
8010070188	75×63	32	67.2	31.5	29.5	127	36	560x420x330
8010070189	90×40	21.3	74	37.5	22.5	117.5	30	560x420x330
8010070190	90×50	26	71.5	37.5	25.5	127	28	560x420x330
8010070191	90×63	32.3	75	37.5	29.5	139.5	28	560x420x330
8010070192	90×75	37.5	77.5	37.5	31.5	150	25	560x420x330
8010070162	110×50	27.8	79.5	42	25.5	139.5	18	560x420x330
8010070163	110×63	33.8	84	42	29.5	151.5	15	560x420x330
8010070164	110×75	39	87.5	42	31.5	162	15	560x420x330
8010070165	110×90	46	91.5	42	37.5	176	14	560x420x330
8010073014	160×110	59	125	58.5	42	235		

Reducer (Soc×Soc)



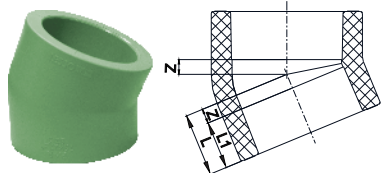
SAP Number	Size (mm)	Z	L1	L2	L	PCS/CTN	Carton Size (mm×mm×mm)
8010070819	20×16	2	16	15	34.5	960	410x280x330
8010070820	25×16	2	18	15	38.5	600	410x280x330
8010070821	25×20	2	18	16	39.5	480	410x280x330
8010070822	32×16	2	20	15	44	300	410x280x330
8010070823	32×20	2	20	16	42.5	420	410x280x330
8010070824	32×25	2	20	18	45	300	410x280x330
8010070825	40×20	2.5	22.5	16	46	252	410x280x330
8010070826	40×25	2	22.5	18	48.5	252	410x280x330
8010070827	40×32	3	22.5	20	50.5	210	410x280x330
8010070828	50×20	1.5	25.5	16	51.5	120	410x280x330
8010070829	50×25	2	25.5	18	52.5	120	410x280x330
8010070830	50×32	2.5	25.5	20	57	120	410x280x330
8010070831	50×40	1.6	25.5	22.5	57.5	120	410x280x330
8010070832	63×25	3	29.5	18	53	120	410x280x330
8010070833	63×32	2	29.5	20	56	100	410x280x330
8010070834	63×40	2	29.5	22.5	57.5	100	410x280x330
8010070835	63×50	2	29.5	25.5	60	150	560x420x330
8010070836	75×32	3	31.5	20	60.5	140	560x420x330
8010070837	75×40	3	31.5	22.5	63	140	560x420x330
8010070838	75×50	3	31.5	25.5	66	140	560x420x330
8010070839	75×63	3	31.5	29.5	68	90	560x420x330
8010070840	90×40	3	37.5	22.5	73	80	560x420x330
8010070841	90×50	2	37.5	25.5	73	80	560x420x330
8010070842	90×63	2.5	37.5	29.5	78	80	560x420x330
8010070843	90×75	2.5	37.5	31.5	80.5	50	560x420x330
8010070814	110×50	3	42	25.5	82.5	50	560x420x330
8010070815	110×63	4	42	29.5	85	45	560x420x330
8010070816	110×75	4	42	31.5	88	50	560x420x330
8010070817	110×90	5.5	42	37.5	94.5	36	560x420x330
8010070818	160×110	3	58.5	42	127	10	560x420x330

Reducing Coupling (Soc×Soc)



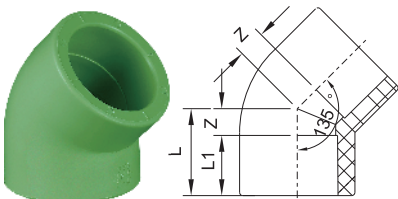
SAP Number	Size (mm)	L	L1	L2	D	d	PCS /CTN	Carton Size (mm×mm×mm)
	25×20	42	22	18	33.8	20.1		
	32×20	46	23.5	20	42.7	20.1		
	40×20	50	25	22.5	53.2	20.1		
	40×25	52	27	22.5	53.2	25.1		
	40×32	58	26	22.5	53.2	32.1		
	50×32	60	29	25.5	66.6	32.1		
	50×40	62	30	25.5	66.6	40.1		

22.5° Elbow (Soc×Soc)



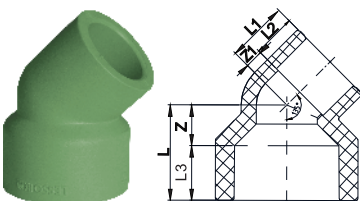
SAP Number	Size (mm)	Z	L1	L	PCS /CTN	Carton Size (mm×mm×mm)
8010072172	20	4	16	20	75	410x280x330
	25	4	18	22		
	32	5.5	20	25.5		
8010072173	40	6	22.5	28.5	40	410x280x330
8010072174	50	7.5	25.5	33		
8010072175	63	8.5	29.5	38	25	410x280x330
8010072176	75	9.5	31.5	41		
8010072177	90	11.5	37.5	49	75	410x280x330
8010072178	110	14.5	42	56.5		
8010072179	160	19.5	58.5	78		

45° Elbow (Soc×Soc)



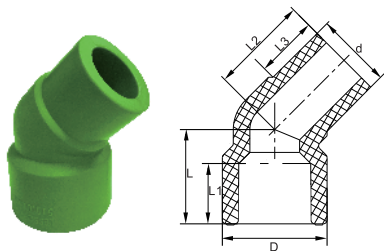
SAP Number	Size (mm)	Z	L1	L	PCS /CTN	Carton Size (mm×mm×mm)
8010070024	16	4	15	19	1000	410x280x330
8010070026	20	6.3	16	22.3	600	410x280x330
8010070027	25	7	18	25	360	410x280x330
8010070028	32	10	20	30	180	410x280x330
8010070029	40	10.5	22.5	33	112	410x280x330
8010070030	50	12	25.5	37.5	140	560x420x330
8010070031	63	14	29.5	43.5	80	560x420x330
8010070032	75	16.5	31.5	48	50	560x420x330
8010070033	90	21.5	37.5	59	30	560x420x330
8010070023	110	25.5	42	67.5	20	560x420x330
8010070025	160	49.5	58.5	108	5	560x420x330

45° Reducing Elbow (Soc×Soc)



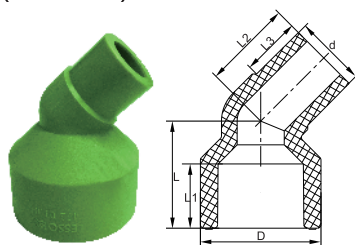
SAP Number	Size (mm)	L	L1	L2	L3	Z	Z1	PCS /CTN	Carton Size (mm×mm×mm)
8010072180	25×20	28	22	16	18	10	6	400	410x280x330
8010072181	32×20	33	22	16	20	13	6	280	410x280x330
8010072182	32×25	32	25	18	20	12	7	280	410x280x330
8010072183	40×20	40	22	16	22.5	17.5	6	180	410x280x330
8010072184	40×25	38	25	18	22.5	15.5	7	168	410x280x330
8010072185	40×32	37	28.5	20	22.5	14.5	8.5	168	410x280x330
8010072248	50×20	48.5	22	16	25.5	23	6		
	50×25	46	25	18	25.5	20.5	7	100	410x280x330
8010072186	50×32	44.5	28.5	20	25.5	19	8.5		
8010072187	50×40	42.5	33	22.5	25.5	17	10.5	80	410x280x330
8010072188	63×25	60	25	18	29.5	30.5	7	80	410x280x330
8010072189	63×32	55	28.5	20	29.5	25.5	8.5		
8010072190	63×40	53	33	22.5	29.5	23.5	10.5	80	410x280x330
8010072191	63×50	50	38	25.5	29.5	20.5	12.5		

45° Elbow (Soc×Soc)



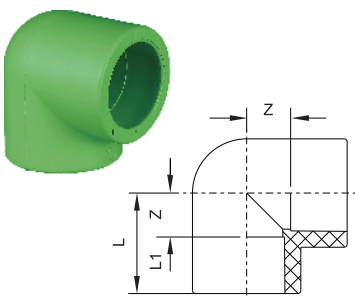
SAP Number	Size (mm)	L	L1	L2	L3	D	d	PCS /CTN	Carton Size (mm×mm×mm)
	20	25	16	26	16.5	27.8	20.1		
	25	30	18	28	18.5	33.8	25.1		
	32	35	20	33	20.5	42.7	32.1		

45° Reducing Elbow (Soc×Soc)



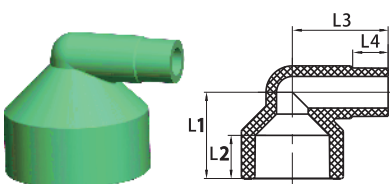
SAP Number	Size (mm)	L	L1	L2	L3	D	d	PCS /CTN	Carton Size (mm×mm×mm)
	25×20	30	18	25	16.5	33.8	20.1		
	32×20	35	20	27	16.5	42.7	20.1		
	32×25	35	20	29	18.5	42.7	25.1		
	40×20	45	22.5	26	16.5	53.2	20.1		
	40×25	42	22.5	30	18.5	53.2	25.1		
	50×20	55	25.5	27	16.5	66.6	20.1		
	50×32	50	25.5	35	20.5	66.6	32.1		
	75×63	67	31.5	50	30	98	63.1		

90° Elbow (Soc×Soc)



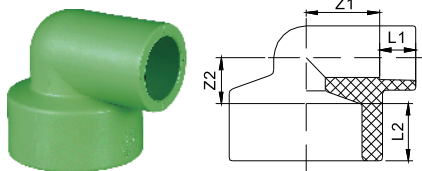
SAP Number	Size (mm)	Z	L1	L	PCS /CTN	Carton Size (mm×mm×mm)
8010070057	16	8	15	23	1000	410x280x330
8010070059	20	11	16	27	480	410x280x330
8010070060	25	13.5	18	31.5	360	410x280x330
8010070061	32	17.5	20	37.5	192	410x280x330
8010070062	40	21	22.5	43.5	96	410x280x330
8010070063	50	26.5	25.5	52	120	560x420x330
8010070064	63	32.5	29.5	62	70	560x420x330
8010070065	75	37.5	31.5	69	40	560x420x330
8010070066	90	44.5	37.5	82	25	560x420x330
8010070056	110	55	42	97	15	560x420x330
8010070058	160	92.5	58.5	151	4	560x420x330

90° Reducing Elbow (SPIG×SOC)



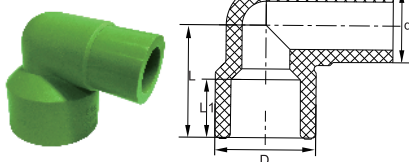
SAP Number	Size (mm)	L1	L2	L3	L4	PCS /CTN	Carton Size (mm×mm×mm)
	32×20						
	32×25						
	40×20	45	22.5	45	16.5		
	40×25	45	22.5	50	18.5		
	50×20	55	25.5	50	16.5		
	50×32						
	50×40						

90° Reducing Elbow (Soc×Soc)



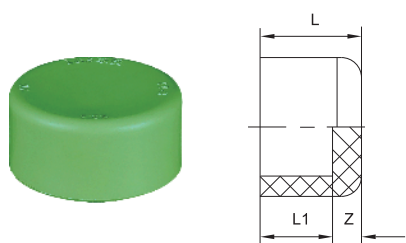
SAP Number	Size (mm)	L1	L2	Z1	Z2	PCS /CTN	Carton Size (mm×mm×mm)
8010070213	25×20	16	18	14	14	360	410x280x330
8010070214	32×20	16	20	19	15	210	410x280x330
8010070215	32×25	18	20	19	17	200	410x280x330
8010070216	40×20	16	22.5	24	17.5	175	410x280x330
8010070217	40×25	18	22.5	25	19.5	120	410x280x330
8010070218	40×32	20	22.5	25	21.5	100	410x280x330
8010070219	50×20	16	25	32	20	96	410x280x330
8010070220	50×25	18	25.5	32	21.5	96	410x280x330
8010070221	50×32	20	25.5	32	26.5	80	410x280x330
8010070222	50×40	22.5	25.5	31.5	26.5	120	410x280x330
8010072192	63×25	18	29.5	27	35.5	130	410x280x330
8010072193	63×32	20	29.5	25	35.5	130	410x280x330
8010072194	63×40	22.5	29.5	27.5	35.5	100	410x280x330
8010072195	63×50	25.5	29.5	29.5	35.5	80	410x280x330

Reducing Coupling (Soc×Soc)



SAP Number	Size (mm)	L	L1	L2	L3	D	d	PCS /CTN	Carton Size (mm×mm×mm)
	32	40	20	47	20.5	42.7	32.1		
	50	55	25.5	65	26	66.6	50.1		

Cap (Soc)



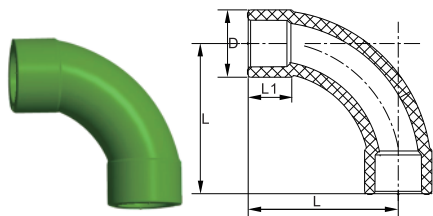
SAP Number	Size (mm)	Z	L1	L	PCS /CTN	Carton Size (mm×mm×mm)
8010070318	16	3	15	18	1800	410x280x330
8010070320	20	4.5	16	20.5	1290	410x280x330
8010070321	25	4.5	18	22.5	900	410x280x330
8010070322	32	6.5	20	26.5	420	410x280x330
8010070323	40	8	22.5	30.5	306	410x280x330
8010070324	50	9.5	25.5	35	180	410x280x330
8010070325	63	12	29.5	41.5	180	560x420x330
8010070326	75	13	31	44	140	560x420x330
8010070327	90	15.5	35.5	51	80	560x420x330
8010070317	110	18	42	60	40	560x420x330
8010070319	160	48.5	58.5	107	14	560x420x330

Rubber Gasket



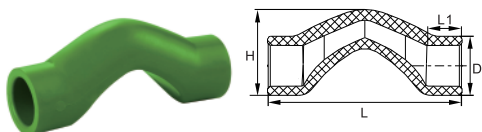
SAP Number	Size (mm)	PCS /CTN	Carton Size (mm×mm×mm)
8010070749	40		
8010070750	50		
8010070751	63		
8010070752	75		
8010070753	90		
8010070747	110		
8010070748	160		

90° Long Sweep bend (Soc×Soc)



SAP Number	Size (mm)	L	L1	D	PCS /CTN	Carton Size (mm×mm×mm)
	20	62	18	27		
	25	68	21	33.8		
	32	75	24.5	42.7		

Bending pipe II (Soc×Soc)



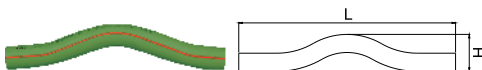
SAP Number	Size (mm)	L	L1	D	H	PCS /CTN	Carton Size (mm×mm×mm)
8010073003	20	91	15.9	27.8	40.4	250	410x280x330
8010073004	25	115	17.5	33.8	49.9	120	410x280x330
8010073015	32	135	20.5	42.7	63.3	80	410x280x330

Bending Pipe (for Cold Water) (Spig×Spig)



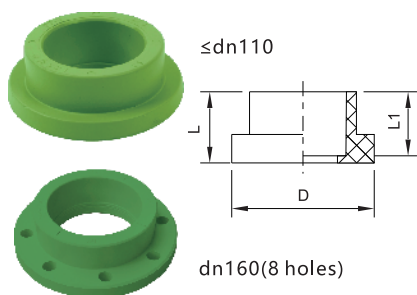
SAP Number	Size (mm)	L	H	PCS /CTN	Carton Size (mm×mm×mm)
8010070466	20	300	47	400	560x420x330
8010070967	25	300	51	250	560x420x330
	32	300	67	150	560x420x330

Bending Pipe (for Hot Water) (Spig×Spig)



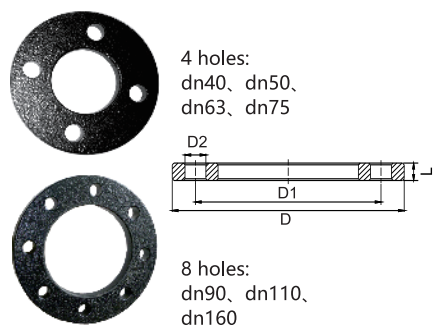
SAP Number	Size (mm)	L	H	PCS /CTN	Carton Size (mm×mm×mm)
8010070473	20	300	47	320	560x420x330
8010070474	25	300	51	250	560x420x330
8010070475	32	300	67	150	560x420x330

Stub Flange (Soc×Flange)



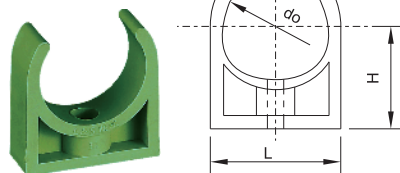
SAP Number	Size (mm)	D	L	L1	PCS /CTN	Carton Size (mm×mm×mm)
8010070255	40	72	26	22.5	160	410x280x330
8010070256	50	85	29	25.5	90	410x280x330
8010070257	63	106	34.5	29.5	60	410x280x330
8010070258	75	129	37	31.5	50	410x280x330
8010070259	90	144	40	34.5	30	410x280x330
8010070253	110	164	50	42	20	410x280x330
8010070254	160	285	85	57.5	10	410x280x330

Flange (Steel Tray)



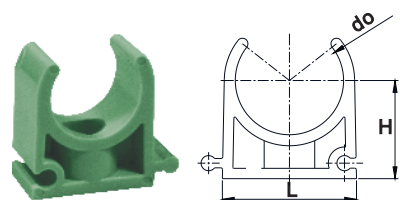
SAP Number	Size (mm)	D	D1	D2	L	PCS /CTN	Carton Size (mm×mm×mm)
8010070234	40	140	100	18	10		
8010070235	50	150	110	18	10		
8010070236	63	160	125	18	12		
8010070237	75	185	145	18	15		
8010070238	90	200	160	18	15		
8010070232	110	220	180	18	15		
8010070233	160	285	240	22	18		

Pipe Clamp



SAP Number	Size (mm)	L	do	H	PCS /CTN	Carton Size (mm×mm×mm)
8010070290	20	27.5	19	22	1080	410x280x330
8010070291	25	32	24.6	24.5	1050	410x280x330
8010070292	32	39	31.5	28.5	840	410x280x330
8010070293	40	47.5	38.5	32	480	410x280x330
8010070294	50	57.5	48.5	37	360	410x280x330

Assembling Clamp



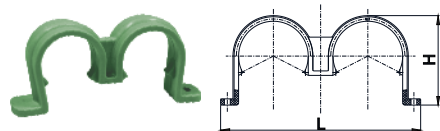
SAP Number	Size (mm)	do	L	H	PCS /CTN	Carton Size (mm×mm×mm)
	16	15	21.5	15		
	20	19	27.4	22	1200	410x280x330
	25	24.6	32	24.5	960	410x280x330
	32	31.5	39	28.5	750	410x280x330

U Clamp



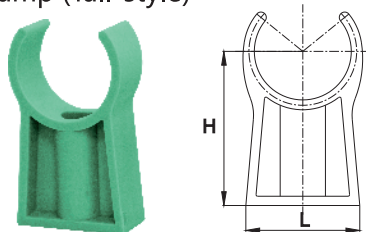
SAP Number	Size (mm)	L	H	PCS /CTN	Carton Size (mm×mm×mm)
8010072338	20	44	28.5	2400	410x280x330
8010072339	25	50.5	34.8		
8010072340	32	57	42.5	1350	410x280x330
8010072341	40	68	52.5		
8010072342	50	78	64		

Double U Clamp



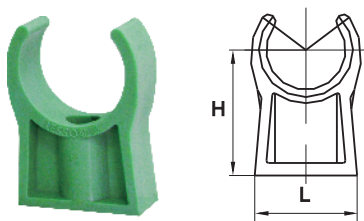
SAP Number	Size (mm)	L	H	PCS /CTN	Carton Size (mm×mm×mm)
	20	72.5	28.5		
	25	85	34.8		
	32	100.5	42.5		
	40	122	52.5		
	50	147.5	64		
	63	178	79.5		

Clamp (Tall-style)



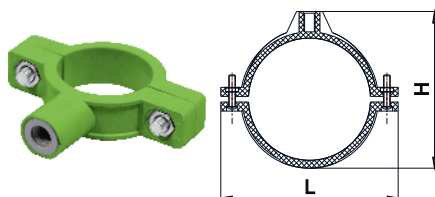
SAP Number	Size (mm)	L	H	PCS /CTN	Carton Size (mm×mm×mm)
8010072169	20	24.5	40		
8010072170	25	30.5	45	540	410x280x330
8010072171	32	37	50		
8010072202	40	46	60		
8010072203	50	60	70		

Clamp (Moderate-style)



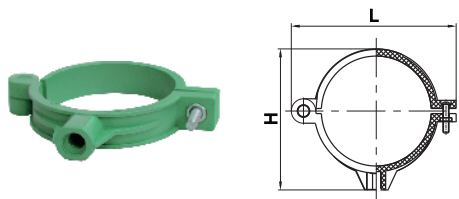
SAP Number	Size (mm)	L	H	PCS /CTN	Carton Size (mm×mm×mm)
	20	24.5	30		
	25	30.5	35		
	32	37	40		
	40	46	45		
	50	60	55		

Pipe Clamp I (without Screw)



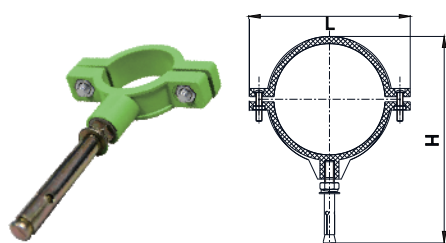
SAP Number	Size (mm)	L	H	PCS /CTN	Carton Size (mm×mm×mm)
8010072052	20	49	42	720	410x280x330
8010072053	25	54	47	720	410x280x330
8010071817	32	64	54	480	410x280x330
2010071818	40	72	62.5	360	410x280x330
8010071819	50	87	73	240	410x280x330
8010071820	63	106	87.5	144	410x280x330
8010072054	75	118.5	101	120	410x280x330
8010072055	90	132	115	120	410x280x330
8010072056	110	157	138.5	70	410x280x330

Pipe Clamp IV (Without Screw)



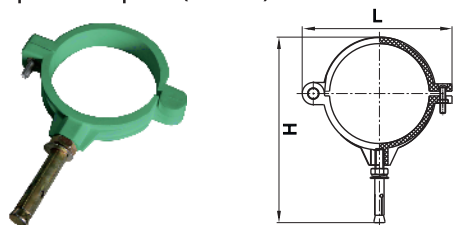
SAP Number	Size (mm)	L	H	PCS /CTN	Carton Size (mm×mm×mm)
	40	72.5	62.5	300	410x280x330
	50	88.5	73	216	410x280x330
	63	105	87.5	120	410x280x330
	75	117.5	101.5	96	410x280x330
	110	162	138.5	60	410x280x330

Pipe Clamp I (Screw)



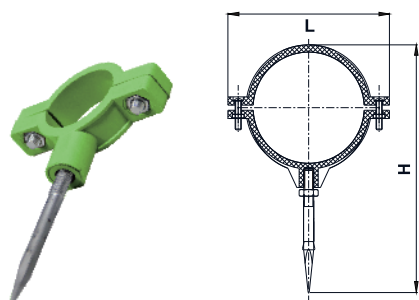
SAP Number	Size (mm)	L	H	PCS /CTN	Carton Size (mm×mm×mm)
8010072204	20	49	96	480	410x280x330
8010072960	25	54	101	450	410x280x330
8010072205	32	64	108	360	410x280x330
8010072206	40	72	116.5	300	410x280x330
8010072207	50	87	127	144	410x280x330
8010072208	63	106	140.5	90	410x280x330
8010072209	75	118.5	154	60	410x280x330
8010072210	90	132	178	90	410x280x330
8010072211	110	157	200.5	60	410x280x330

Pipe Clamp IV (Screw)



SAP Number	Size (mm)	L	H	PCS /CTN	Carton Size (mm×mm×mm)
8010073010	40	72.5	116.5	240	410x280x330
8010073011	50	88.5	127	120	410x280x330
8010073012	63	105	140.5	84	410x280x330
	75	117.5	154	72	410x280x330
	110	162	200.5		

Pipe Clamp I (Tusk Screw)



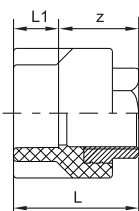
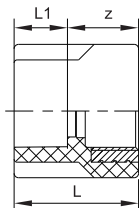
SAP Number	Size (mm)	L	H	PCS /CTN	Carton Size (mm×mm×mm)
8010071831	20	49	96	480	410x280x330
8010072266	25	54	101	450	410x280x330
8010072566	32	64	108	360	410x280x330
8010072567	40	72	116.5	300	410x280x330
8010072568	50	87	137	144	410x280x330
8010072569	63	106	150.5	90	410x280x330
8010072570	75	118.5	164	60	410x280x330
	90	132	218		
	110	157	240.5		

Pipe Clamp IV (Tusk Screw)



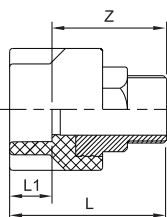
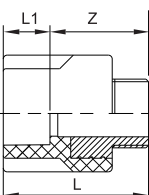
SAP Number	Size (mm)	L	H	PCS /CTN	Carton Size (mm×mm×mm)
	40	72.5	116.5		
	50	88.5	137		
	63	105	150.5		
	75	117.5	164		
	110	162	240.5		

Female Thread Adapter (Soc×Fipt with Metal Insert)



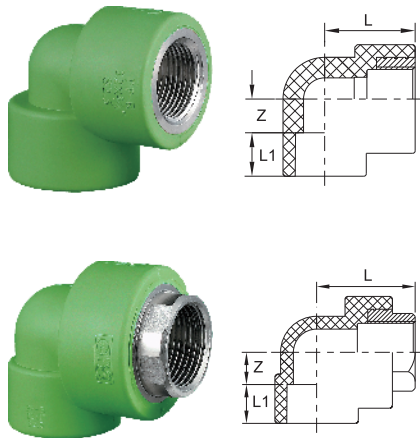
SAP Number	Size (mm)	Z	L1	L	PCS /CTN	Carton Size (mm×mm×mm)
8010070580	16×1/2"	24	15	39	360	410x280x330
8010070581	20×1/2"	26.5	16	42.5	288	410x280x330
8010070582	20×3/4"	26	16	42	240	410x280x330
8010070583	25×1/2"	26.5	18	44.5	300	410x280x330
8010070584	25×3/4"	27	18	45	180	410x280x330
8010070585	32×1/2"	31	20	51	180	410x280x330
8010070586	32×3/4"	27.5	20	47.5	210	410x280x330
8010070607	20×1/2"	34	16	50	300	410x280x330
8010070608	20×3/4"	38.5	16	54.5	192	410x280x330
8010070609	25×3/4"	39.5	18	57.5	180	410x280x330
8010070610	32×1"	38	20	58	96	410x280x330
8010070611	40×1"	37	22	59	84	410x280x330
8010070612	40×1 1/4"	43	22.5	65.5	48	410x280x330
8010070614	50×1 1/4"	41.5	25.5	67	48	410x280x330
8010070613	50×1 1/2"	42.5	25.5	68	36	410x280x330
8010070615	63×2"	46.5	29.5	76	36	410x280x330
8010070616	75×2"	47	31.5	78.5	36	410x280x330

Male Thread Adapter (Soc×Mipt with Metal Insert)



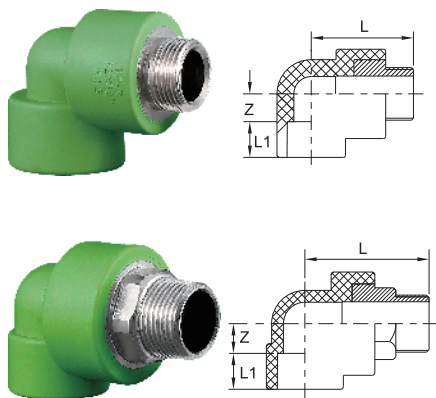
SAP Number	Size (mm)	Z	L1	L	PCS /CTN	Carton Size (mm×mm×mm)
8010070720	16×1/2"	38	15	53	240	410x280x330
8010070721	20×1/2"	38	16	54	240	410x280x330
8010070722	20×3/4"	38	16	54	180	410x280x330
8010070723	25×1/2"	38	18	56	210	410x280x330
8010070724	25×3/4"	38.5	18	56.5	180	410x280x330
8010070725	32×1/2"	45	20	65	180	410x280x330
8010070726	32×3/4"	51.5	20	71.5	180	410x280x330
8010070741	32×1"	57	20	77	72	410x280x330
8010070742	40×1"	56	22	78	72	410x280x330
8010070743	40×1 1/4"	64	22.5	86.5	48	410x280x330
8010070745	50×1 1/4"	62.5	25.5	88	48	410x280x330
8010070744	50×1 1/2"	63.5	25.5	89	36	410x280x330
8010070746	63×2"	71.5	29.5	101	36	410x280x330
8010072254	75×2"	75.5	31.5	107	24	410x280x330

Female Thread Elbow (Soc×Fipt with Metal Insert)



SAP Number	Size (mm)	Z	L	L1	PCS /CTN	Carton Size (mm×mm×mm)
8010070541	16×1/2"	11	35.5	15		
8010070542	20×1/2"	11.5	37.5	16	240	410x280x330
8010070543	20×3/4"	13.1	38.5	16	210	410x280x330
8010070544	25×1/2"	12	40.5	18	210	410x280x330
8010070545	25×3/4"	13	41	18	180	410x280x330
8010070546	32×1/2"	15	42	20	180	410x280x330
8010070547	32×3/4"	18	42	20	150	410x280x330
8010070552	20×1/2"	13	44	16	240	410x280x330
8010070553	32×1"	16.5	54.5	20	72	410x280x330
8010071288	40×1 1/4"	28.5	65	22.5	36	410x280x330
8010071230	50×1 1/2"	32	70	25.5	36	410x280x330
8010072075	63×2"	38	82	29.5	18	410x280x330
	75×2-1/2"	41	77.5	33.5		

Male Thread Elbow (Soc×Mipt with Metal Insert)



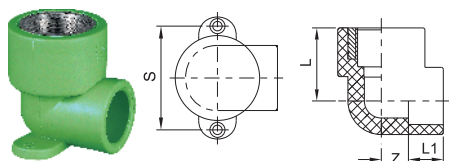
SAP Number	Size (mm)	Z	L	L1	PCS /CTN	Carton Size (mm×mm×mm)
8010070683	16×1/2"	11	49.5	15	240	410x280x330
8010070684	20×1/2"	11.5	49	16	240	410x280x330
8010070685	20×3/4"	13.1	50	16	150	410x280x330
8010070686	25×1/2"	12	52	18	210	410x280x330
8010070687	25×3/4"	17	52.5	18	150	410x280x330
8010070688	32×1/2"	15	56	20	150	410x280x330
8010070689	32×3/4"	18	56	20	120	410x280x330
8010070692	32×1"	21	73.5	20	72	410x280x330
8010071286	40×1 1/4"	28.5	86	22.5	36	410x280x330
8010072076	50×1 1/2"	32	91	25.5	24	410x280x330
8010071874	63×2"	33.5	107	29.5	18	410x280x330
8010072196	75×2 1/2"	41	124.5	31.5	6	410x280x330

Pipe Cover



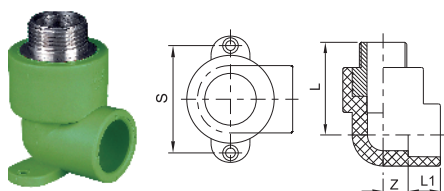
SAP Number	Size (mm)	PCS /CTN	Carton Size (mm×mm×mm)
	16		
8010071231	20		
8010071232	25		
8010071233	32		
	40		
	50		
	63		
	75		
	90		
	110		
	160		

Female Thread Elbow with Seat (Soc×Fipt with Metal Insert)



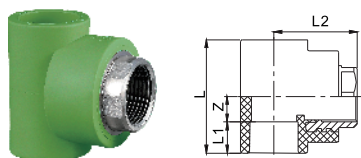
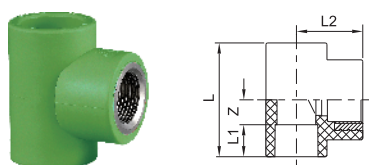
SAP Number	Size (mm)	L	S	L1	Z	PCS /CTN	Carton Size (mm×mm×mm)
8010070562	20×1/2"	38	49.5	16	11.5	168	410x280x330
8010070563	20×3/4"	38.5	53.5	16	13.5	180	410x280x330
8010070564	25×1/2"	39.5	49.5	18	12	180	410x280x330
8010070565	25×3/4"	37.5	53.5	18	13	120	410x280x330

Male Thread Elbow with Seat (Soc×Mipt with Metal Insert)



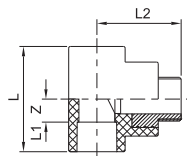
SAP Number	Size (mm)	L	S	L1	Z	PCS /CTN	Carton Size (mm×mm×mm)
8010070701	20×1/2"	47.5	49.5	16	11.5	180	410x280x330
8010070702	20×3/4"	48	49.5	16	13.1	150	410x280x330
8010070703	25×1/2"	50	49.5	18	12	180	410x280x330
8010070704	25×3/4"	50.5	53.5	18	13	120	410x280x330

Female Thread Tee (Soc×Soc×Fipt with Metal Insert)



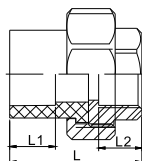
SAP Number	Size (mm)	Z	L2	L1	L	PCS /CTN	Carton Size (mm×mm×mm)
8010070515	20×1/2"	11.5	38	16	55	192	410x280x330
8010070516	20×3/4"	13.5	38.5	16	59	168	410x280x330
8010070517	25×1/2"	12	41	18	60	150	410x280x330
8010070518	25×3/4"	13.5	40.5	18	63	120	410x280x330
8010070519	32×1/2"	11.8	41.5	20	63.5	120	410x280x330
8010070520	32×3/4"	14.5	42	20	69	108	410x280x330
8010070525	20×1/2"	13	44	16	58	180	410x280x330
8010070526	32×1"	16.5	53.5	20	73	60	410x280x330
8010071289	40×1 1/4"	28.5	65	22.5	102	36	410x280x330
8010072197	50×1 1/2"	32	70	25.5	115	24	410x280x330
	63×2"	38	82	29.5	135		
	75×2 1/2"	46	96	31.5	155		

Male Thread Tee (Soc×Soc×Mipt with Metal Insert)



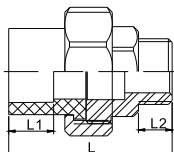
SAP Number	Size (mm)	Z	L2	L1	L	PCS /CTN	Carton Size (mm×mm×mm)
8010070660	20×1/2"	11.5	49.5	16	55	180	410x280x330
8010070661	20×3/4"	13.5	50	16	59	150	410x280x330
8010070662	25×1/2"	12	52.5	18	60	150	410x280x330
8010070663	25×3/4"	13.5	52.5	18	63	120	410x280x330
8010070664	32×1/2"	11.8	56	20	63.5	120	410x280x330
8010070665	32×3/4"	14.5	56	20	69	90	410x280x330
	40×3/4"	15	60	22.5	75		
8010072198	25×1"	22	71.5	18	80		
8010070668	32×1"	16.5	72.5	20	73	60	410x280x330
8010072199	40×1"	21.5	79	22.5	88		
8010071287	40×1 1/4"	28.5	86	22.5	102	24	410x280x330
8010072077	50×1"	19.5	86	25.5	90	24	410x280x330
	50×1 1/4"	27	90	25.5	105		
8010071875	50×1 1/2"	32	91	25.5	115	18	410x280x330
8010072200	63×2"	33.5	107	29.5	126	12	410x280x330
8010072201	75×2 1/2"	41	124.5	31.5	145		

Female Thread Union (Soc×Fipt with Metal)



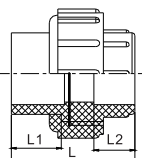
SAP Number	Size (mm)	L1	L2	L	PCS /CTN	Carton Size (mm×mm×mm)
8010070498	20×1/2"	16	16	42	300	410x280x330
8010070500	25×3/4"	18	17	47	180	410x280x330
8010070499	25×1"	18	18	56.5	180	410x280x330
8010070502	32×3/4"	20.5	15	56	120	410x280x330
8010070501	32×1"	20.5	18	52	120	410x280x330
8010072165	40×1 1/4"	22.5	25	51.5	36	410x280x330
8010072309	50×1-1/2"	21.5	26	65.5	48	410x280x330
8010072310	63x2"	24	28	74	24	410x280x330

Male Thread Union (Soc×Mipt with Metal)



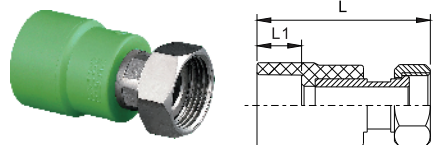
SAP Number	Size (mm)	L1	L2	L	PCS /CTN	Carton Size (mm×mm×mm)
8010070639	20×1/2"	16	14	55	300	410x280x330
8010070641	25×3/4"	18	13.5	60	180	410x280x330
8010070640	25×1"	18	19	45.5	180	410x280x330
8010070643	32×3/4"	20.5	15	42	120	410x280x330
8010070642	32×1"	20.5	19	71	108	410x280x330
8010072166	40×1 1/4"	22.5	19.5	66.5	36	410x280x330
8010072167	50×1-1/2"	21.5	21	71.5	36	410x280x330
8010072168	63x2"	24	24	99	24	410x280x330

Union II (Soc×Soc)



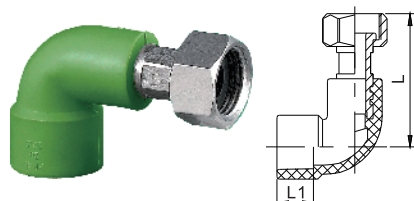
SAP Number	Size (mm)	L1	L2	L	PCS /CTN	Carton Size (mm×mm×mm)
8010070436	20	16	16	45	240	410x280x330
8010070437	25	18	17	48	200	410x280x330
8010070438	32	20.5	18	58	108	410x280x330
8010072953	40	19.3	22.5	71.5	60	410x280x330

Flexible Joint I (Soc×Fipt with Metal)



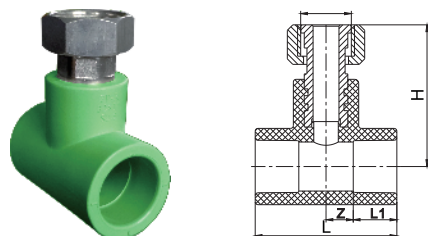
SAP Number	Size (mm)	L	L1	PCS /CTN	Carton Size (mm×mm×mm)
8010070425	20×1/2"	59	16	300	410x280x330
8010070426	20×3/4"	59.5	16	240	410x280x330
8010070427	25×1/2"	61	18	240	410x280x330
8010070428	25×3/4"	62	18	240	410x280x330
8010072221	32×1/2"	63	20		
8010072222	32×3/4"	64	20		
8010070429	32×1"	68.5	20	150	410x280x330
8010072223	40×3/4"	66.5	22.5		
8010072224	40×1"	71	22.5		
8010072225	40×1 1/4"	76	22.5	72	410x280x330
8010072227	50×1"	76.5	25.5		
8010072226	50×1 1/4"	81.5	25.5	60	410x280x330
8010072228	50×1 1/2"	89.5	22.5		

Flexible Joint Elbow (Soc×Fipt with Metal)



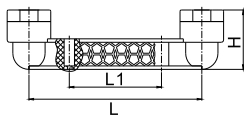
SAP Number	Size (mm)	L	L1	PCS /CTN	Carton Size (mm×mm×mm)
8010070441	20×1/2"	50	16	300	410x280x330
8010072229	20×3/4"	58.5	16	240	410x280x330
8010073626	25×1/2"	50.5	18	240	410x280x330
8010072230	25×3/4"	54.5	18	210	410x280x330
8010072231	32×1/2"	50.5	18	180	410x280x330
8010072232	32×3/4"	54	20	150	410x280x330
8010073631	32×1"	61.5	20	90	410x280x330
8010072233	40×3/4"	53.5	22.5		
8010072234	40×1"	61.5	22.5		
8010072235	40×1 1/4"	71.5	22.5	60	410x280x330
8010072237	50×1"	60.5	25.5		
8010072236	50×1 1/4"	71.5	25.5		
8010072238	50×1 1/2"	86.5	25.5	36	410x280x330

Flexible Tee (Soc×Soc)



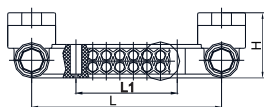
SAP Number	Size (mm)	L1	L	Z	H	PCS /CTN	Carton Size (mm×mm×mm)
8010072239	20×1/2"	16	52	10	52	180	410x280x330
8010072240	20×3/4"	16	57	12.5	52.5		
8010072241	25×1/2"	18	56	10	54	150	410x280x330
8010072242	25×3/4"	18	61	12.5	54.5	120	410x280x330
8010072245	32×1/2"	20	60	10	57.1	120	410x280x330
8010072244	32×3/4"	20	66	13	58.6	96	410x280x330
8010072243	32×1"	20.5	72	15.5	63	90	410x280x330
	40×3/4"	22.5	72	13.5	63		
8010072247	40×1"	22.5	77	16	67.5	60	410x280x330
8010072246	40×1 1/4"	22.5	83	22.5	74.5	48	410x280x330
	50×1"	25.5	84	16.5	73		

Double Female Thread Elbow with Seat (Soc×Fipt with Metal Insert)



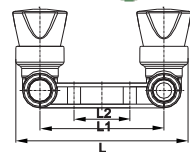
SAP Number	Size (mm)	L1	L	H	PCS /CTN	Carton Size (mm×mm×mm)
8010070628	20×1/2"	80	150	51.5	48	410x280x330
8010071240	25×1/2"	80	150	56.9	48	410x280x330
8010072218	25×3/4"	80	150	57.9	36	410x280x330
8010072219	32×1/2"	80	150	63.4	36	410x280x330
8010072220	32×3/4"	75	150	63.4	24	410x280x330

Double Female Tee With Seat (Soc×Soc×Fipt with Metal Insert)



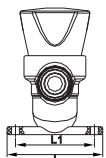
SAP Number	Size (mm)	L1	L	H	PCS /CTN	Carton Size (mm×mm×mm)
8010071806	20×1/2"	80	150	51.4	48	410x280x330
	25×1/2"	80	150	56.9	36	410x280x330
8010072212	32×1/2"	80	150	62.7	24	410x280x330
8010072213	32×3/4"	75	150	63.4	24	410x280x330

Double Angle valve with Seat



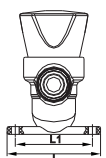
SAP Number	Size (mm)	L	L1	L2	L3	H	D	PCS /CTN	Carton Size (mm×mm×mm)
	20×1/2"	138.8	100	45	68	81.5	R1/2"		

Angle valve with seat (Single Cooling)



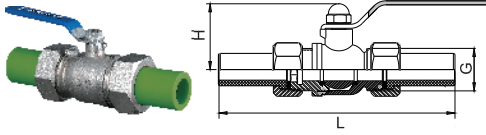
SAP Number	Size (mm)	L	L1	L2	H	D	PCS /CTN	Carton Size (mm×mm×mm)
	20×1/2"	60	49.5	68	81.5	R1/2"		

Angle valve with seat (Single Heat)



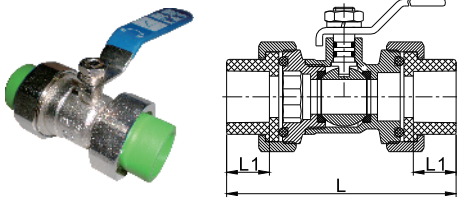
SAP Number	Size (mm)	L	L1	L2	H	D	PCS /CTN	Carton Size (mm×mm×mm)
	20×1/2"	60	49.5	68	81.5	R1/2"		

Ball Valve (Spig×Spig)



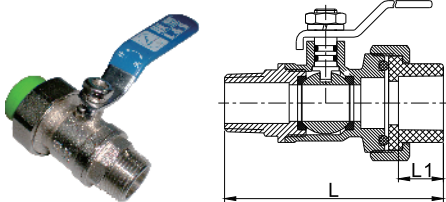
SAP Number	Size (mm)	L	G	H	PCS /CTN	Carton Size (mm×mm×mm)
8010070345	20	142	3/4"	35	96	410x280x330
8010070346	25	153	1"	37	72	410x280x330
8010070347	32	172	1 1/4"	47.5	36	410x280x330

True Union Ball Valve (Soc×Soc)



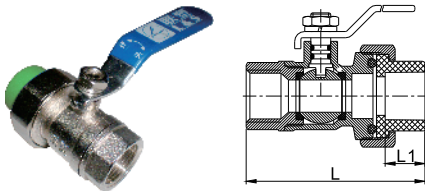
SAP Number	Size (mm)	L1	L	PCS /CTN	Carton Size (mm×mm×mm)
8010070406	20	16	85.8	96	410x280x330
8010070407	25	18	93.8	72	410x280x330
8010070408	32	20	103.2	36	410x280x330
8010071665	40	22.5	120	24	410x280x330
8010071666	50	25.5	133.5	12	410x280x330
8010071667	63	29.5	152.5	6	410x280x330

Male Thread Union Ball Valve (Soc×Mipt with Metal)



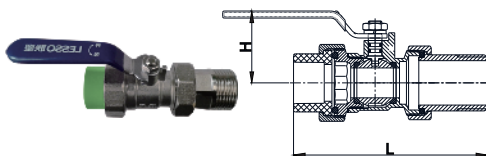
SAP Number	Size (mm)	L1	L	PCS /CTN	Carton Size (mm×mm×mm)
8010070369	20×1/2"	16	77.9	120	410x280x330
8010070370	25×3/4"	18	83.9	96	410x280x330
8010070371	32×1"	20	95.7	48	410x280x330
8010070360	40×1 1/4"	22.5	111.5	30	410x280x330
8010070361	50×1 1/2"	25.5	121	24	410x280x330
8010070362	63×2"	29.5	138.3	12	410x280x330

Female Thread Union Ball Valve (Soc×Fipt with Metal)



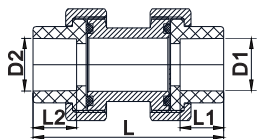
SAP Number	Size (mm)	L1	L	PCS /CTN	Carton Size (mm×mm×mm)
8010070393	20×1/2"	16	71.9	120	410x280x330
8010070394	25×3/4"	18	75.4	72	410x280x330
8010070395	32×1"	20	85.7	48	410x280x330
8010070384	40×1 1/4"	22.5	103.5	24	410x280x330
8010070385	50×1 1/2"	25.5	114	18	410x280x330
8010070386	63×2"	29.5	128.3	12	410x280x330

Long Male Thread Ball Valve (Soc×Mipt with Metal)



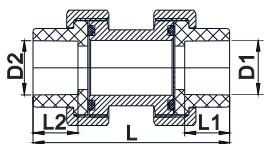
SAP Number	Size (mm)	L	H	PCS /CTN	Carton Size (mm×mm×mm)
	25×1"	113.4	42		
	32×1"	122	54.8		

PP-R/PE-RT Change Union (Soc×Soc)



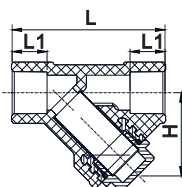
SAP Number	Size (mm)	L	L1	L2	D1	D2	PCS /CTN	Carton Size (mm×mm×mm)
8050040540	20	68.2	16	16	20	20		
8050040542	25	74	18	18	25	25		
8050040544	32	82	20	20	32	32		

PP-R/PE Change Union (Soc×Soc)



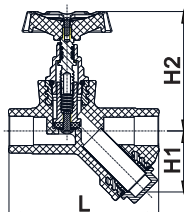
SAP Number	Size (mm)	L	L1	L2	D1	D2	PCS /CTN	Carton Size (mm×mm×mm)
8050040545	20	68.2	16	16	20	20		
8050040546	25	74	18	18	25	25		
8050040547	32	82	20	20	32	32		

Filter (Soc×Soc×Fipt)



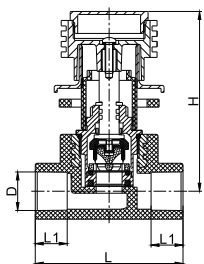
SAP Number	Size (mm)	L1	L	H	PCS /CTN	Carton Size (mm×mm×mm)
	20(2.0MPa)	16	70	38.1	144	410x280x330

Y-style Stop Valve (Soc×Soc×Fipt)



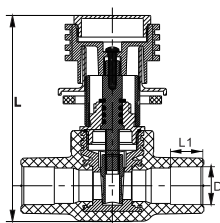
SAP Number	Size (mm)	L	H1	H2	PCS /CTN	Carton Size (mm×mm×mm)
	20(1.6MPa)	98	39.9	78.1	144	410x280x330

Concealed Valve (Soc×Soc)



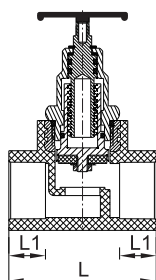
SAP Number	Size (mm)	D	L1	L	H	PCS /CTN	Carton Size (mm×mm×mm)
8010070225	20	20	16	74	90	72	410x280x330
8010070226	25	24.2	18	80	91.5	60	410x280x330
8010070227	32						

Luxury stype concealed valve (Soc × Soc)



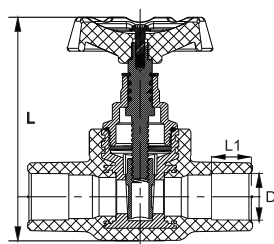
SAP Number	Size (mm)	L	L1	D	PCS /CTN	Carton Size (mm×mm×mm)
8010070225	20	104.7	16.5	19.3		
8010070226	25	112	18.5	24.2		

Stop Valve (Soc×Soc)



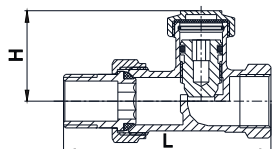
SAP Number	Size (mm)	L	L1	PCS /CTN	Carton Size (mm×mm×mm)
8010070454	20	64	16	72	410x280x330
8010070455	25	74	18	60	410x280x330
8010070456	32	82	20.5	36	410x280x330
8010070457	40	85	22	36	410x280x330
8010070458	50	115	25	30	410x280x330
8010070459	63	121	29	20	410x280x330
8010072950	75 (S4)	129	31.5	12	410x280x330
8010072344	90 (S4)	184.5	37.5		
8010072951	110 (S4)	194	42	5	410x280x330

Concealed valve (Soc×Soc)



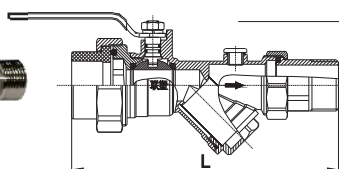
SAP Number	Size (mm)	L	L1	D	PCS /CTN	Carton Size (mm×mm×mm)
	20	92.4	16.5	19.3		
	25	92.4	18.5	24.2		

Straight Type Water Return Valve (Fipt with Metal×Mipt with Metal)



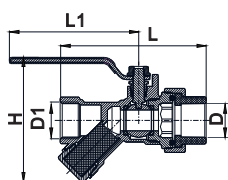
SAP Number	Size (mm)	L	H	PCS /CTN	Carton Size (mm×mm×mm)
8010071147	1/2"	80.5	25		
8010071148	3/4"	83.7	35.5		

Long Male Thread Ball Valve With Strainer (Soc×Mipt with Metal)



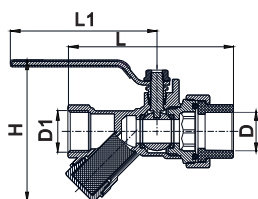
SAP Number (white)	Size (mm)	L	PCS /CTN	Carton Size (mm×mm×mm)
	25×1"	169.5		
	32×1"	171		

Nickel Plated Brass Ball Valve With Strainer 271 (Soc×Fipt with Metal)



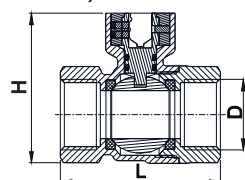
SAP Number	Size (mm)	D	D1	L1	L	H	PCS /CTN	Carton Size (mm×mm×mm)
	25×3/4"	25	3/4"	93	105	89.7		
	32×1"	32	1"	93	128	99.2		

Brass Ball Valve With Strainer 261 (Soc×Fipt with Metal)



SAP Number	Size (mm)	D	D1	L1	L	H	PCS /CTN	Carton Size (mm×mm×mm)
	25×3/4"	25	3/4"	93	105	89.7		
	32×1"	32	1"	93	128	99.2		

Lock Ball Valve (Fipt with Metal×Fipt with Metal)



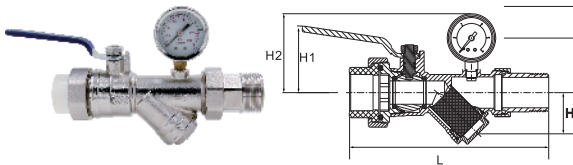
SAP Number	Size (mm)	D	L	H	PCS /CTN	Carton Size (mm×mm×mm)
8010071141	20	3/4"	60	67.3		
8010071142	25	1"	60	67.3		

Lock Ball Valve Key



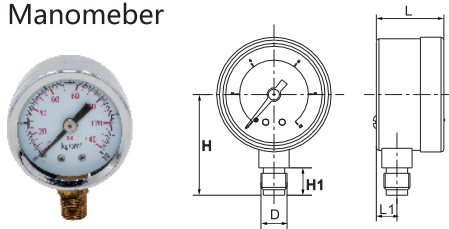
SAP Number	Model	PCS /CTN	Carton Size (mm×mm×mm)
8010071140	F		

Long Male Thread Ball Valve with Strainer (Soc×Mipt with Meter)



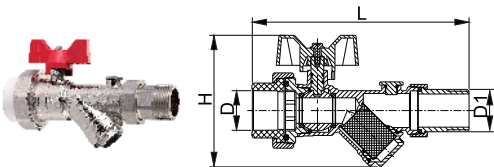
SAP Number	Size (mm)	L	H	H1	H2	PCS /CTN	Carton Size (mm×mm×mm)
	25×1"	169.5	45	46	56.8	36	410x280x330
	32×1"	170.5	45	59	56.8		

Manomeber



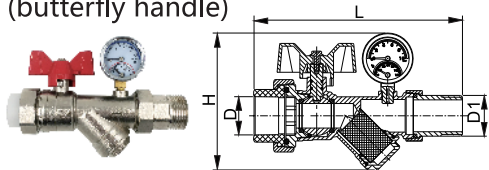
SAP Number	Size (mm)	Dn (mm)	L	L1	H	H1	D	PCS /CTN	Carton Size (mm×mm×mm)
8130054951	G1/8"	40	24.5	7.5	36.5	10	G1/8"	282	410x280x330

Long male thread ball valve with strainer (butterfly handle)



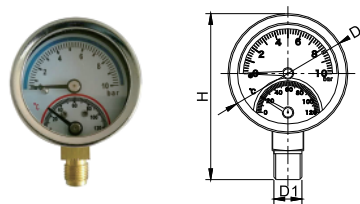
SAP Number	Size (mm)	L	H	D	D1	PCS /CTN	Carton Size (mm×mm×mm)
	25×1"	169	103.2	25	1"		
	32×1"	170	103.2	32	1"		

Long male thread ball valve with strainer meter (butterfly handle)



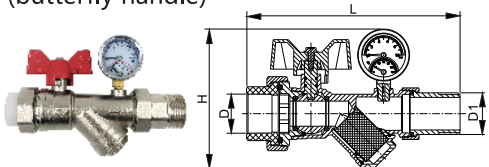
SAP Number	Size (mm)	L	H	D	D1	PCS /CTN	Carton Size (mm×mm×mm)
	25×1"	169	111.7	25	1"		
	32×1"	170	111.7	32	1"		

Temperature gauge manometer



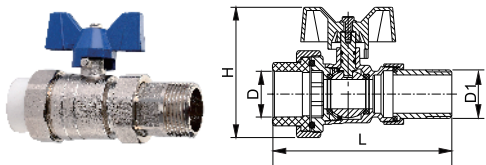
SAP Number	Size (mm)	H	D	D1	PCS /CTN	Carton Size (mm×mm×mm)
8130055612	G1/8"	52	42	G1/8"		

Long male thread ball valve with temperature gauge manometer (butterfly handle)



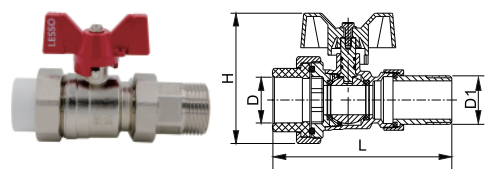
SAP Number	Size (mm)	L	H	D	D1	PCS /CTN	Carton Size (mm×mm×mm)
	25×1"	169	111.7	25	1"		
	32×1"	170	111.7	32	1"		

Long male thread ball valve
(blue butterfly handle)



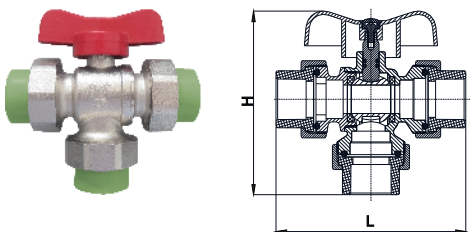
SAP Number	Size (mm)	L	H	D	D1	PCS /CTN	Carton Size (mm×mm×mm)
	25×1"	120.5	82	25	1"		
	32×1"	121.5	88.5	32	1"		

Long male thread ball valve
(Red butterfly handle)



SAP Number	Size (mm)	L	H	D	D1	PCS /CTN	Carton Size (mm×mm×mm)
	25×1"	120.5	82	25	1"		
	32×1"	121.5	88.5	32	1"		

Tee Ball Valve (Soc×Soc×Soc)

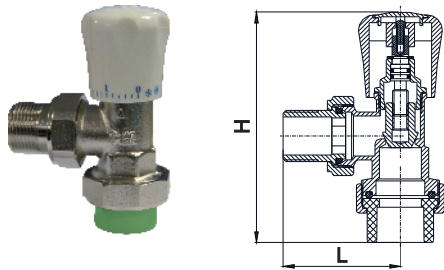


SAP Number	Size (mm)	L	H	PCS /CTN	Carton Size (mm×mm×mm)
	25	113.3	109.5	36	410x280x330

Definitions of abbreviated configuration description follow

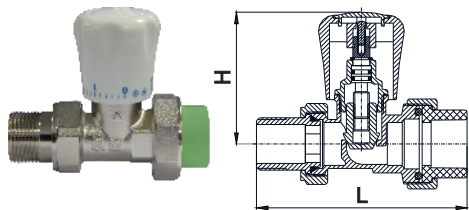
- Soc: Socket
- Fipt: Female Iron Pipe Thread
- Spig: Spigot
- Mipt: Male Iron Pipe Thread

Manual Temperature Control Angle Valve (Soc×Mipt with Metal)



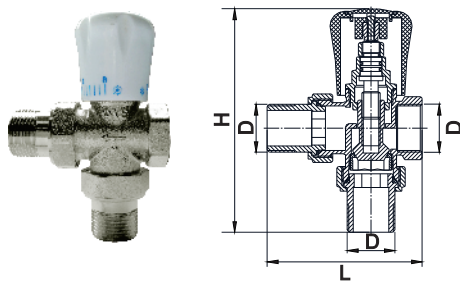
SAP Number	Size (mm)	L	H	PCS /CTN	Carton Size (mm×mm×mm)
	25×3/4"	60	118		
	32×1"	75	132		

Manual Temperature Control Straight Valve (Soc×Mipt with Metal)



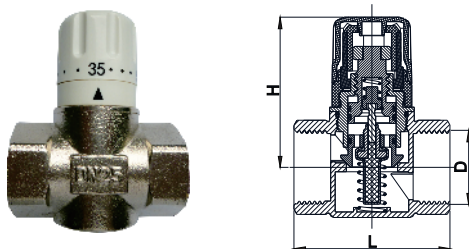
SAP Number	Size (mm)	L	H	PCS /CTN	Carton Size (mm×mm×mm)
8010072343	25×3/4"	105	66		
	32×1"	130	77		

Manual Temperature Control Tee Ball Valve (Mipt with Metal×Mipt with Metal×Fipt with Metal)



SAP Number	Size (mm)	D	L	H	PCS /CTN	Carton Size (mm×mm×mm)
	20	3/4"	85	123		

The User Control Water Temperature Control Valve (Fipt with Metal×Fipt with Metal)

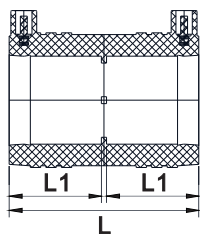


SAP Number	Size (mm)	D	L	H	PCS /CTN	Carton Size (mm×mm×mm)
	25	1"	70	67.3		

Definitions of abbreviated configuration description follow

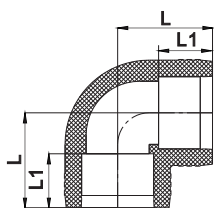
Soc: Socket Fipt: Female Iron Pipe Thread
Spig: Spigot Mipt: Male Iron Pipe Thread

E/F Coupling



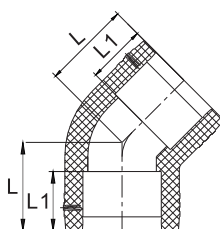
SAP Number	Size (mm)	L1	L	PCS/CTN	Carton Size (mm×mm×mm)
8010071484	50	53.5	110	36	410x280x330
8010071757	63	61.5	126	50	560x420x330
8010071773	75	68.5	140	15	410x280x330
8010072041	90	77.5	158	10	410x280x330
8010071485	110	83.5	170	12	560x420x330
8010072046	160	100.5	204	3	560x420x330

E/F 90° Elbow



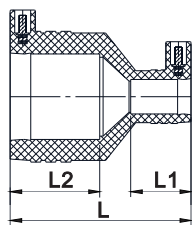
SAP Number	Size (mm)	L1	L	PCS/CTN	Carton Size (mm×mm×mm)
8010071826	75	68.5	113.1	8	410x280x330
8010073605	110	83.5	146.9	6	560x420x330
8010072274	160	100.5	193	1	410x280x330

E/F 45° Elbow



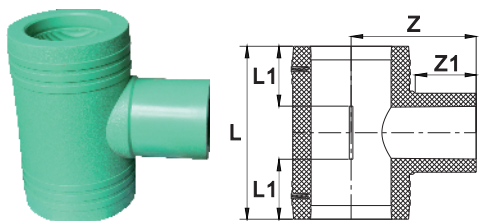
SAP Number	Size (mm)	L1	L	PCS/CTN	Carton Size (mm×mm×mm)
8010071672	40	48	65.4	50	410x280x330
8010072346	75	68.5	98.2	8	410x280x330
8010073606	110	83.5	124.9	6	560x420x330
8010072050	160	100.5	160.7	1	410x280x330

E/F Reducer



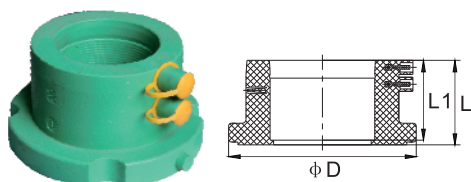
SAP Number	Size (mm)	L1	L	L2	PCS/CTN	Carton Size (mm×mm×mm)
8010071486	40×32	43	107	48	72	410x280x330
8010071673	50×20	36	108	53.5	45	410x280x330
8010072275	50×25	40	112	53.5	36	410x280x330
8010072276	50×32	43	115	53.5	36	410x280x330
8010071774	63×25	40	122	62	28	410x280x330
8010071487	63×32	43	125	62	54	560x420x330
8010071775	63×40	48	130	62	28	410x280x330
8010071827	63×50	53.5	136	62	42	560x420x330
8010071488	75×32	43	134	69	21	410x280x330
8010072153	75×40	48	139	69	15	405x280x330
8010072154	75×50	53.5	145	69	15	405x280x330
8010071776	75×63	62	153	69	14	410x280x330
8010071674	90×63	62	165	78	10	410x280x330
8010072042	110×63	62	174	84	20	560x420x330
8010071490	110×75	69	181	84	12	560x420x330
8010072160	110×90	78	190	84	12	560x420x330
8010073617	160×90	78	223	100	2	410x280x330
8010072047	160×110	84	232	100	2	410x280x330

E/F Tee



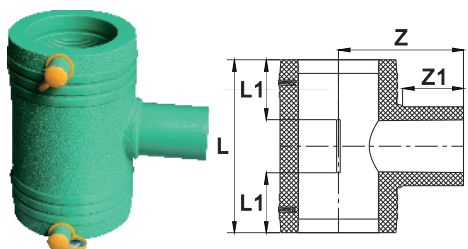
SAP Number	Size (mm)	L1	L	Z1	Z	PCS/CTN	Carton Size (mm×mm×mm)
8010072297	63	61.5	165	63	116	18	560x420x330
8010072260	75	68.5	187	70	133	15	560x420x330
8010071828	90	77.5	215	79	153	4	410x280x330
8010073628	110	83.5	241	85	174.5	5	560x420x330
8010072048	160	100	313	100	237	2	560x420x330

E/F Stub Flange



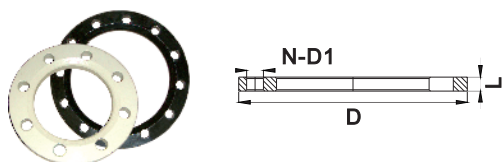
SAP Number	Size (mm)	L1	L	D	PCS/CTN	Carton Size (mm×mm×mm)
8010072557	90	79	87	170	24	560x420x330

E/F Reducing Tee



SAP Number	Size (mm)	L1	L	Z1	Z	PCS/CTN	Carton Size (mm×mm×mm)
8010071830	40×25	48	113	41	76	60	410x280x330
8010072080	63×25	61.5	140	41	92.5	15	410x280x330
8010072060	75×32	68.5	158	44	104.5	12	410x280x330
8010072061	75×40	68.5	164	49	110	24	560x420x330
8010072573	75×50	68.5	171	55	117	9	410x280x330
8010071758	75×63	68.5	179	63	125	9	410x280x330
8010071777	90×40	77.5	182	49	121	15	560x420x330
8010071778	90×50	77.5	189	55	128	8	410x280x330
8010072081	90×63	77.5	197	63	136	6	410x280x330
8010071829	90×75	77.5	205	70	144	5	410x280x330
8010071759	110×63	83.5	209	63	150.5	4	410x280x330
8010073629	110×90	83.5	227	79	167.5	5	560x420x330
8010071779	160×63	100	242	63	187	3	560x420x330
8010072574	160×75	100	250	70	195	2	410x280x330
8010072558	160×90	100	250	79	204	2	410x280x330
8010072051	160×110	100	274	85	212	2	560x420x330

E/F Flange(Steel Tray)



SAP Number	Size (mm)	N	D1	L	D	PCS/CTN	Carton Size (mm×mm×mm)
8010072559	90	8	18	15	220		

Definitions of abbreviated configuration description follow

E/F: Electro Fusion

Pipe Cutter



SAP Number	Model	Application Range	PCS /CTN	Carton Size (mm×mm×mm)
8050040435		16~32	40	410x280x330

Socket Fusion Welding Machine



SAP Number	Model	Application Range	Carton Size (mm×mm×mm)
8010070922	1000w	20-63	
8010070923	1600w	75-110	
8010070924	2500w	160	

Welding Socket



SAP Number	Model	Application Range	Carton Size (mm×mm×mm)
8010070329		16	
8010070331		20	
8010070332		25	
8010070333		32	
8010070334		40	
8010070335		50	
8010070336		63	
8010070337		75	
8010070338		90	
8010070328		110	
8010070330		160	

Manual Peeling Tool (Especially for PP-R / Aluminum Composite Pipe)



SAP Number	Model	Application Range	Carton Size (mm×mm×mm)
8010090025		20-25	
8010090024		32-40	

Assistant Tool for Socket Fusion



SAP Number	Model	Application Range	Carton Size (mm×mm×mm)
8010070976		90-160	

Electric Peeling Tool
(Especially for PP-R / Aluminum
Composite Pipe)



SAP Number	Model	Application Range	Carton Size (mm×mm×mm)
8010090014		40	
8010090015		50	
8010090007		63	

Blade for Peeling Tool



SAP Number	Model	Application Range	Carton Size (mm×mm×mm)
8010090016		20-63	

LS/75-110S Series plastic-aluminum
stable composite pipe's manual
peeling tool



Hub



Sleeve




Nicker

SAP Number (Hub)	SAP Number (Sleeve)	SAP Number (Nicker)	Ring Stiffness	Application Range	Carton Size (mm×mm×mm)
8010090033	8010090042	8010090051	S4	75	
8010090030	8010090039	8010090048	S3.2	75	
8010090027	8010090036	8010090045	S2.5	75	
8010090034	8010090043	8010090052	S4	90	
8010090031	8010090040	8010090049	S3.2	90	
8010090028	8010090037	8010090046	S2.5	90	
8010090032	8010090041	8010090050	S4	110	
8010090029	8010090038	8010090047	S3.2	110	
8010090026	8010090035	8010090044	S2.5	110	

Flexible Coupling

	SAP Number	Size(mm)	PCS/CTN
Size: 16, 20	8030020140	16	900
	8030020141	20	500
	8030020142	25	320
Size: ≥25	8030020143	32	200
	8030020144	40	120
	8030020366	50	65


Reducer

	SAP Number	Size(mm)	PCS/CTN
	8030020270	20×16	600
	8030020271	25×20	480
	8030020272	32×20	264
	8030020273	32×25	264
	8030020274	40×25	170
	8030020275	40×32	150
	8030020276	50×32	100
	8030020277	50×40	80


Flexible Reducer

	SAP Number	Size(mm)	PCS/CTN
Size: 16, 20	8030020155	20×16	600
	8030020398	25×16	
	8030020399	25×20	
Size: ≥25	8030020400	32×16	
	8030020401	32×20	
	8030020402	32×25	


External Quick Connect(for corrugated conduit)

	SAP Number	Size(mm)	PCS/CTN
	8030021423	16	
	8030021233	20	
	8030021446	25	
	8030021443	40	
	8030021463	50	


Water-sealed Flexible Coupling

	SAP Number	Size(mm)	PCS/CTN
	8030021251	20	
	8030021252	25	


Corrugated Conduit/Conduit Change Union

	SAP Number	Size(mm)	PCS/CTN
	8030021456	16	
	8030021424	20	
	8030021452	25	


Quick Connection Male Adapter(for corrugated conduit)

	SAP Number	Size(mm)	PCS/CTN
	8030021409	20	
	8030021444	25	


45° Elbow

	SAP Number	Size(mm)	PCS/CTN
	8030021230	20	
	8030021231	25	
	8030021212	32	
	8030021213	40	
	8030021471	50	

Tee

	SAP Number	Size(mm)	PCS/CTN
	8030020170	16	300
	8030020171	20	210
	8030020172	25	130
	8030020173	32	70
	8030020174	40	40
	8030020175	50	25
	8030020176	60	

90° Elbow

	SAP Number	Size(mm)	PCS/CTN
	8030020206	16	500
	8030020207	20	350
	8030020208	25	160
	8030020209	32	90
	8030020210	40	50
	8030020211	50	35
	8030020212	60	20



PVC Conduit (Grade A)

SAP No. (plain end/2.9M)	SAP No. (belled end/2.9M)	Size(mm)	Wall Thickness	Pack Qty
8030050003	8030050876	16	1.5	35
8030050011	8030050877	20	1.8	25
8030050020		25	2.0	20
8030050026		32	2.2	10
8030050409		40	2.3	10
8030050410	8030051052	50	2.3	5

PVC Conduit (Grade B)

SAP No. (plain end/2.9M)	SAP No. (belled end/2.9M)	Size(mm)	Wall Thickness	Pack Qty
8030050055	8030050798	16	1.3	35
8030050068	8030050136	20	1.4	25
8030050080	8030050138	25	1.6	20
8030050090	8030050800	32	1.9	10
8030050101	8030050967	40	2.0	10
8030050110	8030050801	50	2.2	5

PVC Corrugated Conduit

SAP Number	Size(mm)	Length (m/coil)
8030020306	16	100
8030020311	20	100
8030020320	25	100
8030020331	32	50
8030020335	40	50
8030020337	50	25

Note:

The Grade A and Grade B is the classification code according to the mechanical requirements under specified tests (resistance to compression, resistance to impact, collapse resistance etc.). Grade A is Heavy and Grade B is Medium according to IEC 61386-21, IEC 61386-23.



Coupling



SAP Number	Size(mm)	PCS/CTN
8030020287	16	900
8030020288	20	500
8030020289	25	300
8030020290	32	150
8030020291	40	100
8030020292	50	72
8030020293	60	50

Male Adapter(for corrugated conduit)II



SAP Number	Size(mm)	PCS/CTN
8030021225	20	350

Male Adapter (for corrugated conduit)



SAP Number	Size(mm)	PCS/CTN
8030020350	16	560
8030020351	20	350
8030020352	25	200
8030020353	32	140

Change Union(for corrugated conduit)



SAP Number	Size(mm)	PCS/CTN
8030020790	20	350

90° Long Sweep Bend



SAP Number	Size(mm)	PCS/CTN
8030020621	16	500
8030020202	20	250
8030020203	25	130
8030020204	32	60
8030020205	40	40
8030040024	50	25

Elbow with Cover



SAP Number	Size(mm)	PCS/CTN
8030020391	16	300
8030020221	20	200
8030020222	25	125
8030020223	32	60
8030020224	40	40
8030020225	50	25

Extended Long Sweep Bend



SAP Number	Size(mm)	PCS/CTN
8030021469	16	
8030021232	20	
8030021470	25	

Tee with Cover



SAP Number	Size(mm)	PCS/CTN
8030020392	16	120
8030020185	20	80
8030020186	25	60
8030020187	32	30
8030020580	40	20
8030020581	50	11

Bending Elbow



SAP Number	Size(mm)	PCS/CTN
8030021445	16	
8030021462	20	
8030021464	25	

45° Tee with Cover



SAP Number	Size(mm)	PCS/CTN
8030021401	16	
8030021402	20	
8030021294	25	

Assembling Audio Video Gang Box



SAP Number	Size(mm)	PCS/CTN
8030021256	81×81/ø50	

1 Way Terminal Box (with cover)



SAP Number	Size(mm)	H	PCS/CTN
8030020231	65×40/1/16	40	60
8030020232	65×40/1/20	40	60
8030020233	65×40/1/25	40	60

1 Way Deep Terminal Box (concealed installation)



SAP Number	Size(mm)	H	PCS/CTN
8030020112	65×65/1/16	65	30
8030020113	65×65/1/20	65	30
8030020114	65×65/1/25	65	30
8030020558	65×70/1/16	70	30
8030020378	65×70/1/20	70	30
8030020368	65×70/1/25	70	30

2 Way Through Box (with cover)



SAP Number	Size(mm)	H	PCS/CTN
8030020256	65×40/2/16	40	50
8030020257	65×40/2/20	40	50
8030020258	65×40/2/25	40	50

2 Way Deep Through Box (concealed installation)



SAP Number	Size(mm)	H	PCS/CTN
8030020267	65×65/2/16	65	30
8030020268	65×65/2/20	65	30
8030020269	65×65/2/25	65	30
8030020561	65×70/2/16	70	30
8030020380	65×70/2/20	70	30
8030020381	65×70/2/25	70	30

2 Way Angle Box (with cover)



SAP Number	Size(mm)	H	PCS/CTN
8030020239	65×40/2L/16	40	50
8030020240	65×40/2L/20	40	50
8030020241	65×40/2L/25	40	50

2 Way Deep Angle Box (concealed installation)



SAP Number	Size(mm)	H	PCS/CTN
8030020115	65×65/2L/16	65	30
8030020116	65×65/2L/20	65	30
8030020117	65×65/2L/25	65	25
8030020560	65×70/2L/16	70	30
8030020379	65×70/2L/20	70	30
8030020367	65×70/2L/25	70	25

3 Way Tee Box (with cover)



SAP Number	Size(mm)	H	PCS/CTN
8030020191	65×40/3/16	40	50
8030020192	65×40/3/20	40	50
8030020193	65×40/3/25	40	40

3 Way Deep Tee Box (concealed installation)



SAP Number	Size(mm)	H	PCS/CTN
8030020167	65×65/3/16	65	30
8030020168	65×65/3/20	65	30
8030020169	65×65/3/25	65	25
8030020559	65×70/3/16	70	30
8030020382	65×70/3/20	70	30
8030020383	65×70/3/25	70	25

4 Way Cross Box (with cover)



SAP Number	Size(mm)	H	PCS/CTN
8030020247	65×40/4/16	40	50
8030020248	65×40/4/20	40	40
8030020249	65×40/4/25	40	35

4 Way Deep Cross Box (concealed installation)



SAP Number	Size(mm)	H	PCS/CTN
8030020118	65×65/4/16	65	25
8030020119	65×65/4/20	65	25
8030020120	65×65/4/25	65	25
8030020121	65×70/4/16	70	25
8030020122	65×70/4/20	70	25
8030020123	65×70/4/25	70	25

Gang Box (with active foot,concealed installation)



SAP Number	Size(mm)	H	PCS/CTN
8030020044	77×77/20	38	40
8030020046	77×77/20 25	38	40



8030020045	77×77/20	48	35
8030020047	77×77/20 25	48	35

Gang Box (with active foot,concealed installation)



SAP Number	Size(mm)	H	PCS/CTN
8030020062	77×77/20	56	30
8030020064	77×77/20 25	56	30



8030020063	77×77/20	70	30
8030020065	77×77/20 25	70	30

Gang Box (with active foot,concealed installation)



SAP Number	Size(mm)	H	PCS/CTN
8030020052	164×77/16×2 20 25	38	22

Gang Box (with active foot,concealed installation)



SAP Number	Size(mm)	H	PCS/CTN
8030020054	164×77/20×2 25×2	50	18

Gang Box (with active foot,concealed installation)



SAP Number	Size(mm)	H	PCS/CTN
8030020055	141×80/20	50	22

Deeper Assembling Gang Box (through reinforcement type,concealed installation)



SAP Number	Size(mm)	H	PCS/CTN
8030020066	81×81/20	50	35
8030021130	81×81/25	50	
8030021293	81×81/Φ20Φ25 50		
8030021299	81×81/Φ20	60	
8030021301	81×81/Φ25	60	
8030021300	81×81/Φ20Φ25 60		

Gang Box (with Active Foot, Conncealed Installation)



SAP Number	Size(mm)	H	PCS/CTN
8030020053	255×75/20×2 25×2	50	12

Insert Reinforce Lengthened Assembling Gang Box (through reinforcement type,concealed installation)



SAP Number	Size(mm)	H	PCS/CTN
8030020917	77×77/20	60	32
8030020864	77×77/20	70	27
8030020865	77×77/20 25	70	27
8030020866	77×77/25	70	27

Gang Box (surface installation)



SAP Number	Size(mm)	H	PCS/CTN
8030020071	86×86/20 25	40	40
8030021168	86×86/20	40	36
8030020070	86×86/20	54	30
8030020072	86×86/20 25	54	30



8030021110	86×86/20	32	36
------------	----------	----	----

Gang Box (surface installation)



SAP Number	Size(mm)	H	PCS/CTN
8030020068	86×86/20	46	36
8030020069	86×86/20 25	46	36

Transfer Frame



SAP Number	Size(mm)	H	PCS/CTN
8030020388	77×77	22	91

Gang Box (through reinforcement type, concealed installation)



SAP Number	Size(mm)	H	PCS/CTN
8030020056	77×77/20	50	37
8030020057	77×77/20	60	32
8030020058	77×77/20	70	
8030021176	77×77/25	70	
8030020562	77×77/20 25	50	37
8030020059	77×77/20 25	60	32
8030020060	77×77/20 25	70	

Deeper Assembling Gang Box (type III, concealed installation)



SAP Number	Size(mm)	H	PCS/CTN
8030021094	81×81/20 20	50	
8030021095	81×81/20 25	50	
8030021109	81×81/20 20	45	
8030021551	81×81/Φ20Φ20	60	
8030021285	81×81/Φ20Φ25	60	
8030021558	81×81/Φ20Φ25	70	

Gang Box (through reinforcement type, concealed installation)



SAP Number	Size(mm)	H	PCS/CTN
8030020618	77×77/20	70	
8030020619	77×77/20 25	70	
8030020918	77×77/20	60	
8030020919	77×77/20 25	60	

Gang Box (with metal feet, concealed installation)



SAP Number	Size(mm)	H	PCS/CTN
8030021083	77×77	50	
8030020867	100×65	50	
8030021528	135×65	50	
8030021529	181×65	50	

Gang Box (type III, concealed installation)



SAP Number	Size(mm)	H	PCS/CTN
8030020617	77×77/20	50	50

Rib-piercing Deeper Assembling Gang Box (through reinforcement type, concealed installation)



SAP Number	Size(mm)	H	PCS/CTN
8030021235	77×77/20	70	
8030021236	77×77/20 25	70	
8030021237	77×77/25	70	

Gang Box (through reinforcement type, concealed installation)



SAP Number	Size(mm)	H	PCS/CTN
8030020620	141×80/20	50	22
8030020663	164×77/16 20 25	38	22
8030020664	164×77/20 25	50	18

Rib-piercing Lengthened Assembling Gang Box (through reinforcement type, concealed installation)



SAP Number	Size(mm)	H	PCS/CTN
8030021548	77×77/Φ20	70	
8030021549	77×77/Φ20Φ25	70	
8030021550	77×77/Φ25	70	

Assembling Gang Box (type III-1, concealed installation)



SAP Number	Size(mm)	H	PCS/CTN
8030021210	86×86/20 25	50	

Assembling Gang Box(with active foot)



SAP Number	Size(mm)	H	PCS/CTN
8030021422	81×81/Φ20	40	

Positioning Assembly Gang Box (through reinforcement type, concealed installation)



SAP Number	Size(mm)	H	PCS/CTN
8030021397	81×81/Φ20	70	
8030021398	81×81/Φ20Φ25	70	
8030021399	81×81/Φ25	70	
8030021552	81×81	70	

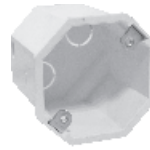
Water-sealed Gang Box (through reinforcement type)



SAP Number	Size(mm)	H	PCS/CTN
8030021554	81×81/Φ20	50	
8030021555	81×81/Φ20Φ25	50	
8030021556	81×81/Φ20	60	
8030021557	81×81/Φ20Φ25	60	

Note: If better water sealing effect is needed, please use it with the water-sealed flexible coupling.

Gang Box (through reinforcement type, with 8 active feet, concealed installation)



SAP Number	Size(mm)	H	PCS/CTN
8030020661	77×77/20	70	38
8030020662	77×77/25	70	
8030020763	77×77/20	60	
8030020764	77×77/25	60	

Rib-piercing Gang Box (through reinforcement type, with 8 active feet, concealed installation)



SAP Number	Size(mm)	H	PCS/CTN
8030020041	77×77/20	50	45
8030020042	77×77/20	60	40
8030020043	77×77/20	70	38
8030020557	77×77/20 25	70	
8030020851	77×77/25	70	

Gang Box Cover



Size:75×75~86×86



Size:100×75~172×86

SAP Number	Size(mm)	PCS/CTN
8030020387	75×75	340
8030020920	77×77	250
8030020369	86×86	230
8030020384	100×75	
8030020385	147×86	160
8030020386	164×77	160
8030020733	172×86	

Box Cover



SAP Number	Size(mm)	PCS/CTN
8030020255	65	600

Box Cover(with 8 active feet)



SAP Number	Size(mm)	PCS/CTN
8030021196	77×77	

Clamp



SAP Number	Size(mm)	PCS/CTN
8030020126	16	2000
8030020127	20	1000
8030020128	25	900
8030020129	32	500
8030020130	40	300
8030020131	50	210

Hook Clamp



SAP Number	Size(mm)	PCS/CTN
8030021494	16	
8030021194	20	
8030021195	25	
8030021211	32	

Assembling Clamp



SAP Number	Size(mm)	PCS/CTN
8030020420	16	1800
8030020421	20	1000
8030020422	25	1000
8030020423	32	500

Side Clamp



SAP Number	Size(mm)	PCS/CTN
8030021542	16	
8030021543	20	
8030021544	25	
8030021545	32	
8030021546	40	
8030021547	50	

U Style Clamp



SAP Number	Size(mm)	PCS/CTN
8030021111	20	900
8030021112	25	

Plug



SAP Number	Size(mm)	PCS/CTN
8030020158	16	3500
8030020159	20	3000
8030020160	25	2000

U Style Clamp



SAP Number	Size(mm)	PCS/CTN
8030020593	16	2000
8030020594	20	1500
8030020595	25	1000
8030020596	32	500

All-purpose Plug



SAP Number	Size(mm)	PCS/CTN
8030021524	16	3500
8030021525	20	3000
8030021526	25	2000

Double U Clamp



SAP Number	Size(mm)	PCS/CTN
8030020736	16	
8030020737	20	
8030020750	25	
8030020751	32	
8030020752	40	
8030020753	50	